

# MAAX SUBMITTAL SPECIFICATIONS

## Infinity

**MODEL NUMBER 100055**

DIMENSIONS: 60" x 60" x 20" Acrylic



Project : .....  
Contractor : .....  
MAAX Representative : ..... Tel : .....  
Date : .....

**www.maax.com**

Vivez l'expérience  
**MAAX®**  
Enjoy the experience

### STANDARD FEATURES

- Extra-wide armrests, ergonomic backrests and integrated seat
- Cushion and two 12 in. grab bars <sup>14</sup> included
- Drop-in installation with center drain
- Cut-out template included
- Apron and tiling flange available

### OPTIONS

- Acrylic apron
- Thermo-Acoustic system
- Metal trim kit for Aerofeel
- Tiling flange
- Two 12-in. metal grab bars Chrome and Brushed Nickel
- Foam cushion

### UNIQUE FEATURES

- None

### SYSTEMS

- Aerofeel **DOOR SELECTION**  
 Hydromax with Backmax  
 Combined Aerofeel/Hydromax  
 Hydromax REST  
 O3 Ozonator  
 Chromotherapy  
Combine with  
MAAX's complete shower door offering visit [www.maax.com](http://www.maax.com)

### CERTIFICATIONS

Maax products adhere to one or more of the following certifications:



2018-01-08

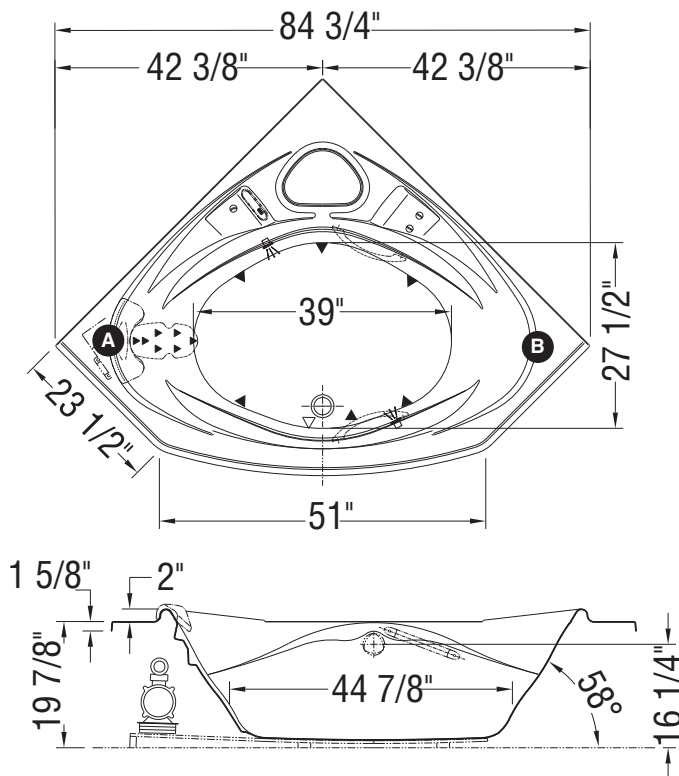
## MAAX SUBMITTAL SPECIFICATIONS

# Infinity

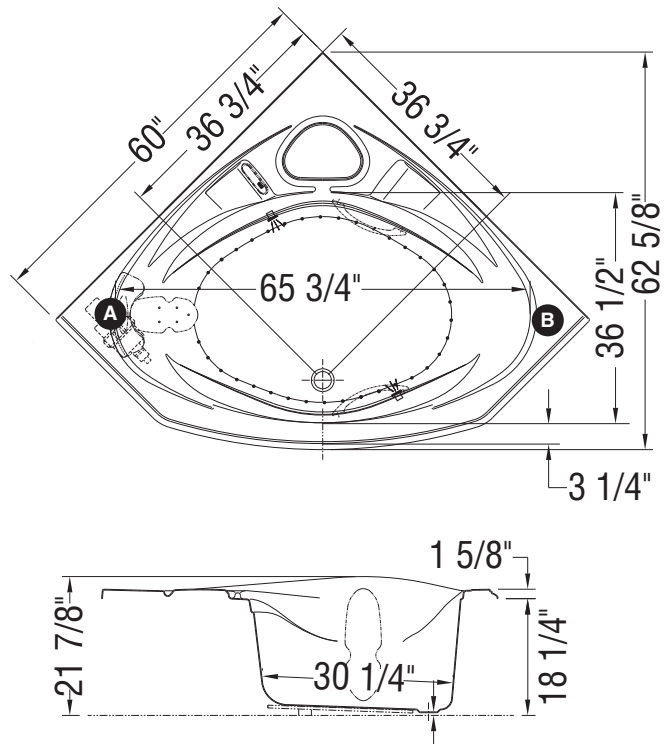
MODEL NUMBER 100055

## TECHNICAL DRAWINGS

WHIRLPOOL SYSTEM



AIR SYSTEM



**Note:** Air / whirlpool backjets on same side as blower / pump

- (A) : Specify blower and/or pump location when ordering
- (B) : Specify blower and/or pump location when ordering
- (▲) : Indicates whirlpool jets positioning
- (△) : Indicates suction positioning
- (•) : Indicates airjets positioning
- (—) : Indicates standard grab bar positioning
- (☼) : Indicates chromatherapy light positioning

Bathtub base includes anti-vibration Neutra-Phone leg supports (not shown).

**All dimensions are approximate. Structure measurements must be verified against the unit to ensure proper fit.**