

MAAX SUBMITTAL SPECIFICATIONS

Jupiter F32

MODEL NUMBER 101162

DIMENSIONS: 32" x 33" x 74" Fiberglass



STANDARD FEATURES

- 1-piece shower without roof cap
- Integrated shelves
- Center drain

OPTIONS

- PVC quick caulking shower drain with Chrome or Brushed Nickel grid
- ABS shower drain with Chrome stainless steel grid
- ABS shower drain with ABS grid

UNIQUE FEATURES

- None

SYSTEMS

- None

DOOR SELECTION

Combine with MAAX's complete shower door offering visit www.maax.com

Project :
Contractor :
MAAX Representative : Tel :
Date :

CERTIFICATIONS

Maax products adhere to one or more of the following certifications:

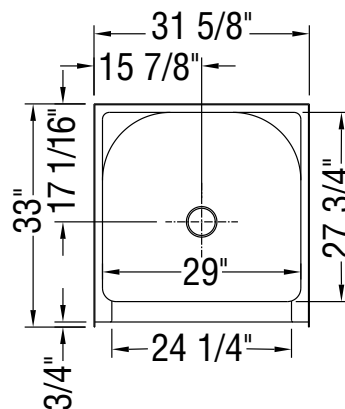
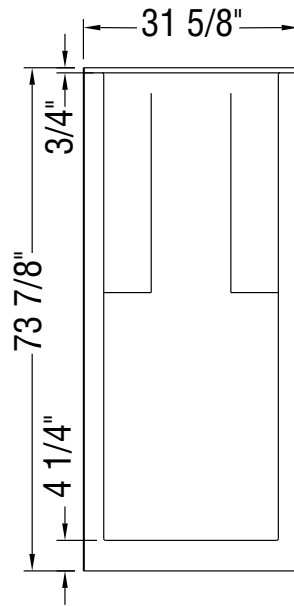


MAAX SUBMITTAL SPECIFICATIONS

Jupiter F32

MODEL NUMBER 101162

TECHNICAL DRAWINGS



All dimensions are approximate. Structure measurements must be verified against the unit to ensure proper fit.