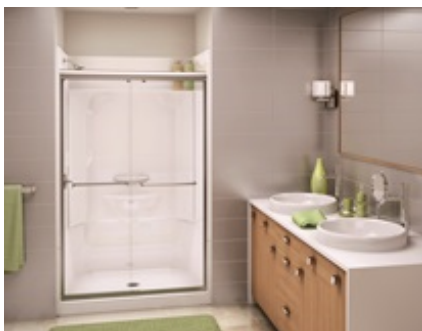


MAAX SUBMITTAL SPECIFICATIONS

KDS 3448

MODEL NUMBER 145030

DIMENSIONS: 48" x 34" x 80" Fiberglass



Project :
Contractor :
MAAX Representative : Tel :
Date :

www.maax.com

Vivez l'expérience
MAAX®
Enjoy the experience

STANDARD FEATURES

- Product available with or without Above-the-Floor Rough
- 4-piece shower with low threshold base
- Large top corner shelves, convenient footrests and acrylic handle
- Right seat, left seat or no seat configuration
- Unique feature: pin system for easy front installation
- All grab bars can support up to 300 lbs

OPTIONS

- 18" Modern straight grab bar
- 24 in. Modern vertical straight grab bar on side wall
- Wall reinforcement (one wall)
- One 12-in. handle with metallic finish

UNIQUE FEATURES

- PIN system

SYSTEMS

- None

DOOR SELECTION

Combine with MAAX's complete shower door offering visit www.maax.com

CERTIFICATIONS

Maax products adhere to one or more of the following certifications:



2018-01-08

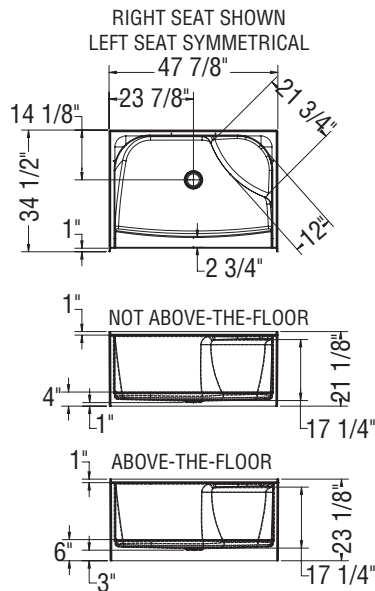
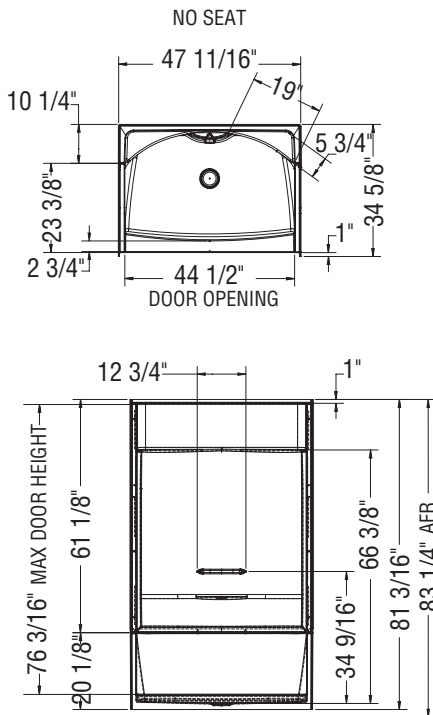
MAAX SUBMITTAL SPECIFICATIONS

KDS 3448

MODEL NUMBER 145030

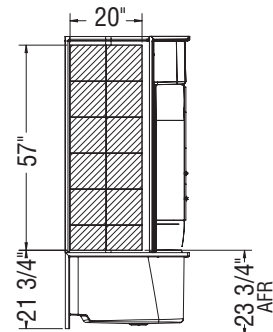
TECHNICAL DRAWINGS

STANDARD

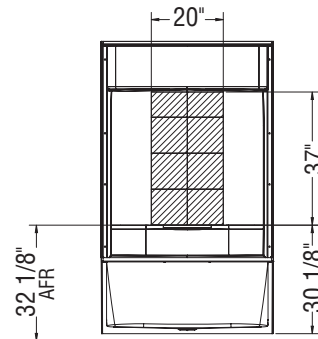


REINFORCEMENT BACKING

OPTION 20198 SHOWN
 OPTION 20197 SYMMETRICAL

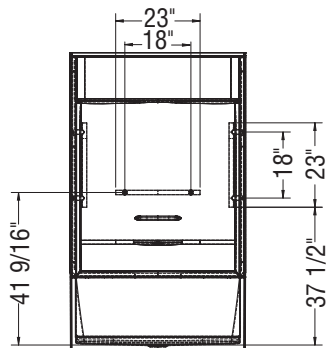


OPTION 20199

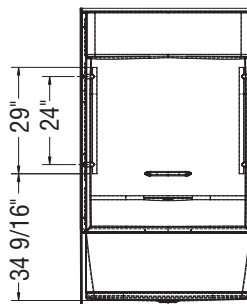


GRAB BARS

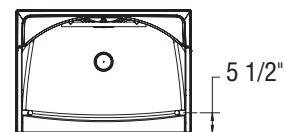
OPTION 20203



OPTION 20204



OPTION
 20203-20204



All dimensions are approximate. Structure measurements must be verified against the unit to ensure proper fit.
 *Dimensions indicated on product pages exclude tiling flanges.