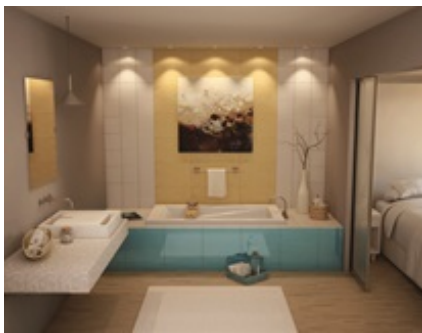


# MAAX SUBMITTAL SPECIFICATIONS

## Loft 6032

MODEL NUMBER 105460

DIMENSIONS: 60" x 32" x 21" Acrylic



Project : .....  
Contractor : .....  
MAAX Representative : ..... Tel : .....  
Date : .....

[www.maax.com](http://www.maax.com)

Vivez l'expérience  
**MAAX**<sup>®</sup>  
Enjoy the experience

### STANDARD FEATURES

- Unique feature: minimalist look with discreet armrests
- Textured bottom
- End drain
- Tiling flange available for alcove installation (order separately).
- Apron with magnetic access panel available
- Drop-in installation

### OPTIONS

- Microjet trim kit
- Thermax field-installed whirlpool heater
- One chromatherapy light
- Metal trim kit for Air Push Control
- Hydrosens trim kit
- Flexible main hose for Aerosens blower

### UNIQUE FEATURES

- None

### SYSTEMS

- Hydrosens<sup>®</sup> Backmax<sup>®</sup> DOOR
- Bubble Tub SELECTION
- Combined Hydrosens and Bubble Tub
- MicrojetsCombine with MAAX's complete shower door offering visit [www.maax.com](http://www.maax.com)

### CERTIFICATIONS

Maax products adhere to one or more of the following certifications:



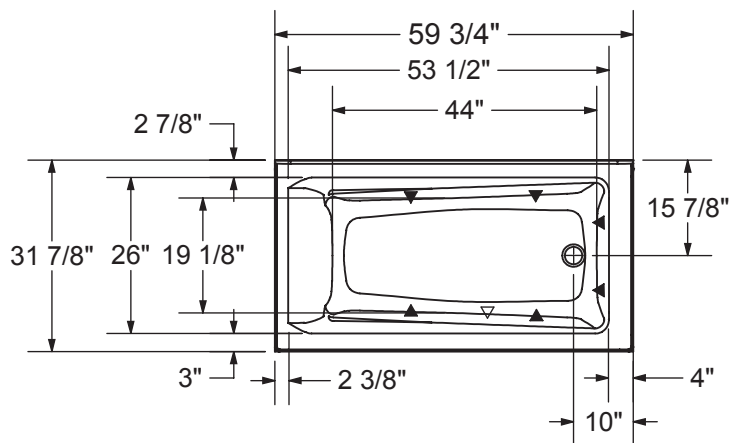
2018-01-08

## MAAX SUBMITTAL SPECIFICATIONS

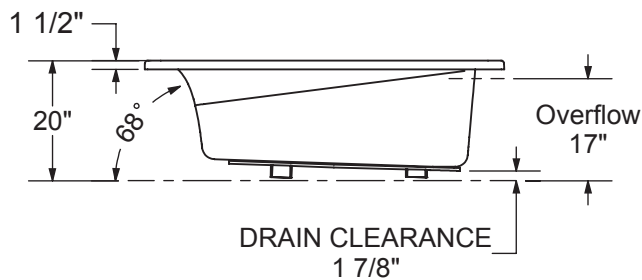
# Loft 6032

MODEL NUMBER 105460

## TECHNICAL DRAWINGS



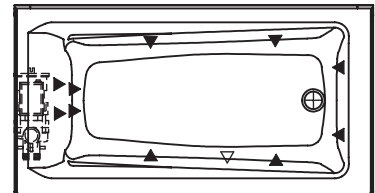
1" Single Integrated tiling  
 flange (not shown)



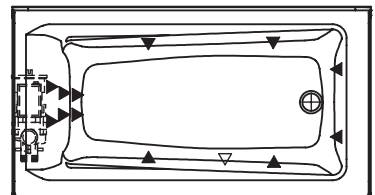
Wood support design may vary.  
 Single Integrated tiling flange: 1" height x 1/4" thickness (not shown)

All dimensions are approximate.  
 Structure measurement must be verified against the unit to ensure proper fit.

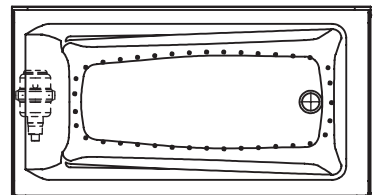
MICROJETS  
 SYSTEM



HYDROSENS with  
 BACKMAX SYSTEM



AIR SYSTEM



- ( ▲ ) : Indicates whirlpool jets positioning
- ( ▼ ) : Indicates suction positioning
- ( ● ) : Indicates airjets positioning