

MAAX SUBMITTAL SPECIFICATIONS

Lounge

MODEL NUMBER 105798

DIMENSIONS: 64" x 34" x 22" Acrylic



Project :

Contractor :

MAAX Representative :

Date :

Tel :

www.maax.com

Vivez l'expérience
MAAX[®]
Enjoy the experience

STANDARD FEATURES

- 2 piece – Transports and installs easily
- Bathtub apron available in 3 colors: Aqua, Platinum Grey, and Ruby
- 4-adjustable leveling legs – Adjusts and levels for ideal installation
- Faucet installation can be deck-mounted or floor-mounted
- Unique feature: maximized bathing well with comfortable backrest
- Above-the-Floor Rough (AFR) and F² Drain compatible

OPTIONS

- Apron only as a replacement part for your Lounge bathtub
- Cable-operated waste and overflow
- Foam pillow with 2 suction pads
- Waste and overflow

UNIQUE FEATURES

- Above-the-Floor Rough (AFR)
- 1 Tub - 2 Pieces
- Compatible with F2 Drain

SYSTEMS

- None

\$BUILDERSPECDOORSELECTIONTITLE

\$BuilderSpecDoorSelectionDescript

CERTIFICATIONS

Maax products adhere to one or more of the following certifications:



2018-01-08

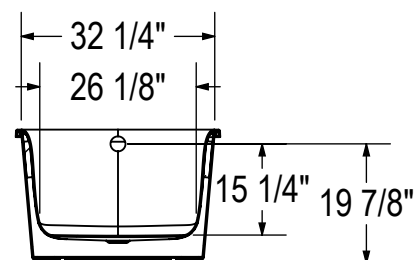
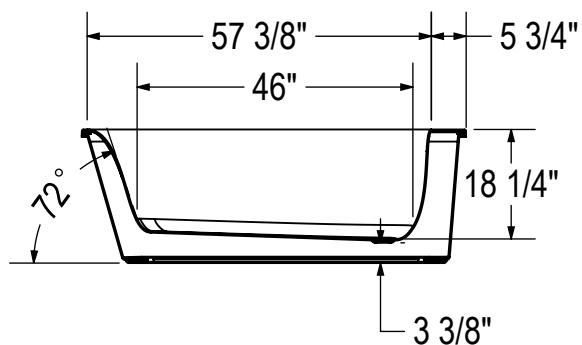
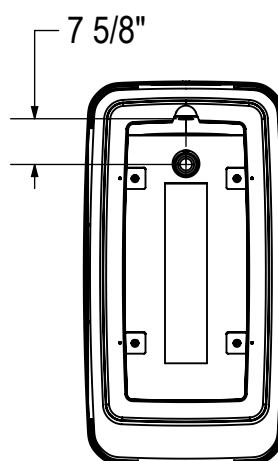
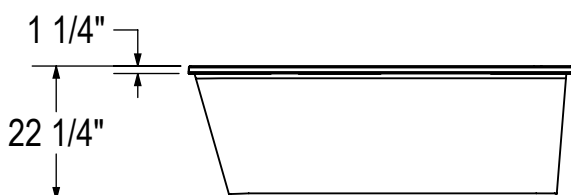
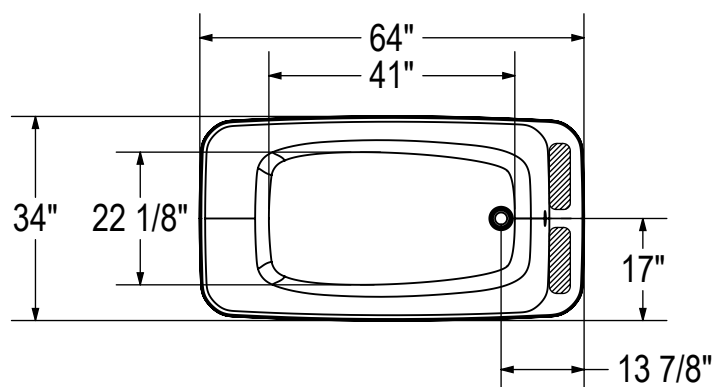
MAAX SUBMITTAL SPECIFICATIONS

Vivez l'expérience
MAAX[®]
Enjoy the experience

Lounge

MODEL NUMBER 105798

TECHNICAL DRAWINGS



(): Recommended faucet area 2 sections of 12" (L) x 3 1/2" (W).

All dimensions are approximate. Structure measurements must be verified against the unit to ensure proper fit.

2018-01-08