

MAAX SUBMITTAL SPECIFICATIONS

Magnolia III

MODEL NUMBER 300011

DIMENSIONS: 38" x 38" x 78" Acrylic/ABS



Project :
Contractor :
MAAX Representative : Tel :
Date :

www.maax.com

Vivez l'expérience
MAAX®
Enjoy the experience

STANDARD FEATURES

- 38" x 38" neo-round frameless kit
- Low 3" threshold base allowing a safe and easy access
- Central opening conveniently fits many bathroom designs
- Magnetic closure for increased watertightness
- Optional acrylic wall set available for your convenience (sold separately)

OPTIONS

- 3-piece acrylic wall set for shower kit
- Glass shelf
- Recessed acrylic storage module without door

UNIQUE FEATURES

- None

SYSTEMS

- None

DOOR SELECTION

Combine with MAAX's complete shower door offering visit www.maax.com

CERTIFICATIONS

Maax products adhere to one or more of the following certifications:



2018-01-08

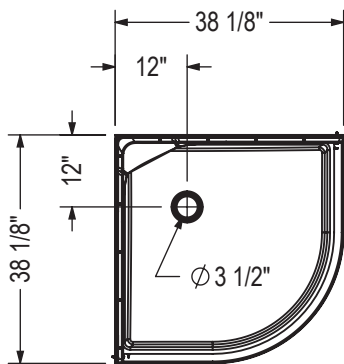
MAAX SUBMITTAL SPECIFICATIONS

Magnolia III

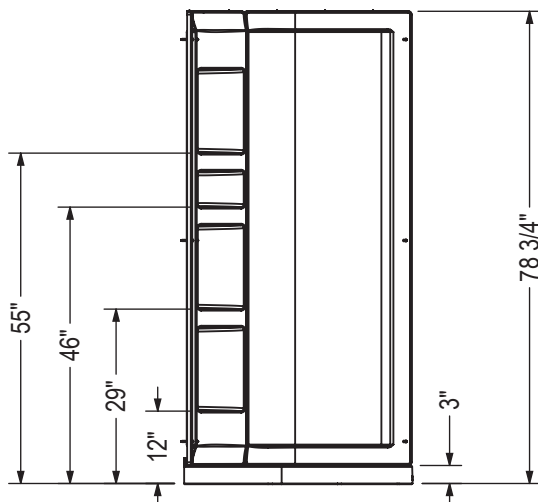
MODEL NUMBER 300011

TECHNICAL DRAWINGS

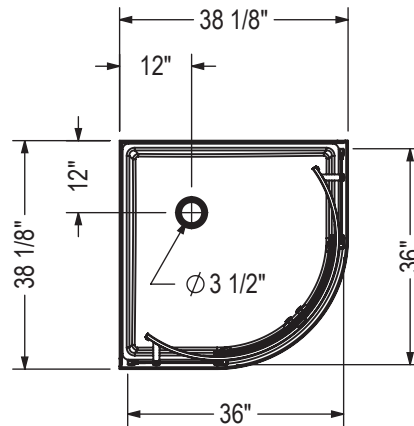
STANDARD



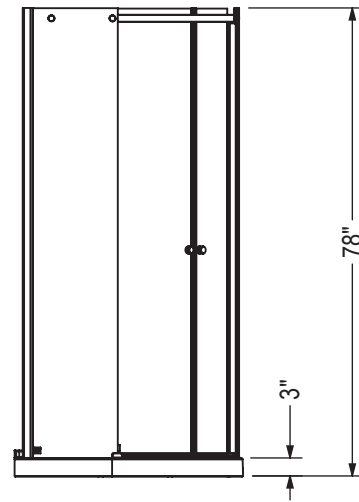
- Central opening
- Door opening : 22"
- Wall jamb adjustment : 3/4"



WITH ACRYLIC WALLS - WITHOUT DOOR



- Central opening
- Door opening : 22"
- Wall jamb adjustment : 3/4"



WITHOUT ACRYLIC WALLS - WITH DOOR

All dimensions are approximate. Structure measurements must be verified against the unit to ensure proper fit.