

MAAX SUBMITTAL SPECIFICATIONS

Miles

MODEL NUMBER 105756

DIMENSIONS: 66" x 36" x 23" Acrylic



Project :
Contractor :
MAAX Representative : Tel :
Date :

www.maax.com

Vivez l'expérience
MAAX®
Enjoy the experience

STANDARD FEATURES

- Classic 2-piece rectangular freestanding, virtually seamless look
- Two deck widths for different styles of faucet
- Center drain and 4 adjustable leveling legs
- Above-the-Floor Rough (AFR) and F² Drain compatible
- Apron available in standard colors and 5 designer colors
- Air massage system available

OPTIONS

- Two chromotherapy lights
- Flexible main hose for electronic control air massage - kit 15-ft. extension
- Metal trim kit for Aerofeel
- Waste and overflow 33" flexible neck
- Apron only as a replacement part for your Miles bathtub
- Positioning template for Miles freestanding installation

UNIQUE FEATURES

- 1 Tub - 2 Pieces
- 4 Adjustable Leveling Legs
- Compatible with F2 Drain

SYSTEMS

Chromotherapy Aerofeel

CERTIFICATIONS

Maax products adhere to one or more of the following certifications:



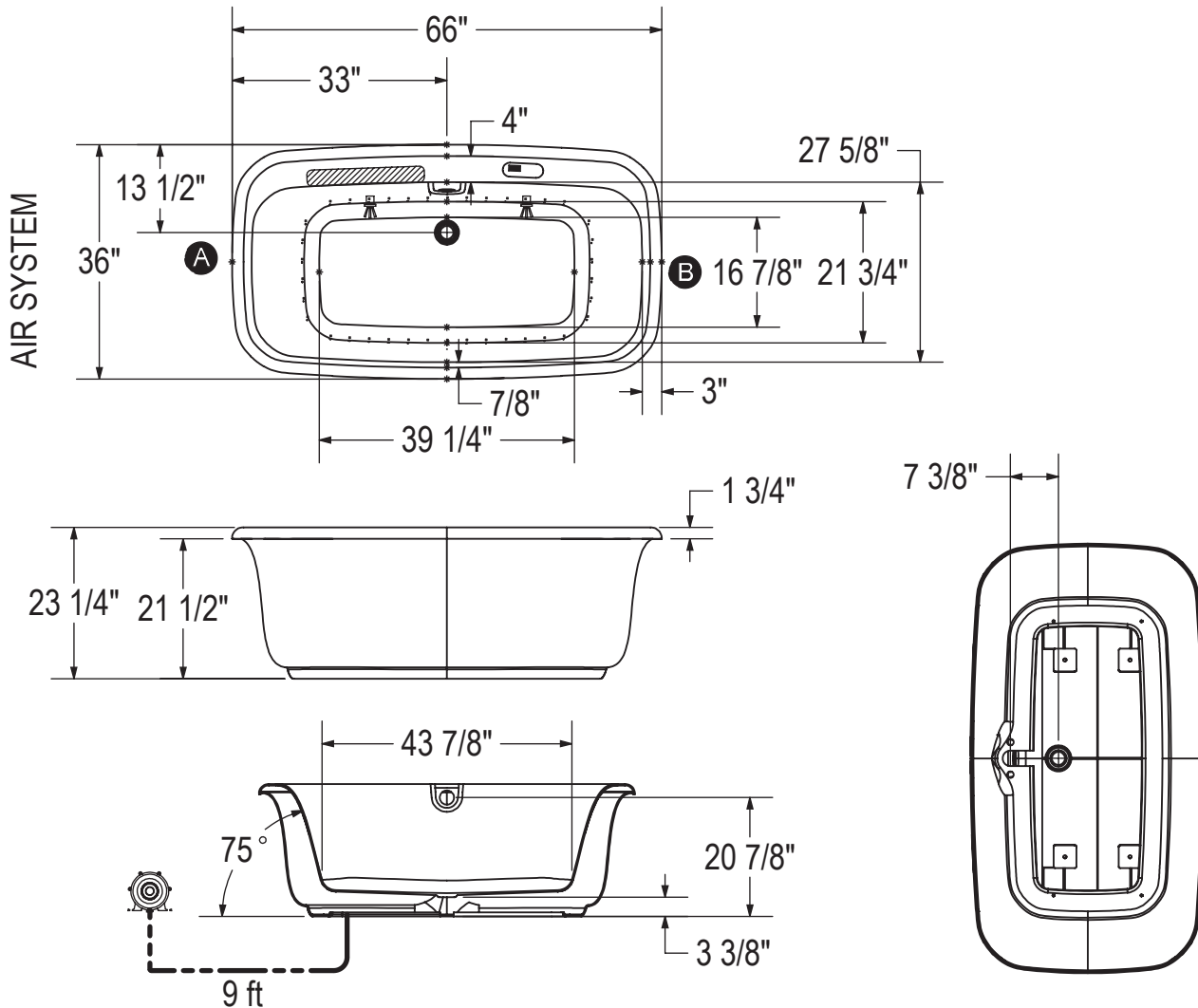
2018-01-08

MAAX SUBMITTAL SPECIFICATIONS

Miles

MODEL NUMBER 105756

TECHNICAL DRAWINGS




Ⓐ
 Ⓑ

: Specify remote blower location when ordering

() : Indicates chromatherapy light positioning

(•) : Indicates Aerofeel airjets positioning

() : Recommended faucet area 18" (L) x 2 1/2" (W).
 Could be longer without Chromatherapy option.

Blower must be installed at a distance.

All dimensions are approximate. Structure measurements must be verified against the unit to ensure proper fit.