

## MAAX SUBMITTAL SPECIFICATIONS

# ModulR Bathtub 6032 corner left (with armrests)

**MODEL NUMBER 410008**

DIMENSIONS: 60" x 32" x 23" Acrylic



Project : .....  
Contractor : .....  
MAAX Representative : ..... Tel : .....  
Date : .....

[www.maax.com](http://www.maax.com)

Vivez l'expérience  
**MAAX**<sup>®</sup>  
Enjoy the experience

### STANDARD FEATURES

- Two-piece bathtub with removable toe-kick
- Ample deck space for faucet installation
- Integrated tiling flange on the skirt and bathtub
- Lockable adjustable legs for ease of installation
- Above-the-Floor Rough (AFR)

### OPTIONS

- Flexible waste and overflow (included in product packaging when purchased)
- Flexible waste and overflow (included in product packaging when purchased)
- Brass waste and overflow for high-rise construction
- Brass waste and overflow for high-rise construction
- OPT 20251 - Access panel
- Foam pillow with 2 suction pads

### UNIQUE FEATURES

- Above-the-Floor Rough (AFR)
- 1 Tub - 2 Pieces

### SYSTEMS

- None

### DOOR SELECTION

Combine with MAAX's complete shower door offering visit [www.maax.com](http://www.maax.com)

### CERTIFICATIONS

Maax products adhere to one or more of the following certifications:



2018-01-08

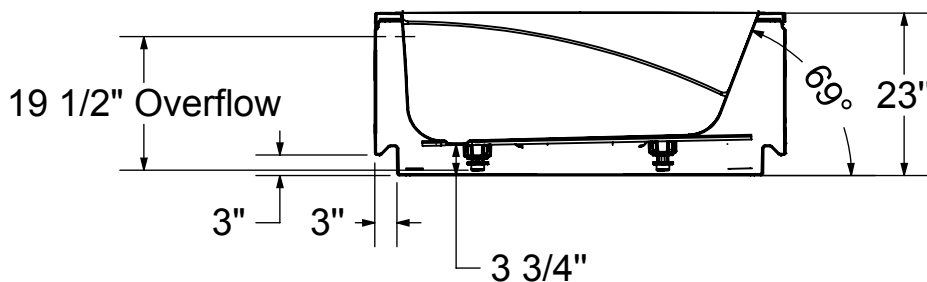
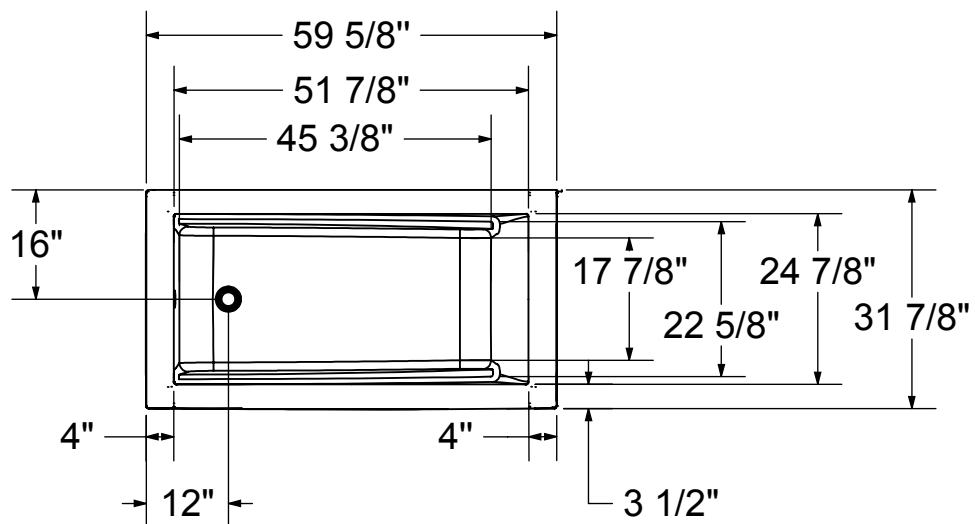
## MAAX SUBMITTAL SPECIFICATIONS

# ModuIR Bathtub 6032 corner left (with armrests)

MODEL NUMBER 410008

## TECHNICAL DRAWINGS

ModuIR BATHTUB: 60X32 WITH ARMREST



This technical drawing is universal for all ModuIR Tub configurations. (Left/Right Corner & Wall-mounted)

Integrated tiling flange: 1" height x 3/8" thick (not shown)  
 Tiling flange position is determined by chosen configuration.

All dimensions are approximate. Structure measurements must be verified against the unit to ensure proper fit.