

MAAX SUBMITTAL SPECIFICATIONS

ModulR Bathtub 6032 IF corner left (with armrests)

MODEL NUMBER 410027

DIMENSIONS: 60" x 32" x 23" Acrylic



Project :
Contractor :
MAAX Representative : Tel :
Date :

www.maax.com

Vivez l'expérience
MAAX[®]
Enjoy the experience

STANDARD FEATURES

- Two-piece rectangular bathtub with sleek and refined look
- 2 interior types available (with or without armrests)
- Integrated tiling flange (IF) for corner installation
- Ample deck space for faucet installation
- Right or left-hand drain, regardless of the installation type

OPTIONS

- Flexible waste and overflow (included in product packaging when purchased)
- Brass waste and overflow for high-rise construction
- Foam pillow with 2 suction pads
- Glass shelf

UNIQUE FEATURES

- Above-the-Floor Rough (AFR)
- 1 Tub - 2 Pieces

SYSTEMS

- None

DOOR SELECTION

Combine with MAAX's complete shower door offering visit www.maax.com

CERTIFICATIONS

Maax products adhere to one or more of the following certifications:



2018-01-08

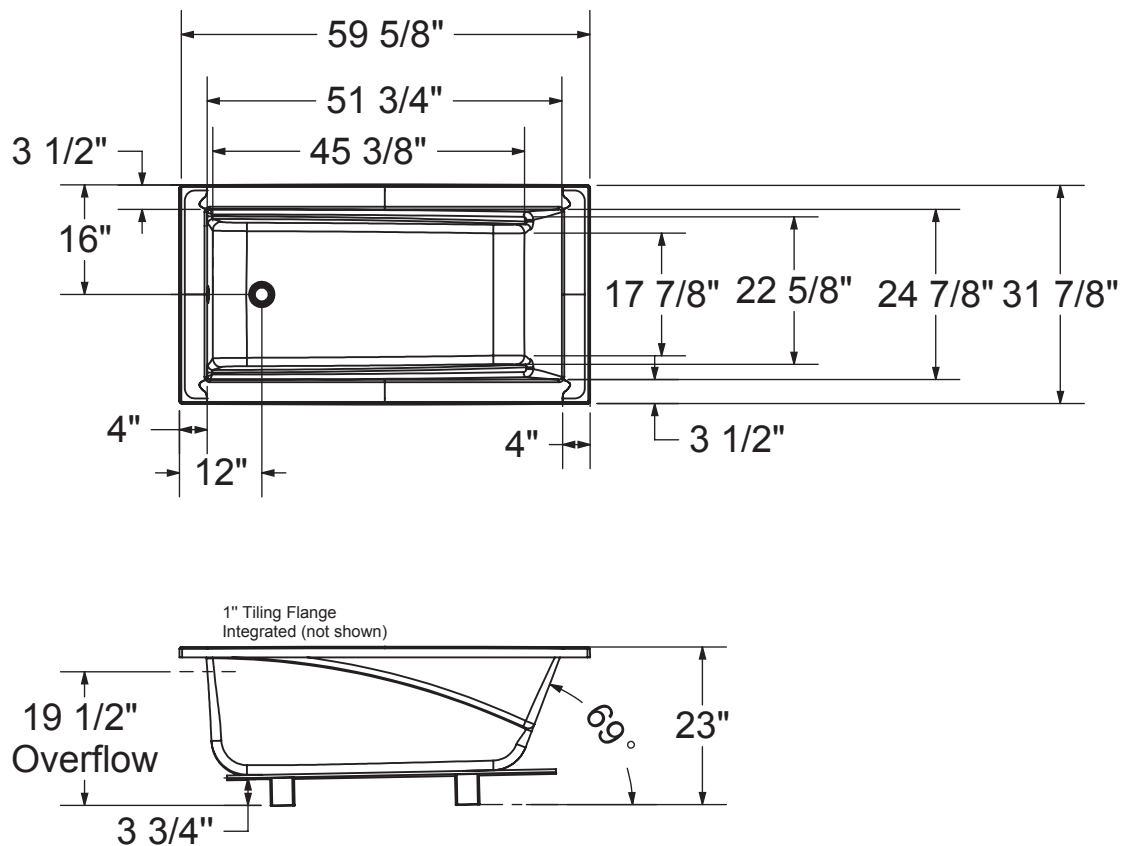
MAAX SUBMITTAL SPECIFICATIONS

ModuIR Bathtub 6032 IF corner left (with armrests)

MODEL NUMBER 410027

TECHNICAL DRAWINGS

ModuIR BATHTUB, Drop in, Alcove, IF Corner LH-RH : 60X32 WITH ARMREST



This technical drawing is universal for all ModuIR tubs configurations (Drop in, Alcove, IF Corner LH-RH)

Integrated tiling flange: 1" height x 3/8" thick (not shown)
 Tiling flange position is determined by chosen configuration.

All dimensions are approximate. Structure measurements must be verified against the unit to ensure proper fit.