

## MAAX SUBMITTAL SPECIFICATIONS

# ModulR 6032 IF (with armrests)

**MODEL NUMBER 410021**

DIMENSIONS: 60" x 32" x 23" Acrylic



Vivez l'expérience

**MAAX®**

Enjoy the experience

### STANDARD FEATURES

- Two-piece rectangular bathtub with sleek and refined look
- 2 interior types available (with or without armrests)
- Drop-in or alcove installation with integrated tiling flange (IF)
- Ample deck space for faucet installation
- Above-the-floor Rough (AFR)
- Optional apron with integrated toe-kick for alcove installation only

### OPTIONS

- Flexible waste and overflow (included in product packaging when purchased)
- Brass waste and overflow for high-rise construction
- Foam pillow with 2 suction pads
- Glass shelf

### UNIQUE FEATURES

- None

### SYSTEMS

- None

### DOOR SELECTION

Combine with MAAX's complete shower door offering visit [www.maax.com](http://www.maax.com)

### CERTIFICATIONS

Maax products adhere to one or more of the following certifications:



Project : .....

Contractor : .....

MAAX Representative : ..... Tel : .....

Date : .....

[www.maax.com](http://www.maax.com)

2018-01-08

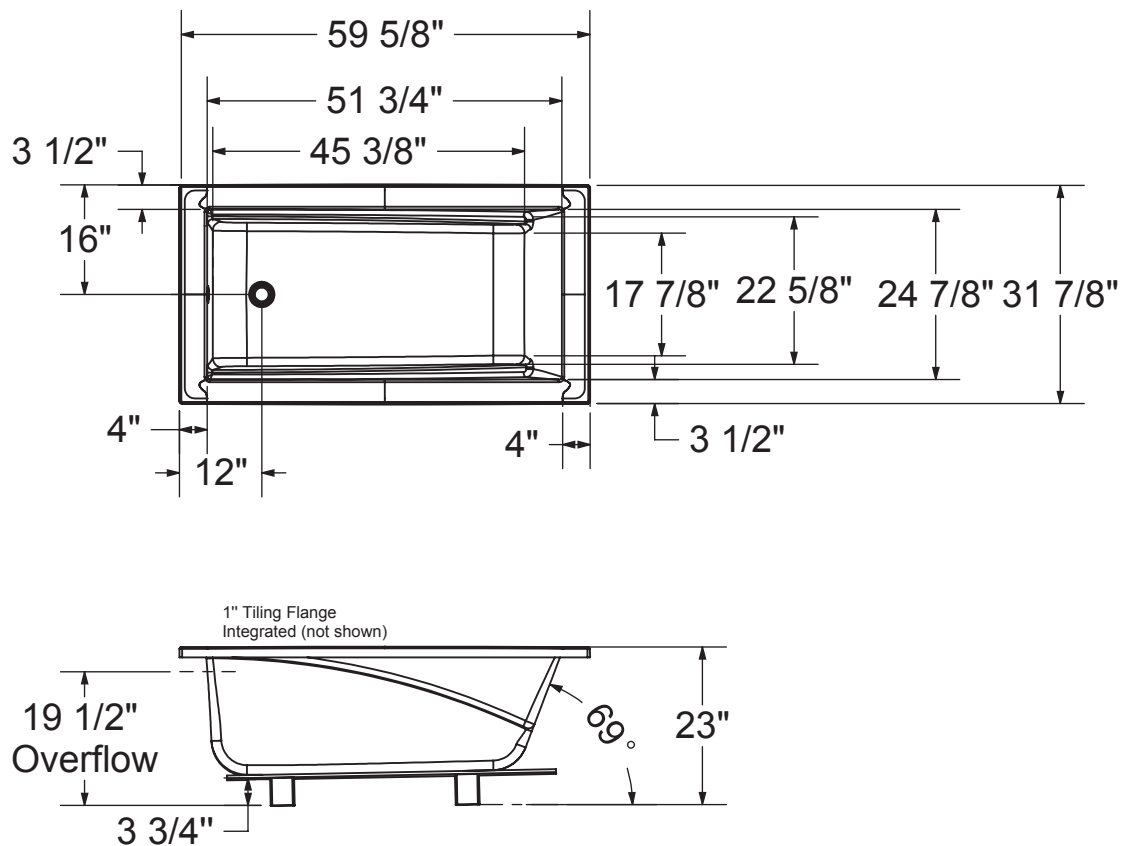
## MAAX SUBMITTAL SPECIFICATIONS

# ModuIR 6032 IF (with armrests)

MODEL NUMBER 410021

## TECHNICAL DRAWINGS

ModuIR BATHTUB, Drop in, Alcove, IF Corner LH-RH : 60X32 WITH ARMREST



This technical drawing is universal for all ModuIR tubs configurations (Drop in, Alcove, IF Corner LH-RH)

Integrated tiling flange: 1" height x 3/8" thick (not shown)  
 Tiling flange position is determined by chosen configuration.

All dimensions are approximate. Structure measurements must be verified against the unit to ensure proper fit.