

MAAX SUBMITTAL SPECIFICATIONS

MODULR BATHTUB 6032 WALL-MOUNTED (WITH ARMRESTS)

MODEL NUMBER 410009

DIMENSIONS: 60" x 32" x 23" Acrylic



Project :
Contractor :
MAAX Representative : Tel :
Date :

www.maax.com

Vivez l'expérience
MAAX®
Enjoy the experience

STANDARD FEATURES

- Two-piece bathtub with removable toe-kick
- Ample deck space for faucet installation
- Integrated tiling flange on the skirt and bathtub
- Lockable adjustable legs for ease of installation
- 3 in. Above-the-Floor Rough (AFR)

OPTIONS

- Flexible waste and overflow (included in product packaging when purchased)
- Brass waste and overflow for high-rise construction
- OPT 20251 - Access panel
- Glass shelf
- Foam pillow with 2 suction pads

UNIQUE FEATURES

- Above-the-Floor Rough (AFR)
- 1 Tub - 2 Pieces

SYSTEMS

- None

DOOR SELECTION

Combine with MAAX's complete shower door offering visit www.maax.com

CERTIFICATIONS

Maax products adhere to one or more of the following certifications:



2018-01-08

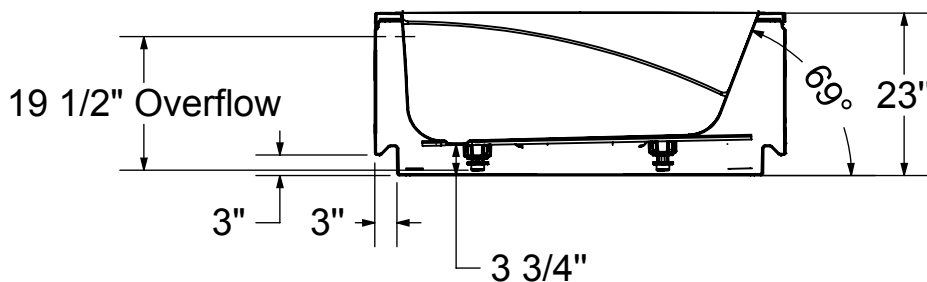
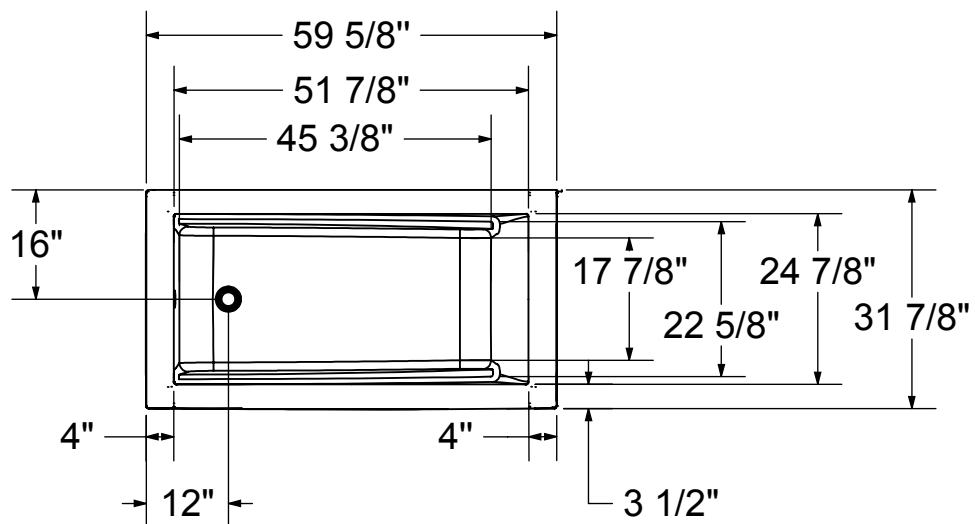
MAAX SUBMITTAL SPECIFICATIONS

MODULR BATHTUB 6032 WALL-MOUNTED (WITH ARMRESTS)

MODEL NUMBER 410009

TECHNICAL DRAWINGS

ModulR BATHTUB: 60X32 WITH ARMREST



This technical drawing is universal for all ModulR Tub configurations. (Left/Right Corner & Wall-mounted)

Integrated tiling flange: 1" height x 3/8" thick (not shown)
Tiling flange position is determined by chosen configuration.

All dimensions are approximate. Structure measurements must be verified against the unit to ensure proper fit.