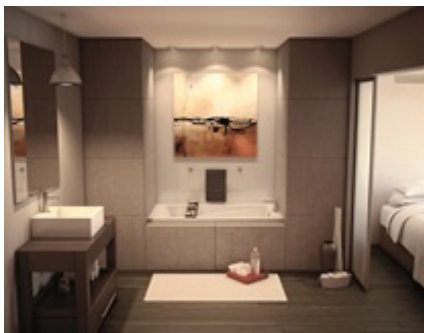


MAAX SUBMITTAL SPECIFICATIONS

New Town 6032 (IF)

MODEL NUMBER 105467

DIMENSIONS: 60" x 32" x 20" Acrylic



Project :
Contractor :
MAAX Representative : Tel :
Date :

www.maax.com

Vivez l'expérience
MAAX[®]
Enjoy the experience

STANDARD FEATURES

- Unique feature: minimalist look with discreet armrests
- 3" Above-the-Floor Rough: pipe directly under the bathtub without relocating the existing drain
- Textured bottom
- Right or left drain
- Alcove installation, Integrated tiling flange

OPTIONS

- One chromatherapy light
- Water heater assembly (factory installed)
- Microjet trim kit
- Hydrosens trim kit
- Metal trim kit for Air Push Control
- Cable-operated waste and overflow

UNIQUE FEATURES

- None

SYSTEMS

Microjets Hydrosens **DOOR**
Backmax Aerোসens
Combined
Aerosens/Hydrosens

SELECTION

Combine with MAAX's complete shower door offering visit www.maax.com

CERTIFICATIONS

Maax products adhere to one or more of the following certifications:



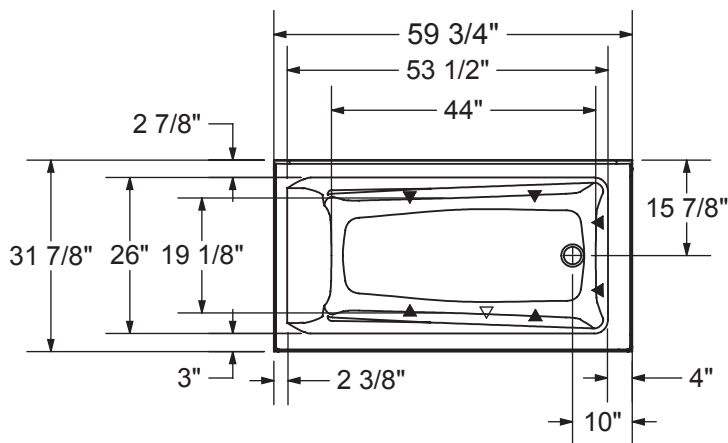
2018-01-08

MAAX SUBMITTAL SPECIFICATIONS

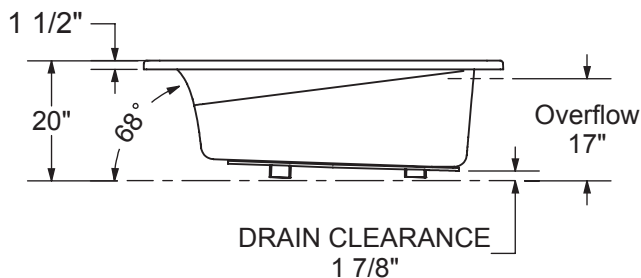
New Town 6032 (IF)

MODEL NUMBER 105467

TECHNICAL DRAWINGS



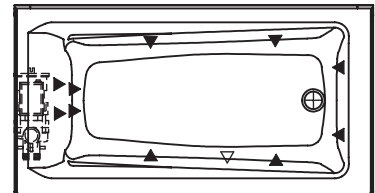
1" Single Integrated tiling
 flange (not shown)



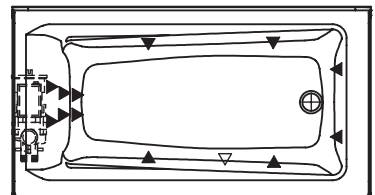
Wood support design may vary.
 Single Integrated tiling flange: 1" height x 1/4" thickness (not shown)

All dimensions are approximate.
 Structure measurement must be verified against the unit to ensure proper fit.

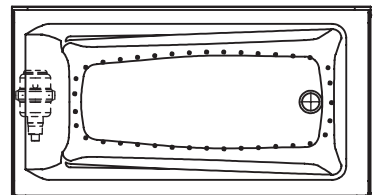
MICROJETS
 SYSTEM



HYDROSENS with
 BACKMAX SYSTEM



AIR SYSTEM



- (▲) : Indicates whirlpool jets positioning
- (△) : Indicates suction positioning
- (●) : Indicates airjets positioning