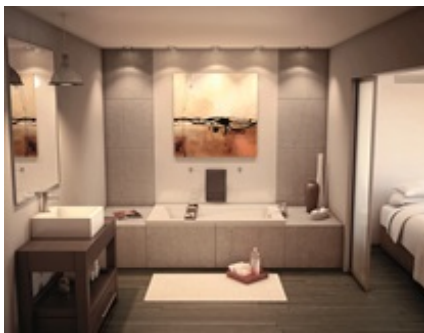


## MAAX SUBMITTAL SPECIFICATIONS

# New Town 6032

**MODEL NUMBER 105459**

DIMENSIONS: 60" x 32" x 20" Acrylic



Project : .....  
Contractor : .....  
MAAX Representative : ..... Tel : .....  
Date : .....

[www.maax.com](http://www.maax.com)

Vivez l'expérience  
**MAAX**<sup>®</sup>  
Enjoy the experience

### STANDARD FEATURES

- Unique feature: minimalist look with discreet armrests
- Textured bottom
- End drain
- Drop-in or alcove installation with integrated tiling flange

### OPTIONS

- One chromatherapy light
- Water heater assembly (factory installed)
- Microjet trim kit
- Hydrosens trim kit
- Metal trim kit for Air Push Control
- Cable-operated waste and overflow

### UNIQUE FEATURES

- None

### SYSTEMS

Microjets Hydrosens **DOOR**  
Aerosens **SELECTION**  
Combined  
Aerosens/Hydrosens  
BackmaxCombine with  
MAAX's complete  
shower door offering visit  
[www.maax.com](http://www.maax.com)

### CERTIFICATIONS

Maax products adhere to one or more of the following certifications:



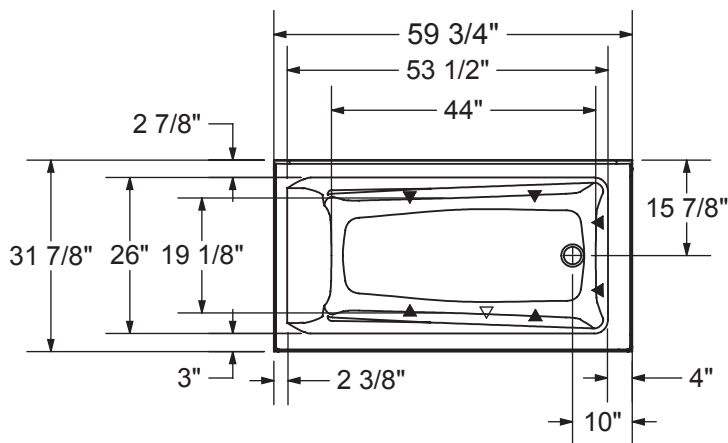
2018-01-08

## MAAX SUBMITTAL SPECIFICATIONS

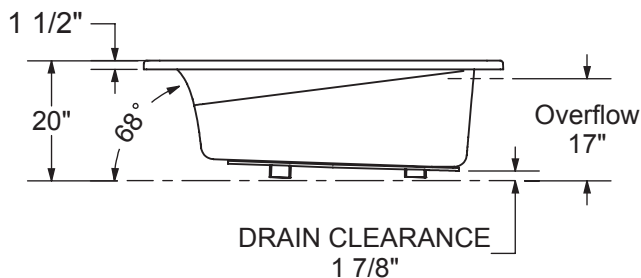
# New Town 6032

MODEL NUMBER 105459

## TECHNICAL DRAWINGS



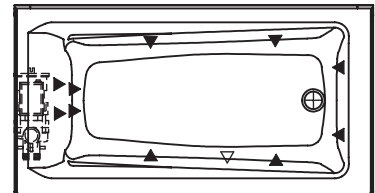
1" Single Integrated tiling  
 flange (not shown)



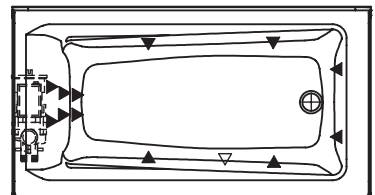
Wood support design may vary.  
 Single Integrated tiling flange: 1" height x 1/4" thickness (not shown)

All dimensions are approximate.  
 Structure measurement must be verified against the unit to ensure proper fit.

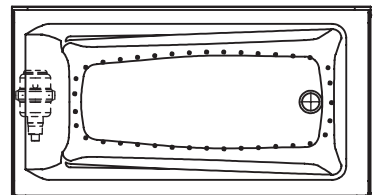
MICROJETS  
 SYSTEM



HYDROSENS with  
 BACKMAX SYSTEM



AIR SYSTEM



- ( ▲ ) : Indicates whirlpool jets positioning
- ( △ ) : Indicates suction positioning
- ( ● ) : Indicates airjets positioning