

MAAX SUBMITTAL SPECIFICATIONS

Nordica

MODEL NUMBER 102717

DIMENSIONS: 60" x 33" x 74" Fiberglass



Project :
Contractor :
MAAX Representative : Tel :
Date :

Vivez l'expérience
MAAX[®]
Enjoy the experience

STANDARD FEATURES

- Built-in shelves
- Soap dish
- Clear towel bar
- Textured bottom

OPTIONS

- Cable-operated waste and overflow
- Foam pillow with 2 suction pads
- Waste and overflow
- Waste and overflow
- Waste and overflow

UNIQUE FEATURES

- None

SYSTEMS

- None

DOOR SELECTION

Combine with MAAX's complete shower door offering visit www.maax.com

CERTIFICATIONS

Maax products adhere to one or more of the following certifications:



www.maax.com

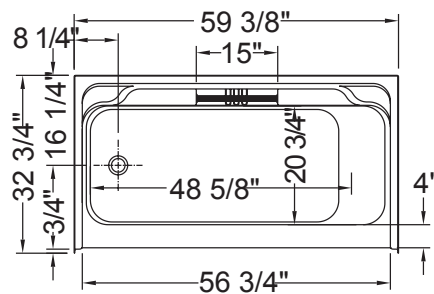
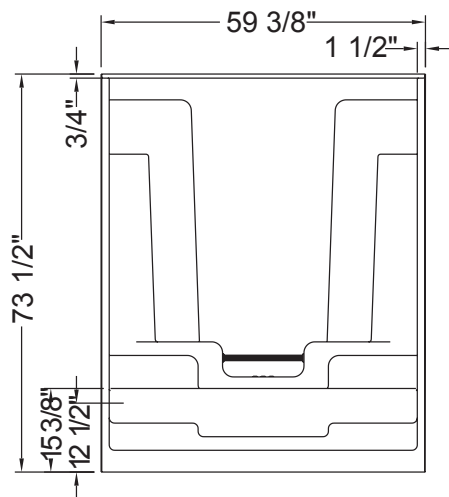
2018-01-08

MAAX SUBMITTAL SPECIFICATIONS

Nordica

MODEL NUMBER 102717

TECHNICAL DRAWINGS



All dimensions are approximate. Structure measurements must be verified against the unit to ensure proper fit.