

# MAAX SUBMITTAL SPECIFICATIONS

## Novello II

**MODEL NUMBER 102492**

DIMENSIONS: 37" x 37" x 78" Acrylic



Project : .....  
Contractor : .....  
MAAX Representative : ..... Tel : .....  
Date : .....

Vivez l'expérience  
**MAAX**<sup>®</sup>  
Enjoy the experience

### STANDARD FEATURES

- 1-piece neo-round corner shower with optional roof cap
- Integrated footrest, shelves and soap dish
- Optional roof cap light (recommended)

### OPTIONS

- ABS shower drain with Chrome stainless steel grid
- PVC quick caulking shower drain with Chrome or Brushed Nickel grid
- Roof cap

### UNIQUE FEATURES

- None

### SYSTEMS

- None

### DOOR SELECTION

Combine with MAAX's complete shower door offering visit [www.maax.com](http://www.maax.com)

### CERTIFICATIONS

Maax products adhere to one or more of the following certifications:



[www.maax.com](http://www.maax.com)

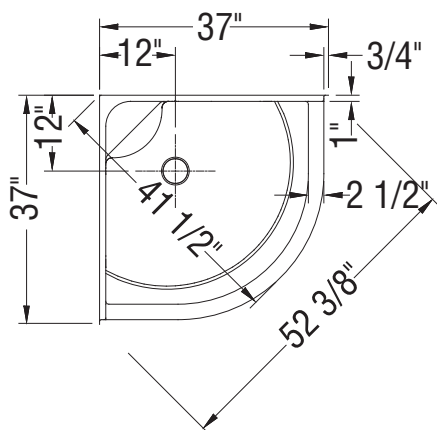
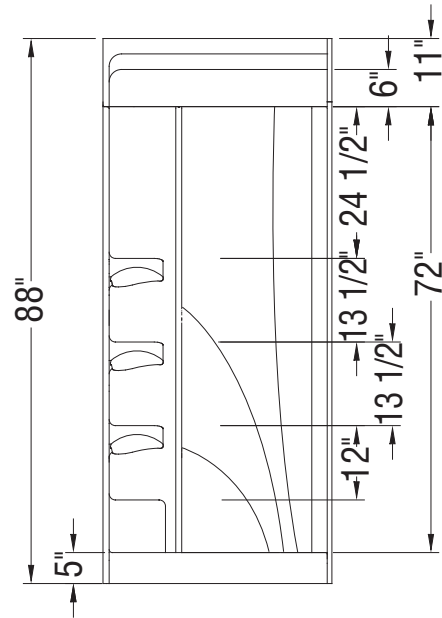
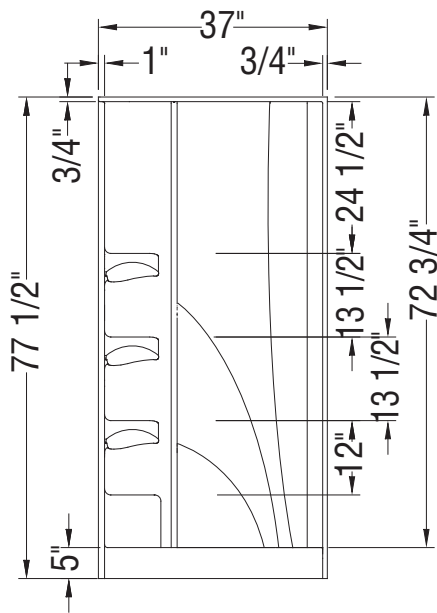
2018-01-08

## MAAX SUBMITTAL SPECIFICATIONS

# Novello II

MODEL NUMBER 102492

## TECHNICAL DRAWINGS



All dimensions are approximate. Structure measurements must be verified against the unit to ensure proper fit.