

## MAAX SUBMITTAL SPECIFICATIONS

# OPS-3636-RS - Base Model

**MODEL NUMBER 106064**

DIMENSIONS: 36" x 36" x 76 5/8" Fiberglass



Project : .....  
Contractor : .....  
MAAX Representative : ..... Tel : .....  
Date : .....

[www.maax.com](http://www.maax.com)

Vivez l'expérience  
**MAAX**<sup>®</sup>  
Enjoy the experience

### STANDARD FEATURES

- 1-piece transfer shower reinforced according to FHA accessibility requirements
- Configurable to be compliant with major accessibility codes when properly installed
- Center drain and textured bottom
- 3/4" reduced skirt and 1/2" high threshold

### OPTIONS

- Chrome recessed soap dish (drilled, not installed)
- Solid Brass drain with Chrome plated Stainless Steel grid
- 36" Chrome curtain rod
- 36" White vinyl shower curtain

### UNIQUE FEATURES

- None

### SYSTEMS

- None

### CERTIFICATIONS

Maax products adhere to one or more of the following certifications:



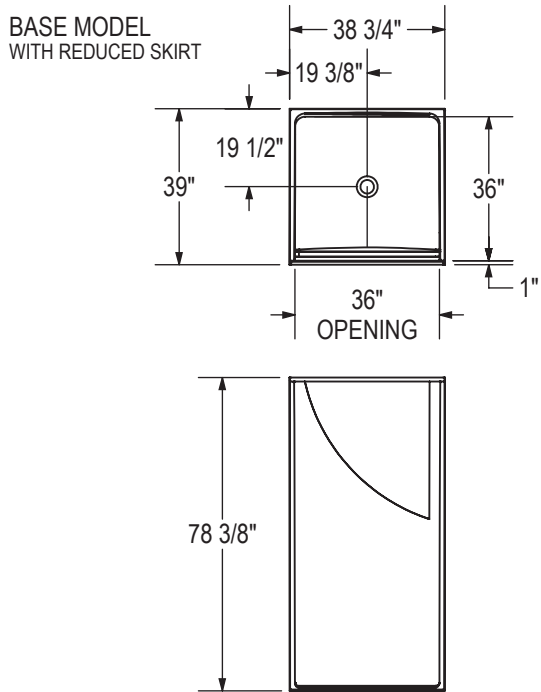
2018-01-08

## MAAX SUBMITTAL SPECIFICATIONS

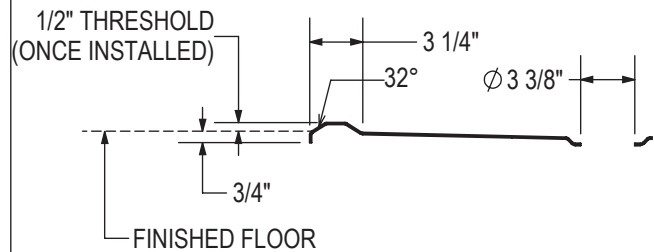
# OPS-3636-RS - Base Model

MODEL NUMBER 106064

## TECHNICAL DRAWINGS

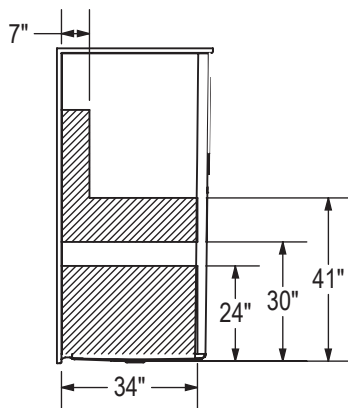


THRESHOLD DETAIL (REDUCED SKIRT)

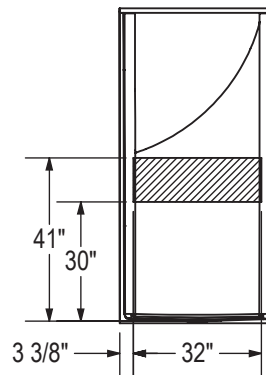


REINFORCEMENT BACKING

RIGHT WALL SHOWN  
LEFT WALL SYMMETRICAL



BACK WALL



All dimensions are approximate. Structure measurements must be verified against the unit to ensure proper fit.