

## MAAX SUBMITTAL SPECIFICATIONS

Vivez l'expérience

# MAAX®

Enjoy the experience

# OPS-4248-RS - Base Model

**MODEL NUMBER 106083**

DIMENSIONS: 42" x 48" x 76 1/2" Fiberglass



Project : .....  
Contractor : .....  
MAAX Representative : ..... Tel : .....  
Date : .....

### STANDARD FEATURES

- 1-piece shower reinforced to meet California Title 24 requirements
- Configurable to be fully compliant with California Title 24
- 3/4 in. reduced skirt and 1/2 in. exterior threshold
- Back center drain, textured bottom

### OPTIONS

- Chrome recessed soap dish (drilled, not installed)
- 42" chrome curtain rod
- Solid Brass drain with Chrome plated Stainless Steel grid
- 48" white vinyl shower curtain with stainless steel hooks

### UNIQUE FEATURES

- None

### SYSTEMS

- None

### CERTIFICATIONS

Maax products adhere to one or more of the following certifications:



[www.maax.com](http://www.maax.com)

2018-01-08

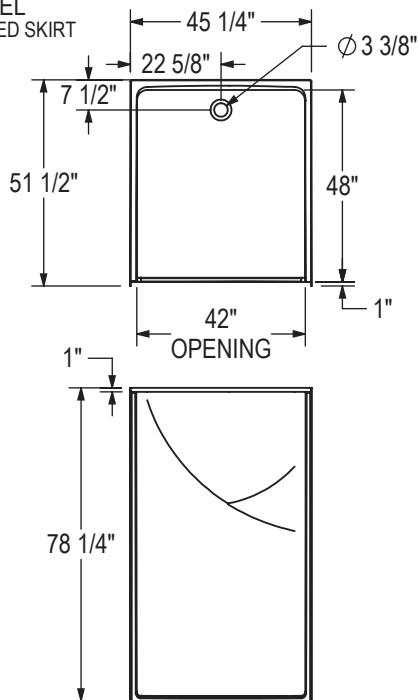
## MAAX SUBMITTAL SPECIFICATIONS

# OPS-4248-RS - Base Model

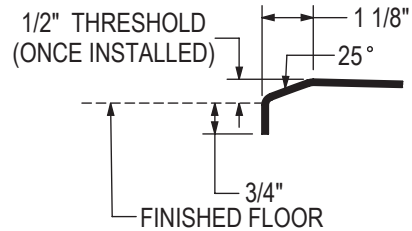
MODEL NUMBER 106083

## TECHNICAL DRAWINGS

BASE MODEL  
WITH REDUCED SKIRT

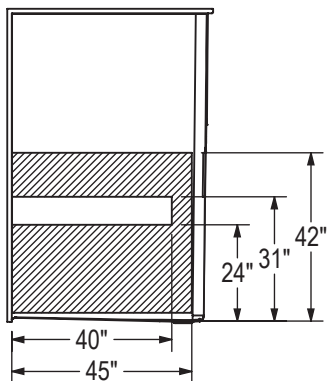


THRESHOLD DETAIL (REDUCED SKIRT)

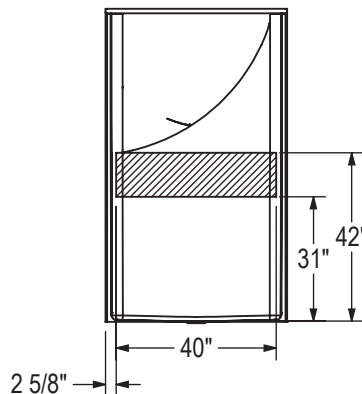


REINFORCEMENT BACKING

RIGHT WALL SHOWN  
LEFT WALL SYMMETRICAL



BACKWALL



All dimensions are approximate. Structure measurements must be verified against the unit to ensure proper fit.