

MAAX SUBMITTAL SPECIFICATIONS

OPS-4836G

MODEL NUMBER 106109

DIMENSIONS: 48" x 36" x 76 3/8" Gelcoat



Project :
Contractor :
MAAX Representative : Tel :
Date :

www.maax.com

Vivez l'expérience
MAAX®
Enjoy the experience

STANDARD FEATURES

- 1-piece shower reinforced for customized placement of grab bars and seat
- Optional grab bars, seat & soap dish
- Curtain rod, shower curtain, faucet kit and drain also available
- Center drain
- Textured bottom

OPTIONS

- 18" Modern straight grab bar
- Recessed soap dish (drilled, not installed)
- Pressure balance mixing valve, hand held shower, 24 in slide bar and 60 in hose
- 48" curtain rod
- 24" Modern straight grab bar
- Solid Brass drain with Chrome plated Stainless Steel grid

UNIQUE FEATURES

- None

SYSTEMS

- None

DOOR SELECTION

CERTIFICATIONS

Maax products adhere to one or more of the following certifications:



2018-01-08

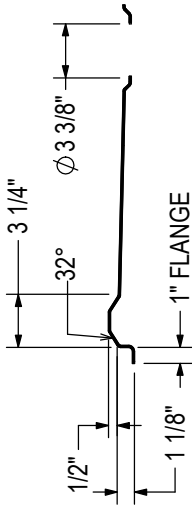
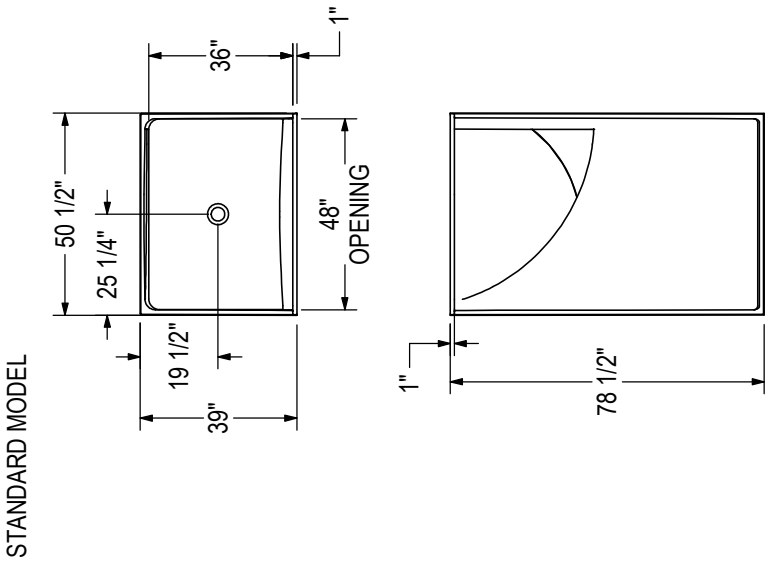
MAAX SUBMITTAL SPECIFICATIONS

OPS-4836G

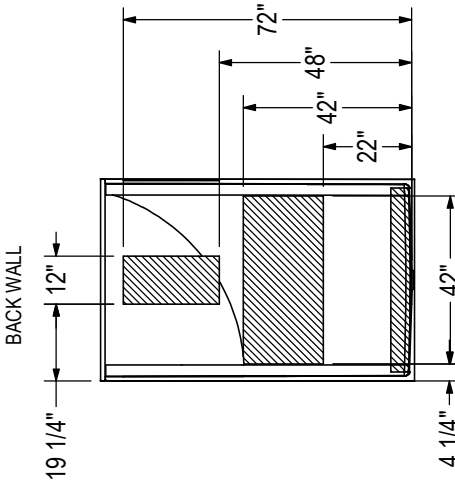
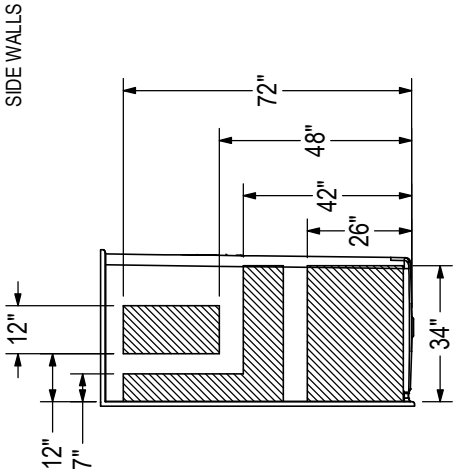
MODEL NUMBER 106109

TECHNICAL DRAWINGS

THRESHOLD DETAIL



REINFORCEMENT BACKING



All dimensions are approximate. Structure measurements must be verified against the unit to ensure proper fit.