

## MAAX SUBMITTAL SPECIFICATIONS

# OPS-6030 - Base Model

### MODEL NUMBER 106034

DIMENSIONS: 60" x 30 1/4" x 76 5/8" Fiberglass



### STANDARD FEATURES

- 1-piece roll-in shower reinforced according to FHA accessibility requirements
- Configurable to be compliant with major accessibility codes when properly installed
- Center drain, textured bottom
- 1 1/8" skirt and 1/2" high threshold

### OPTIONS

- Chrome recessed soap dish (drilled, not installed)
- 60" Curtain rod
- Solid Brass drain with Chrome plated Stainless Steel grid
- 72 in. White vinyl shower curtain with Stainless Steel hooks

### UNIQUE FEATURES

- None

### SYSTEMS

- None

### CERTIFICATIONS

Maax products adhere to one or more of the following certifications:



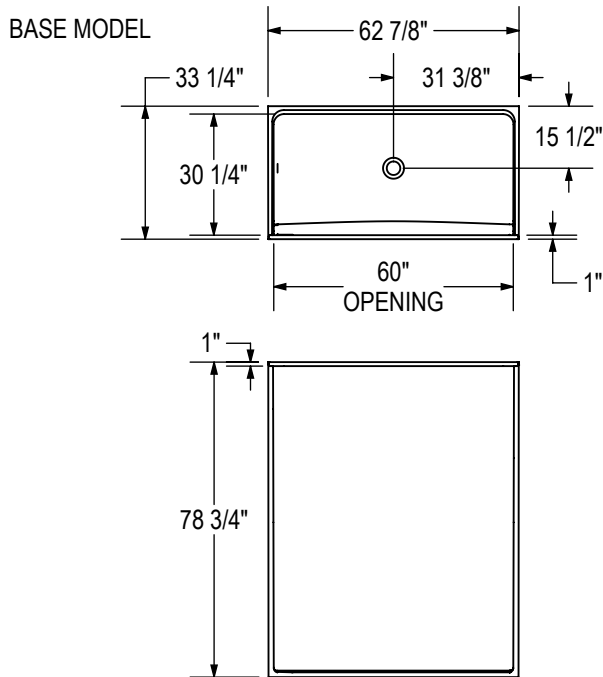
Project : .....  
Contractor : .....  
MAAX Representative : ..... Tel : .....  
Date : .....

## MAAX SUBMITTAL SPECIFICATIONS

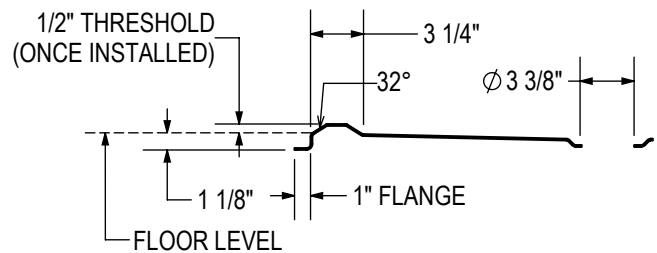
# OPS-6030 - Base Model

MODEL NUMBER 106034

## TECHNICAL DRAWINGS

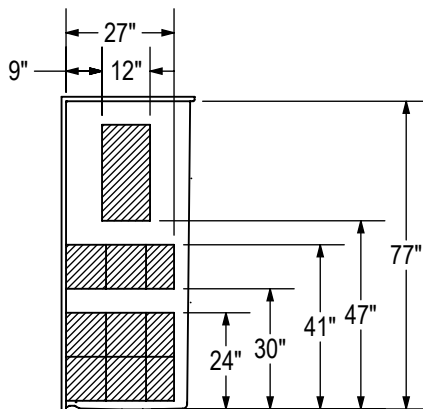


THRESHOLD DETAIL

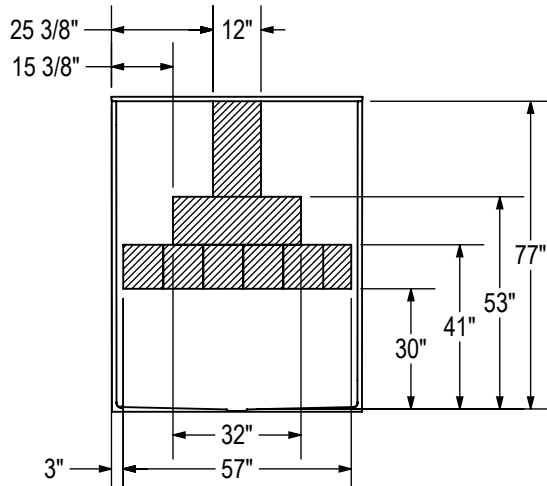


REINFORCEMENT BACKING

RIGHT WALL SHOWN  
 LEFT WALL SYMMETRICAL



BACK WALL



All dimensions are approximate. Structure measurements must be verified against the unit to ensure proper fit.