

## MAAX SUBMITTAL SPECIFICATIONS

# OPS-6036-RS - Base Model

**MODEL NUMBER 106077**

DIMENSIONS: 60" x 36" x 76 5/8" Fiberglass



Project : .....  
Contractor : .....  
MAAX Representative : ..... Tel : .....  
Date : .....

**www.maax.com**

Vivez l'expérience  
**MAAX**<sup>®</sup>  
Enjoy the experience

### STANDARD FEATURES

- 1-piece roll-in shower reinforced according to FHA accessibility requirements
- Configurable to be compliant with major accessibility codes when properly installed
- Center drain, Textured bottom
- 3/4" reduced skirt and 1/2" high threshold
- Base model

### OPTIONS

- Chrome recessed soap dish (drilled, not installed)
- 60" Curtain rod
- Solid Brass drain with Chrome plated Stainless Steel grid
- 72 in. White vinyl shower curtain with Stainless Steel hooks

### UNIQUE FEATURES

- None

### SYSTEMS

- None

### CERTIFICATIONS

Maax products adhere to one or more of the following certifications:



2018-01-08

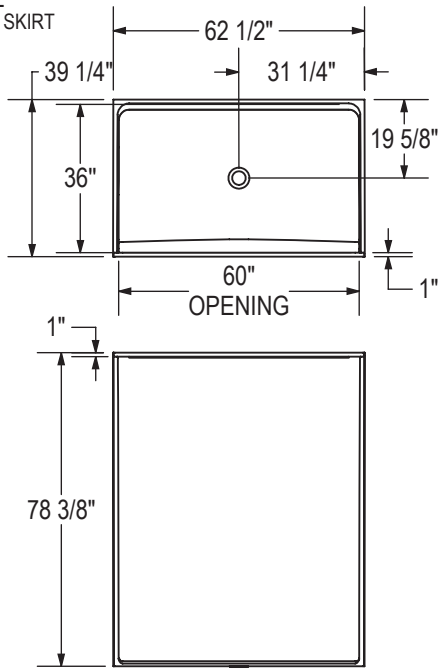
## MAAX SUBMITTAL SPECIFICATIONS

# OPS-6036-RS - Base Model

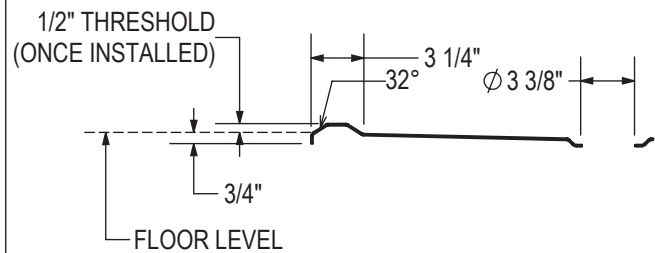
MODEL NUMBER 106077

## TECHNICAL DRAWINGS

BASE MODEL  
WITH REDUCED SKIRT



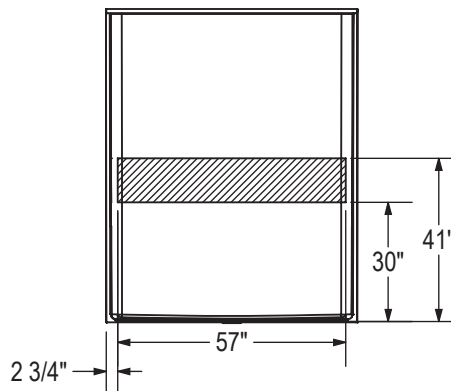
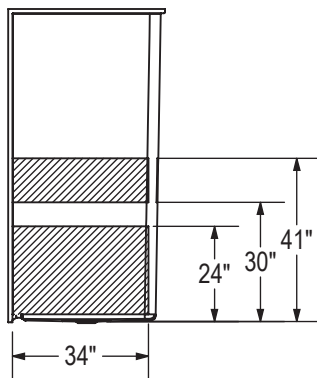
THRESHOLD DETAIL (REDUCED SKIRT)



REINFORCEMENT BACKING

RIGHT WALL SHOWN  
LEFT WALL SYMMETRICAL

BACK WALL



All dimensions are approximate. Structure measurements must be verified against the unit to ensure proper fit.