

MAAX SUBMITTAL SPECIFICATIONS

OPS-6036 - Base Model

MODEL NUMBER 106040

DIMENSIONS: 60" x 36" x 76 5/8" Fiberglass



STANDARD FEATURES

- 1-piece roll-in shower reinforced according to FHA accessibility requirements
- Configurable to be compliant with major accessibility codes when properly installed
- Center drain, textured bottom
- 1 1/8" skirt and 1/2" high threshold
- Base model

OPTIONS

- 60" Curtain rod
- Chrome recessed soap dish (drilled, not installed)
- 72 in. White vinyl shower curtain with Stainless Steel hooks
- Solid Brass drain with Chrome plated Stainless Steel grid

UNIQUE FEATURES

- None

SYSTEMS

- None

CERTIFICATIONS

Maax products adhere to one or more of the following certifications:



Project :
Contractor :
MAAX Representative : Tel :
Date :

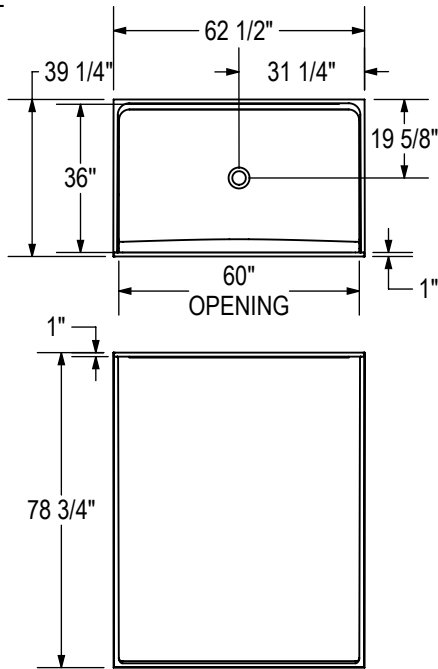
MAAX SUBMITTAL SPECIFICATIONS

OPS-6036 - Base Model

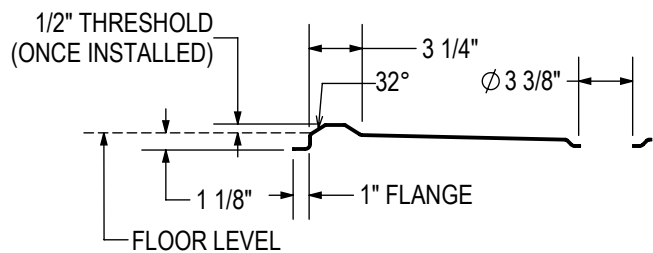
MODEL NUMBER 106040

TECHNICAL DRAWINGS

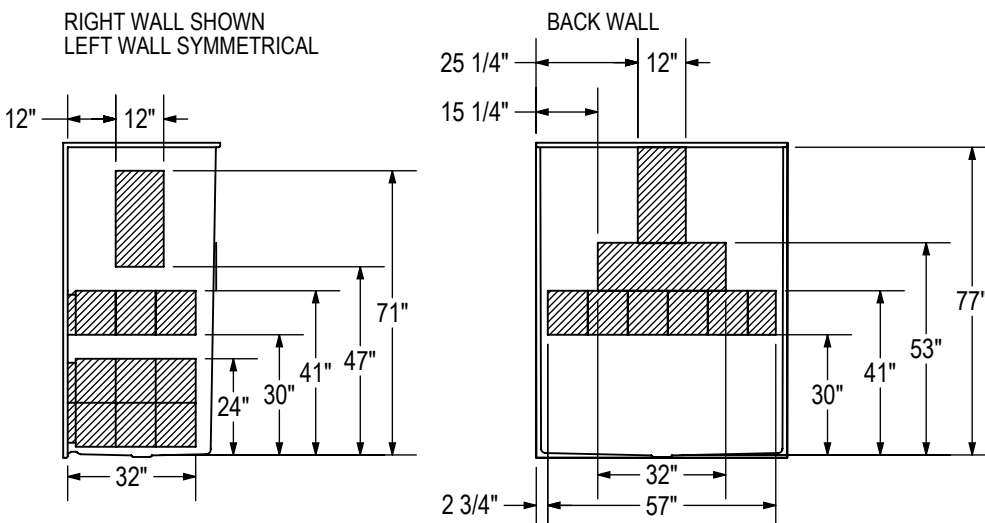
BASE MODEL



THRESHOLD DETAIL



REINFORCEMENT BACKING



All dimensions are approximate. Structure measurements must be verified against the unit to ensure proper fit.