

MAAX SUBMITTAL SPECIFICATIONS

OPTS-6032 - Base Model

MODEL NUMBER 106057

DIMENSIONS: 57" x 31 1/2" x 69 3/4" Fiberglass



STANDARD FEATURES

- 1-piece tub shower reinforced according to FHA accessibility requirements
- Configurable to be compliant with major accessibility codes when properly installed
- Right-hand or left-hand drain, textured bottom
- Above-the-Floor Rough

OPTIONS

- 56" Curtain rod (factory installed)
- 72 in. White vinyl shower curtain with Stainless Steel hooks
- Chrome recessed soap dish (drilled, not installed)

UNIQUE FEATURES

- Above-the-Floor Rough (AFR)

SYSTEMS

- None

CERTIFICATIONS

Maax products adhere to one or more of the following certifications:



Project :
Contractor :
MAAX Representative : Tel :
Date :

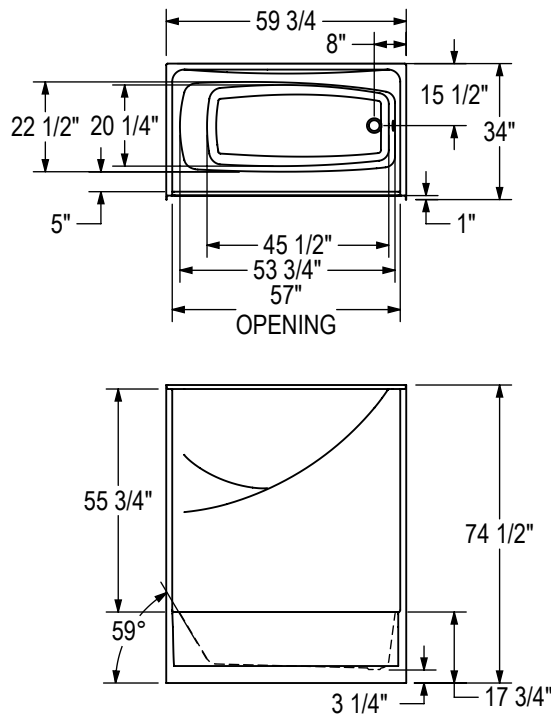
MAAX SUBMITTAL SPECIFICATIONS

OPTS-6032 - Base Model

MODEL NUMBER 106057

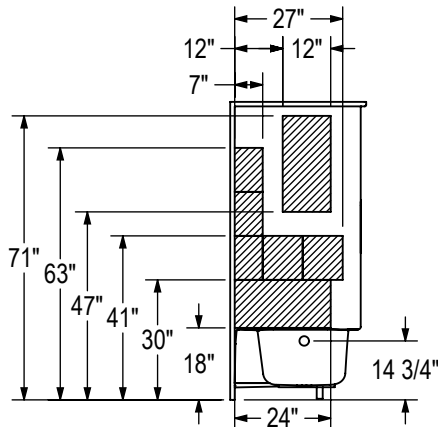
TECHNICAL DRAWINGS

BASE MODEL
 RIGHT SIDE SHOWN
 LEFT SIDE SYMMETRICAL

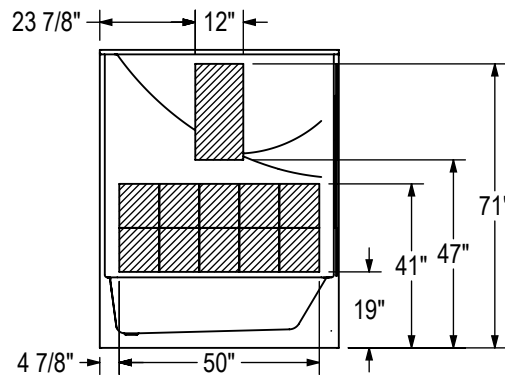


REINFORCEMENT BACKING

RIGHT WALL SHOWN
 LEFT WALL SYMMETRICAL



BACK WALL



All dimensions are approximate. Structure measurements must be verified against the unit to ensure proper fit.