

## MAAX SUBMITTAL SPECIFICATIONS

Vivez l'expérience

# MAAX®

Enjoy the experience

# Outlook BFS-36F

**MODEL NUMBER 105087**

DIMENSIONS: 39" x 40" x 79" Fiberglass



### STANDARD FEATURES

- 1-piece shower without roof cap
- Fully reinforced for customized placement of grab bars and seat
- Completely configurable to be ADA or ANSI A117.1-2003 compliant
- Integrated textured bottom, easy access design, centre drain

### OPTIONS

- Recessed soap dish
- Chrome fixture for BFS-48 & BFS-36
- Solid Brass drain with Stainless Steel grid
- ADA compliant option
- ANSI compliant option
- Horizontal L-shaped grab bar with textured finish

### UNIQUE FEATURES

- None

### SYSTEMS

- None

### DOOR SELECTION

Combine with MAAX's complete shower door offering visit [www.maax.com](http://www.maax.com)

### CERTIFICATIONS

Maax products adhere to one or more of the following certifications:



Project : .....  
Contractor : .....  
MAAX Representative : ..... Tel : .....  
Date : .....

[www.maax.com](http://www.maax.com)

2018-01-08

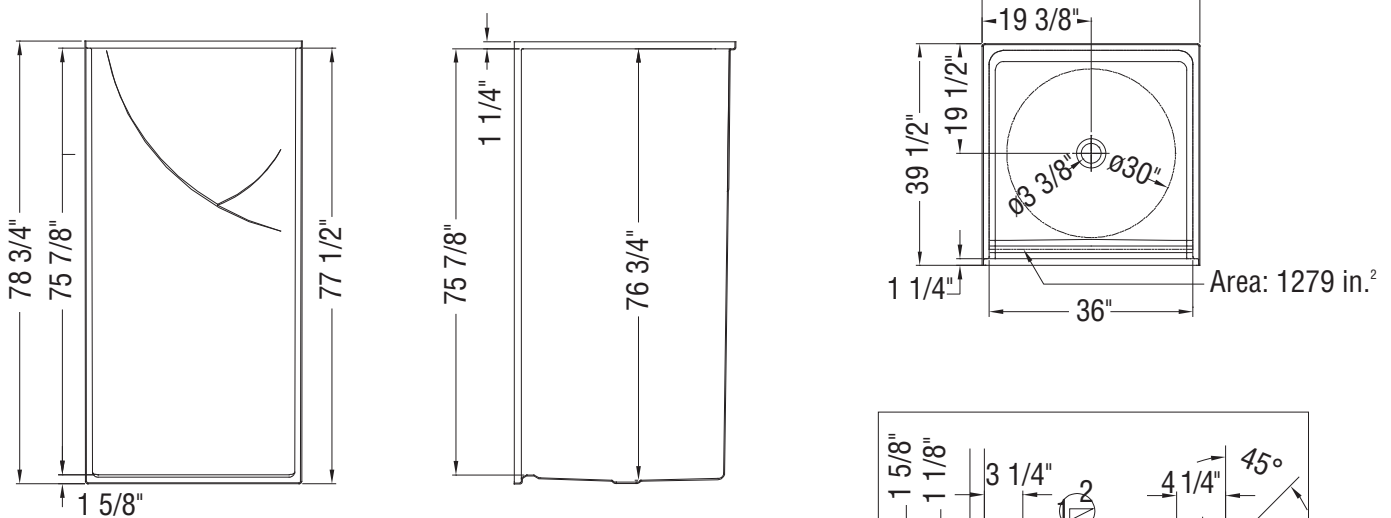
## MAAX SUBMITTAL SPECIFICATIONS

# Outlook BFS-36F

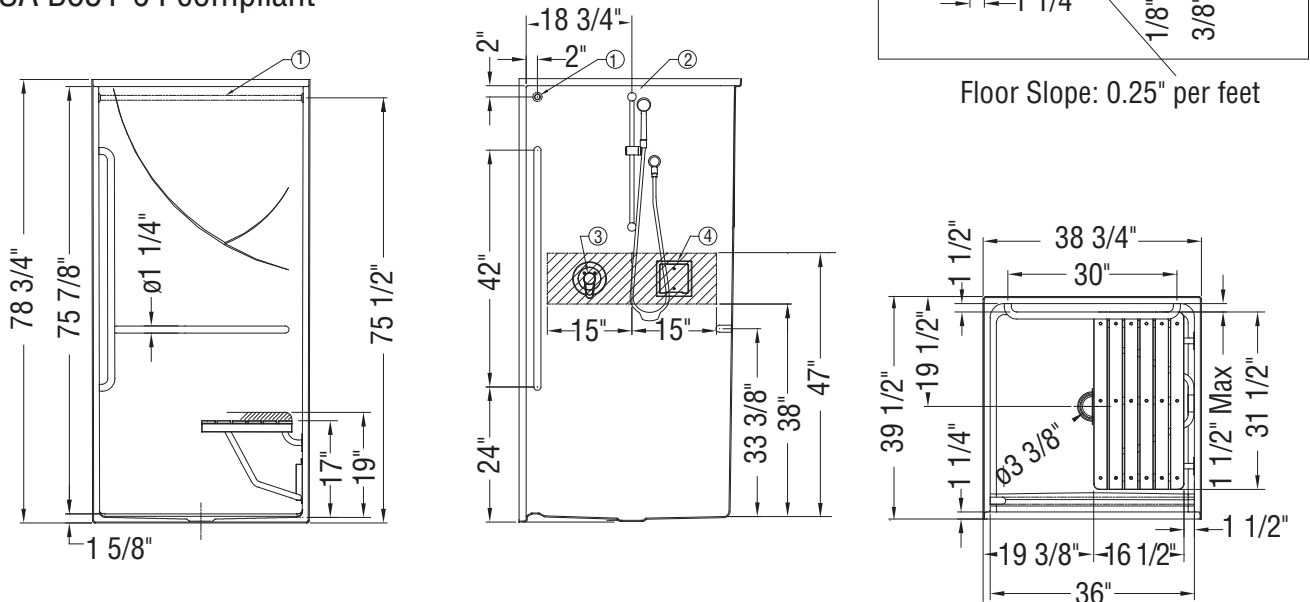
MODEL NUMBER 105087

## TECHNICAL DRAWINGS

Base model



CSA B651-04 compliant



① : Curtain Rod  
 ② : Hand Held Shower Option  
 ③ : Pressure Balancing Mixing Valve Option  
 ④ : Soap Dish Option

All dimensions are approximate. Structure measurements must be verified against the unit to ensure proper fit.