

MAAX SUBMITTAL SPECIFICATIONS

Outlook BFTS-60F

MODEL NUMBER 105248

DIMENSIONS: 60" x 33" x 77" Fiberglass



Project :
Contractor :
MAAX Representative : Tel :
Date :

www.maax.com

Vivez l'expérience
MAAX®
Enjoy the experience

STANDARD FEATURES

- 2-piece tub shower without roof cap
- Fully reinforced for customized placement of grab bars and seat
- Unique feature: completely configurable to be, ADA or ANSI A117.1-2003 compliant
- Integrated textured bottom and easy access design

OPTIONS

- ADA Compliant option
- CSA compliant option
- ANSI compliant option
- Ontario building code compliant option
- Bathtub rectangular fold up seat
- Large L-shaped or rectangular seat

UNIQUE FEATURES

- None

SYSTEMS

- None

DOOR SELECTION

Combine with MAAX's complete shower door offering visit www.maax.com

CERTIFICATIONS

Maax products adhere to one or more of the following certifications:



2018-01-08

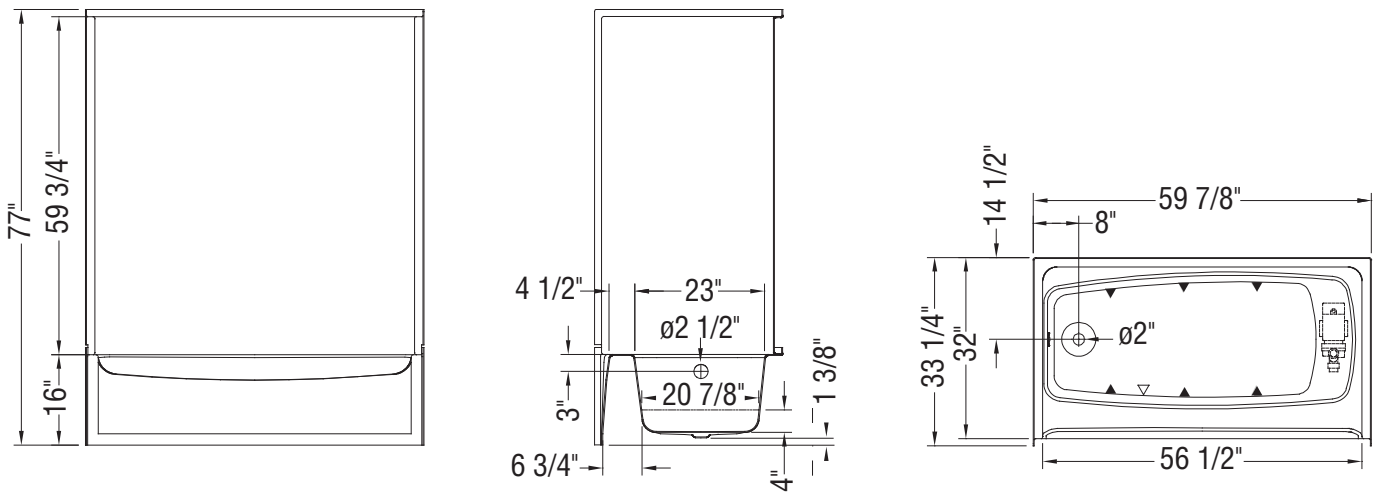
MAAX SUBMITTAL SPECIFICATIONS

Outlook BFTS-60F

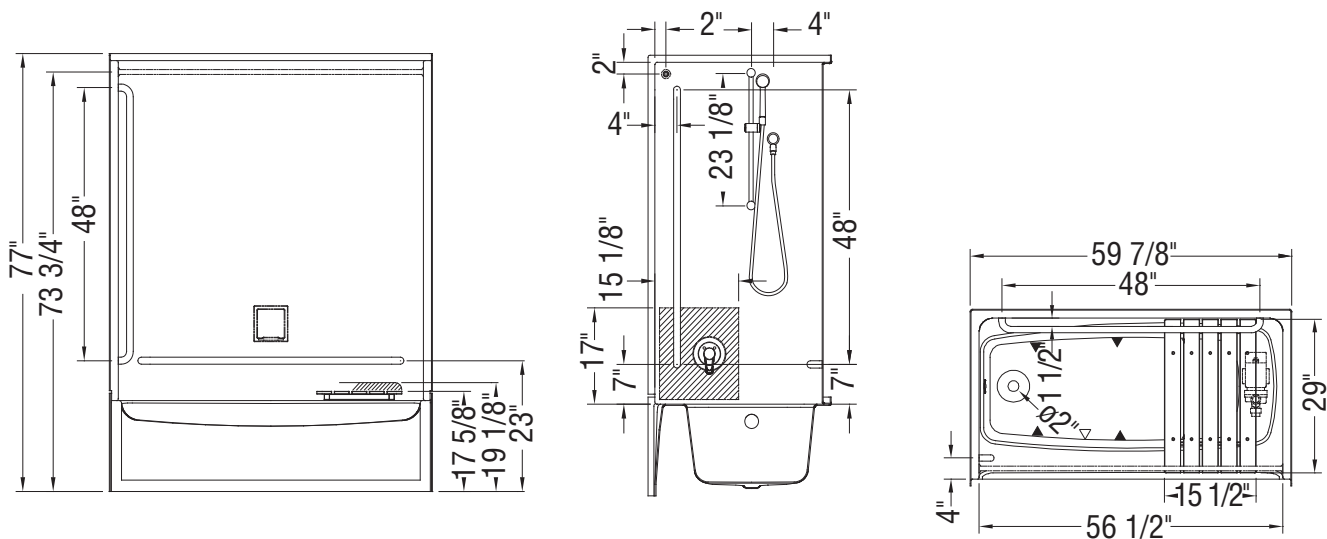
MODEL NUMBER 105248

TECHNICAL DRAWINGS

Base model



CSA B651-04 Compliant



(▲) : Indicates Whirlpool jets positioning
 (△) : Indicates suction positioning

All dimensions are approximate. Structure measurements must be verified against the unit to ensure proper fit.