

## MAAX SUBMITTAL SPECIFICATIONS

# Reverie (Freestanding)

**MODEL NUMBER 105463**

DIMENSIONS: 67" x 37" x 24" Acrylic



Project : .....  
Contractor : .....  
MAAX Representative : ..... Tel : .....  
Date : .....

[www.maax.com](http://www.maax.com)

Vivez l'expérience  
**MAAX®**  
Enjoy the experience

### STANDARD FEATURES

- Unique feature: asymmetric modern look
- Above-the-Floor Rough (AFR) and F<sup>2</sup> Drain compatible
- Deck for faucets
- MAAX flexible waste and overflow highly recommended
- Center drain and 4 adjustable leveling legs
- Available in White only

### OPTIONS

- One chromotherapy light
- Metal trim kit for Air Push Control
- OPT 20138-084 Flexible waste and overflow
- OPT 20138-105 Flexible waste and overflow
- Foam pillow with 2 suction pads
- Metal Trim Kit for air push control

### UNIQUE FEATURES

- 1 Tub - 2 Pieces
- 4 Adjustable Leveling Legs
- Above-the-Floor Rough (AFR)

### SYSTEMS

 Aerosens  Chromotherapy

### CERTIFICATIONS

Maax products adhere to one or more of the following certifications:



2018-01-08

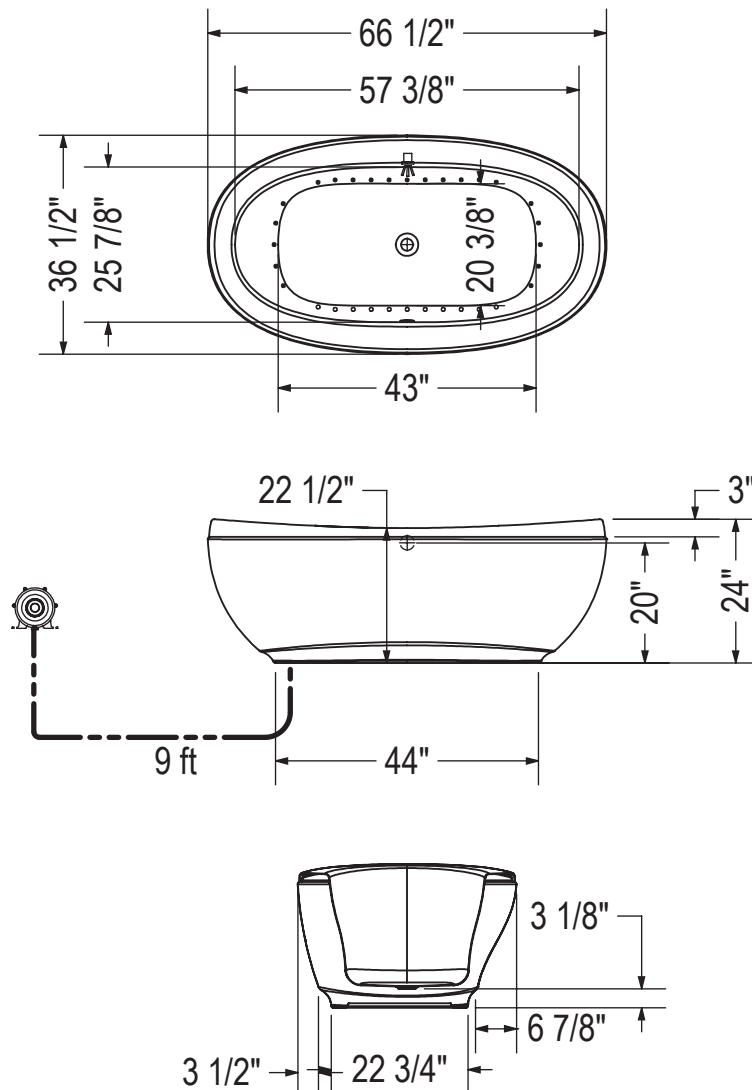
## MAAX SUBMITTAL SPECIFICATIONS

# Reverie (Freestanding)

MODEL NUMBER 105463

## TECHNICAL DRAWINGS

AIR SYSTEM



- ( ● ) : Indicates airjets positioning
- ( ☼ ) : Indicates chromatherapy light positioning

All dimensions are approximate. Structure measurements must be verified against the unit to ensure proper fit.