

MAAX SUBMITTAL SPECIFICATIONS

Rubix 6030 AFR DTF

MODEL NUMBER 105818

DIMENSIONS: 60" x 30" x 20" Acrylic



Project :
Contractor :
MAAX Representative : Tel :
Date :

www.maax.com

Vivez l'expérience
MAAX®
Enjoy the experience

STANDARD FEATURES

- Narrow end decks, long bathing well and smooth bottom
- Cubic design
- Integrated flat apron and tiling flange (double)
- Right or left drain
- Above-the-Floor Rough (AFR) included
- Alcove installation

OPTIONS

- Cable-operated waste and overflow
- Foam pillow with 2 suction pads
- Waste and overflow

UNIQUE FEATURES

- Above-the-Floor Rough (AFR)

SYSTEMS

- None

DOOR SELECTION

Combine with MAAX's complete shower door offering visit www.maax.com

CERTIFICATIONS

Maax products adhere to one or more of the following certifications:



2018-01-08

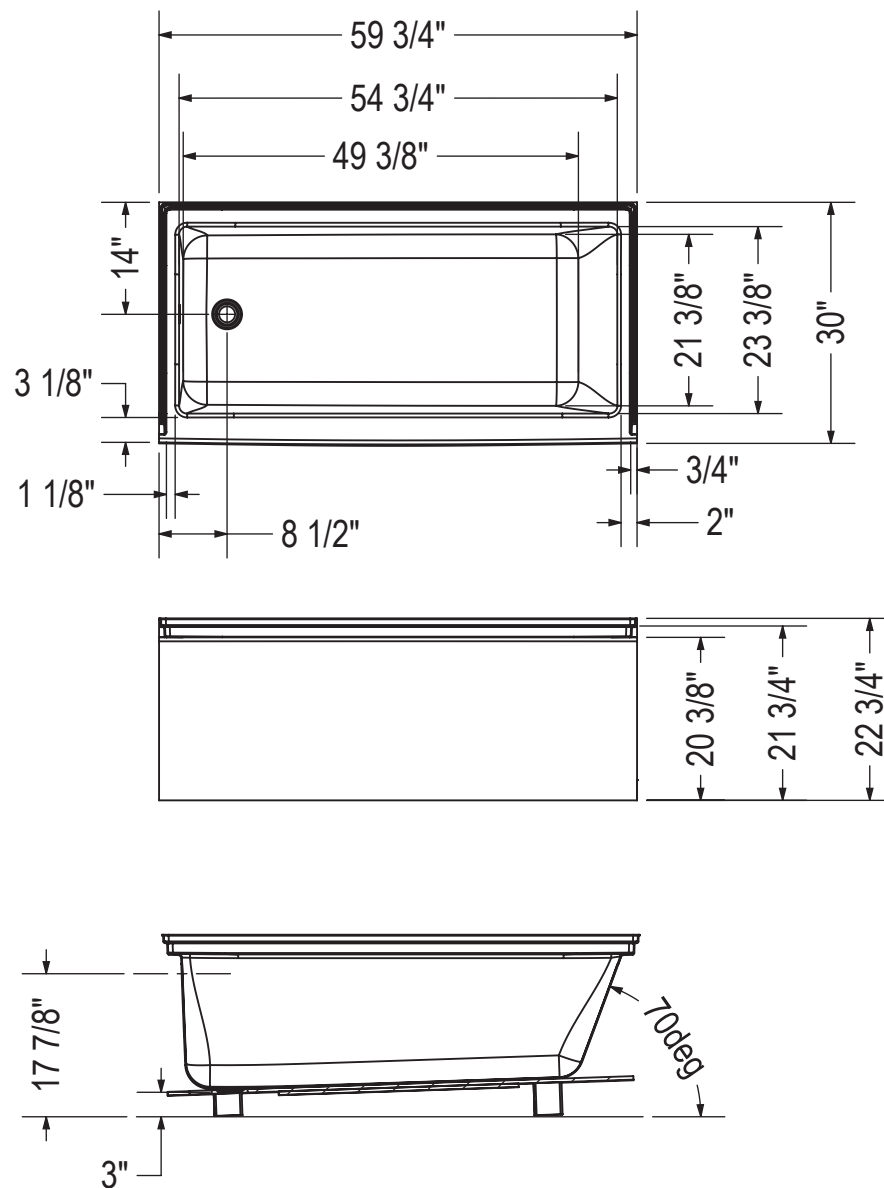
MAAX SUBMITTAL SPECIFICATIONS

Rubix 6030 AFR DTF

MODEL NUMBER 105818

TECHNICAL DRAWINGS

DTF AFR OPTION



All dimensions are approximate. Structure measurements must be verified against the unit to ensure proper fit.