

## MAAX SUBMITTAL SPECIFICATIONS

# Saturna 6036

**MODEL NUMBER 106167**

DIMENSIONS: 60" x 36" x 20" Acrylic



Vivez l'expérience  
**MAAX**<sup>®</sup>  
Enjoy the experience

### STANDARD FEATURES

- Oval shape bathtub
- Drop-in installation
- End drain
- No skirt available

### OPTIONS

- One chromatherapy light
- Water heater assembly (factory installed)
- Metal trim kit for whirlpool and combined systems
- Metal trim kit for Air Push Control
- Cable-operated waste and overflow
- Foam pillow with 2 suction pads

### UNIQUE FEATURES

- None

### SYSTEMS

 MAAX Professional Whirlpool

 Aeroeffect **DOOR**

 Combined  
Whirlpool/Aeroeffect

### SELECTION

Combine with MAAX's complete shower door offering visit [www.maax.com](http://www.maax.com)

### CERTIFICATIONS

Maax products adhere to one or more of the following certifications:



Project : .....  
Contractor : .....  
MAAX Representative : ..... Tel : .....  
Date : .....

[www.maax.com](http://www.maax.com)

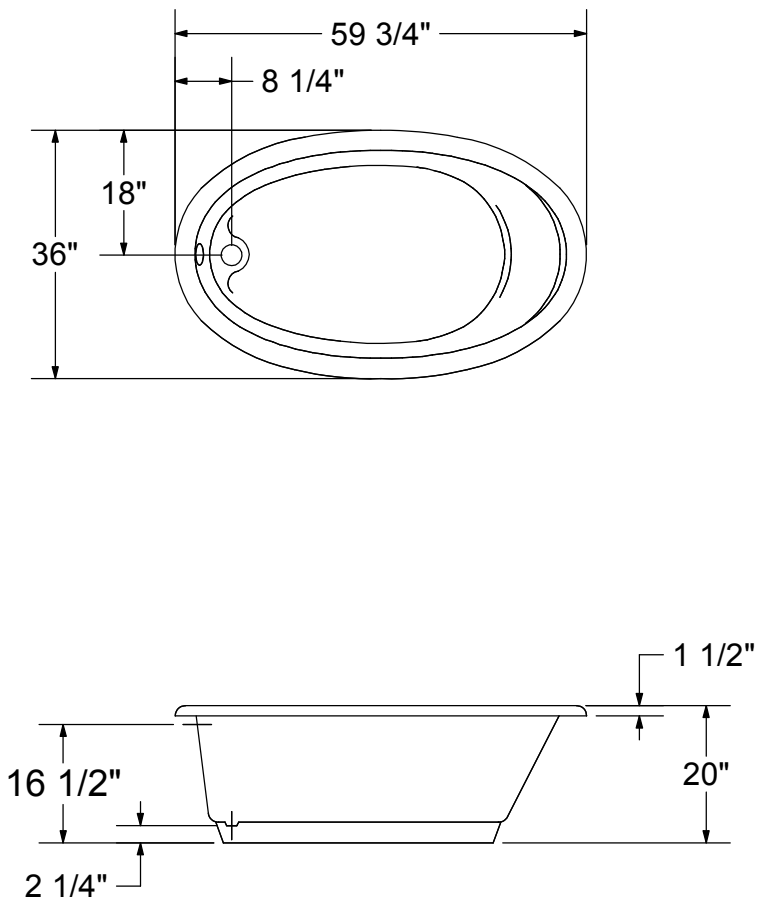
2018-01-08

## MAAX SUBMITTAL SPECIFICATIONS

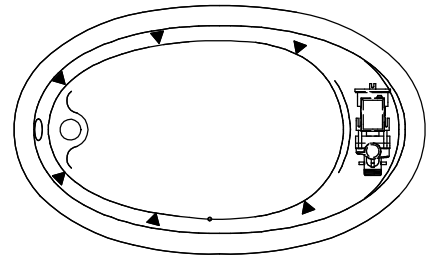
# Saturna 6036

MODEL NUMBER 106167

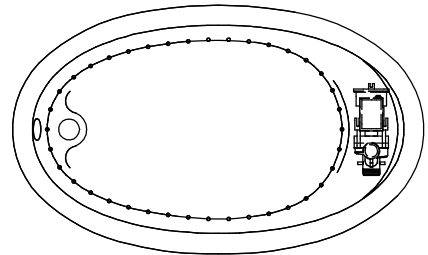
## TECHNICAL DRAWINGS



WHIRLPOOL SYSTEM



AIR SYSTEM



- ( ▲ ) : Indicates whirlpool jets positioning
- ( △ ) : Indicates suction positioning
- ( ● ) : Indicates airjets positioning

All dimensions are approximate.  
 Structure measurement must be verified against the unit to ensure proper fit.