

## MAAX SUBMITTAL SPECIFICATIONS

# Serenade F

**MODEL NUMBER 105516**

DIMENSIONS: 67" x 37" x 24" Acrylic



Project : .....  
Contractor : .....  
MAAX Representative : ..... Tel : .....  
Date : .....

**www.maax.com**

Vivez l'expérience  
**MAAX®**  
Enjoy the experience

### STANDARD FEATURES

- Unique feature: asymmetric modern look
- Above-the-Floor Rough (AFR) and F<sup>2</sup> Drain compatible
- Deck for faucets (MAAX flexible waste & overflow recommended)
- Freestanding installation
- Center drain
- One-piece apron
- Available in White only

### OPTIONS

- One chromatherapy light
- Metal trim kit for Air Push Control
- Positioning template for bathtub installation
- F2 Drain - kit for freestanding bathtub installation
- F2 Drain – Pack of 12 kits for freestanding bathtub installation
- F2 Drain - PVC kit for bathtub installation

### UNIQUE FEATURES

- Above-the-Floor Rough (AFR)
- 4 Adjustable Leveling Legs
- 1 Tub - 2 Pieces
- Compatible with F2 Drain

### SYSTEMS

 Aeroeffect  Chromatherapy

### CERTIFICATIONS

Maax products adhere to one or more of the following certifications:



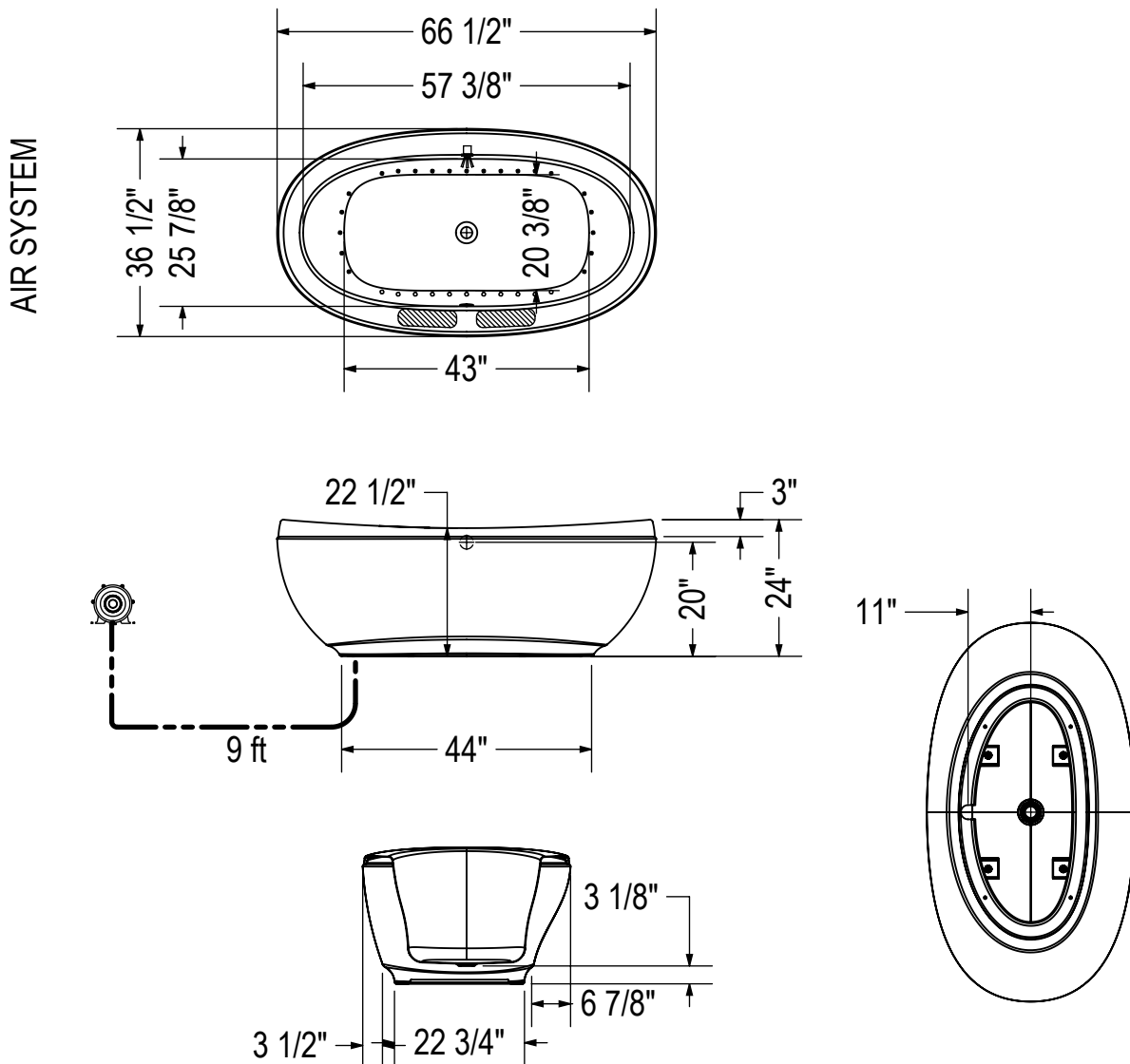
2018-01-08

## MAAX SUBMITTAL SPECIFICATIONS

# Serenade F

MODEL NUMBER 105516

## TECHNICAL DRAWINGS



- ( ● ) : Indicates airjets positioning
- ( ☼ ) : Indicates chromatherapy light positioning
- ( ▨ ) : Recommended faucet area 2 sections of 10" (L) x 3" (W).

All dimensions are approximate. Structure measurements must be verified against the unit to ensure proper fit.