

# MAAX SUBMITTAL SPECIFICATIONS

Vivez l'expérience

# MAAX®

Enjoy the experience

## 32SKD

**MODEL NUMBER 103006**

DIMENSIONS: 32" x 34" x 74" Fiberglass



### STANDARD FEATURES

- 3-piece shower
- Built-in shelf

### OPTIONS

- PVC quick caulking shower drain with Chrome or Brushed Nickel grid
- ABS shower drain with Chrome stainless steel grid
- ABS shower drain with ABS grid

### UNIQUE FEATURES

- None

### SYSTEMS

- None

### DOOR SELECTION

Combine with MAAX's complete shower door offering visit [www.maax.com](http://www.maax.com)

Project : .....  
Contractor : .....  
MAAX Representative : ..... Tel : .....  
Date : .....

### CERTIFICATIONS

Maax products adhere to one or more of the following certifications:



[www.maax.com](http://www.maax.com)

2018-01-08

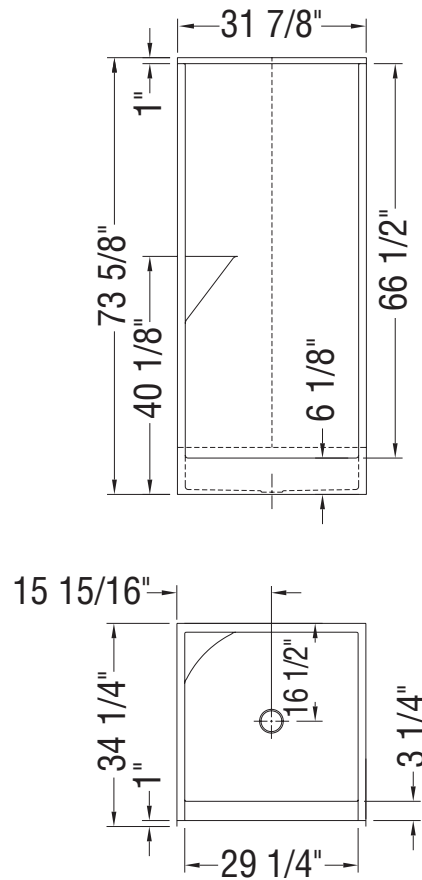
## MAAX SUBMITTAL SPECIFICATIONS

# 32SKD

MODEL NUMBER 103006

## TECHNICAL DRAWINGS

---



All dimensions are approximate. Structure measurements must be verified against the unit to ensure proper fit.

2018-01-08