

MAAX SUBMITTAL SPECIFICATIONS

Soprano II (1-Piece)

MODEL NUMBER 100894

DIMENSIONS: 60" x 33" x 75" Acrylic



Vivez l'expérience

MAAX®

Enjoy the experience

STANDARD FEATURES

- Shower one-piece without roof cap
- Integrated soap dish, shelves and towel bar
- Wide ergonomic seat

OPTIONS

- ABS shower drain with Chrome stainless steel grid
- PVC quick caulking shower drain with Chrome or Brushed Nickel grid
- ABS shower drain with ABS grid

UNIQUE FEATURES

- None

SYSTEMS

- None

DOOR SELECTION

Combine with MAAX's complete shower door offering visit www.maax.com

Project :

Contractor :

MAAX Representative : Tel :

Date :

CERTIFICATIONS

Maax products adhere to one or more of the following certifications:



www.maax.com

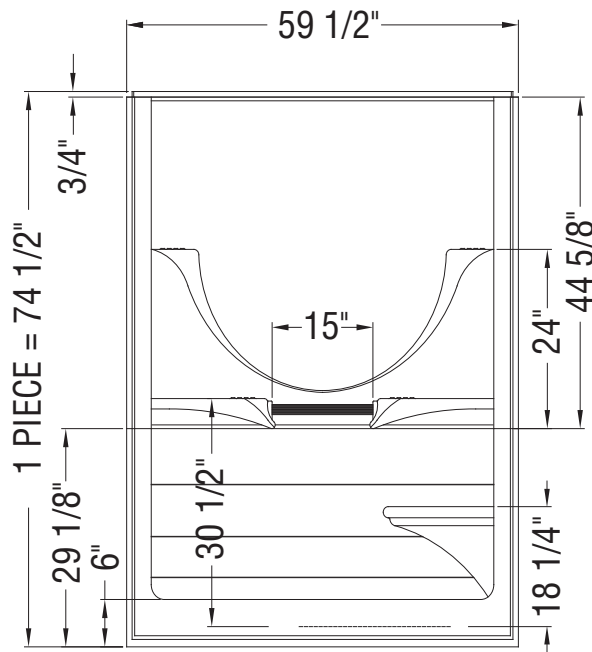
2018-01-08

MAAX SUBMITTAL SPECIFICATIONS

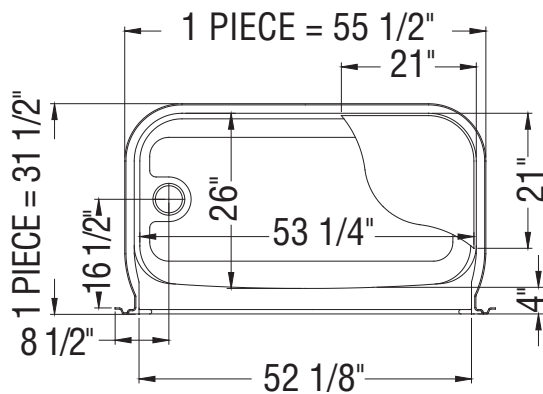
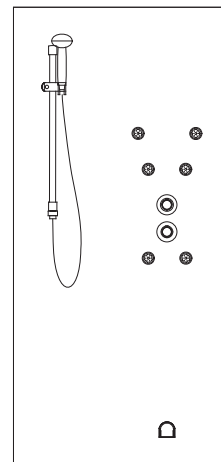
Soprano II (1-Piece)

MODEL NUMBER 100894

TECHNICAL DRAWINGS



Integrated
Multi-Jet System



All dimensions are approximate. Structure measurements must be verified against the unit to ensure proper fit.