

MAAX SUBMITTAL SPECIFICATIONS

SPS 3448 AFR

MODEL NUMBER 145033

DIMENSIONS: 48" x 34" x 22"



Project :
Contractor :
MAAX Representative : Tel :
Date :

www.maax.com

Vivez l'expérience
MAAX®
Enjoy the experience

STANDARD FEATURES

- Rectangular shower base
- Integrated tiling flange
- Right or left integrated seat
- (3 3/8 in.) Above-the-Floor Rough (AFR) available
- Textured floor
- Center drain

OPTIONS

- Tile Adaptor (for door installation)

UNIQUE FEATURES

- Tiling Flange
- Above-the-Floor Rough (AFR)

SYSTEMS

- None

DOOR SELECTION

Combine with MAAX's complete shower door offering visit www.maax.com

CERTIFICATIONS

Maax products adhere to one or more of the following certifications:



2018-01-08

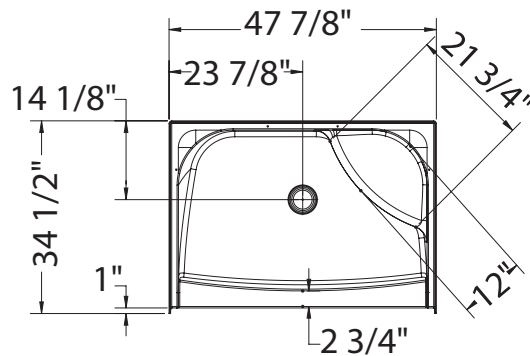
MAAX SUBMITTAL SPECIFICATIONS

SPS 3448 AFR

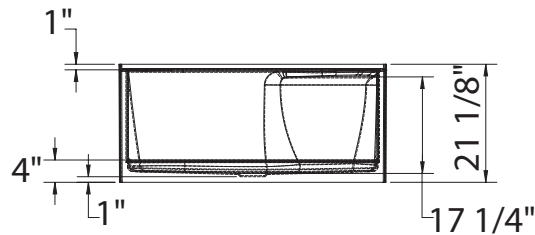
MODEL NUMBER 145033

TECHNICAL DRAWINGS

RIGHT SEAT SHOWN
LEFT SEAT SYMMETRICAL



NOT ABOVE-THE-FLOOR



ABOVE-THE-FLOOR

