

MAAX SUBMITTAL SPECIFICATIONS

SST42

MODEL NUMBER 105932

DIMENSIONS: 42" x 34" x 75" Fiberglass



Project :
Contractor :
MAAX Representative : Tel :
Date :

Vivez l'expérience
MAAX[®]
Enjoy the experience

STANDARD FEATURES

- 1-piece shower without roof cap
- Integrated shelves
- Center drain
- Unique feature: 8 in. tile pattern finish

OPTIONS

- Wall reinforcement (one wall)

UNIQUE FEATURES

- None

SYSTEMS

- None

DOOR SELECTION

Combine with MAAX's complete shower door offering visit www.maax.com

CERTIFICATIONS

Maax products adhere to one or more of the following certifications:



www.maax.com

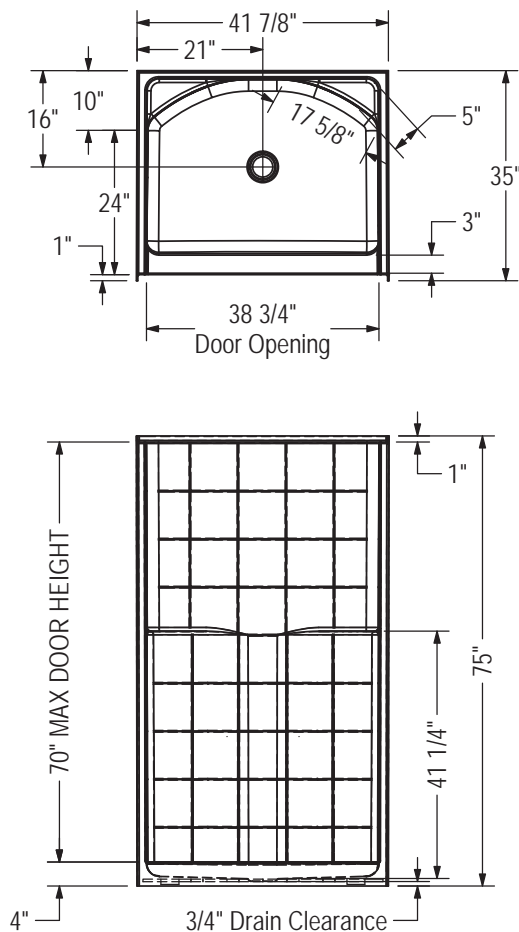
2018-01-08

MAAX SUBMITTAL SPECIFICATIONS

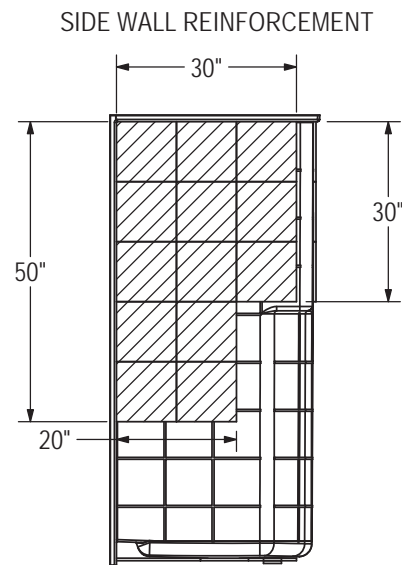
SST42

MODEL NUMBER 105932

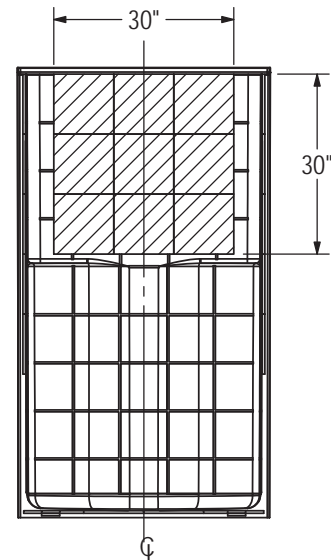
TECHNICAL DRAWINGS



REINFORCEMENT BACKING



BACKWALL REINFORCEMENT



All dimensions are approximate. Structure measurements must be verified against the unit ensure proper fit.