

## MAAX SUBMITTAL SPECIFICATIONS

# Talma 7242

**MODEL NUMBER 106169**

DIMENSIONS: 72" x 42" x 21" Acrylic



Project : .....  
Contractor : .....  
MAAX Representative : ..... Tel : .....  
Date : .....

**www.maax.com**

Vivez l'expérience  
**MAAX**<sup>®</sup>  
Enjoy the experience

### STANDARD FEATURES

- Oval shape bathtub
- Drop-in installation
- Integrated armrest and textured floor
- End drain

### OPTIONS

- One chromatherapy light
- Water heater assembly (factory installed)
- Metal trim kit for whirlpool and combined systems
- Metal trim kit for Air Push Control
- Cable-operated waste and overflow
- Foam pillow with 2 suction pads

### UNIQUE FEATURES

- None

### SYSTEMS

- MAAX Professional Whirlpool
- Aeroeffect **DOOR**
- Combined Whirlpool/Aeroeffect

### SELECTION

Combine with AKER's complete shower door offering visit [www.akerbymax.com](http://www.akerbymax.com)

### CERTIFICATIONS

Maax products adhere to one or more of the following certifications:



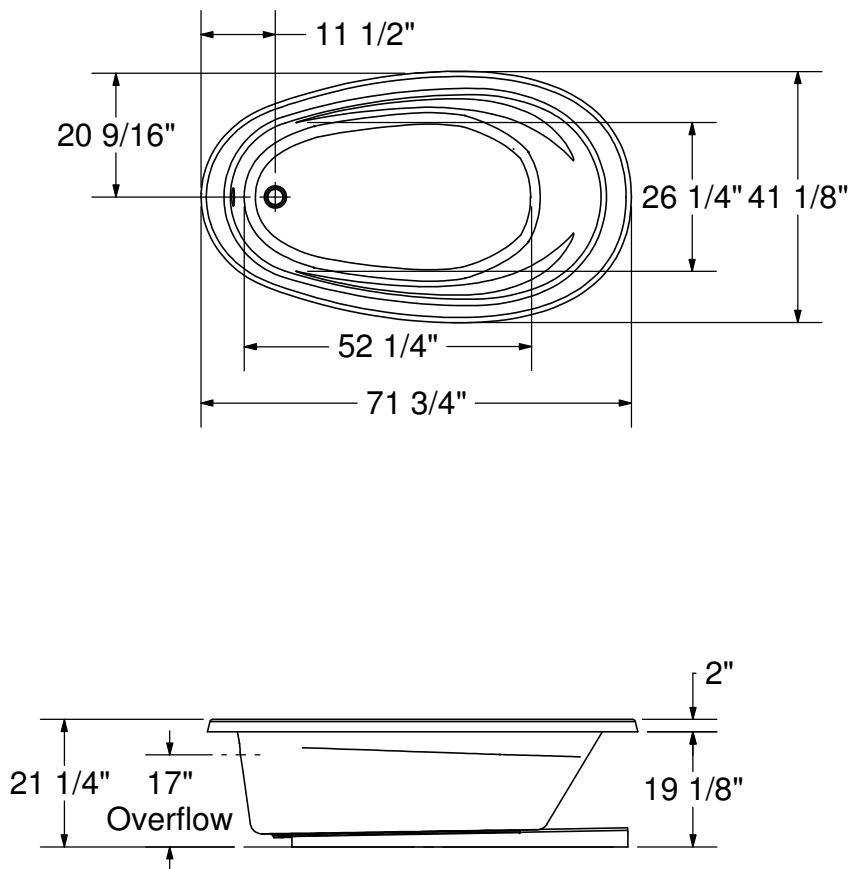
2018-01-08

## MAAX SUBMITTAL SPECIFICATIONS

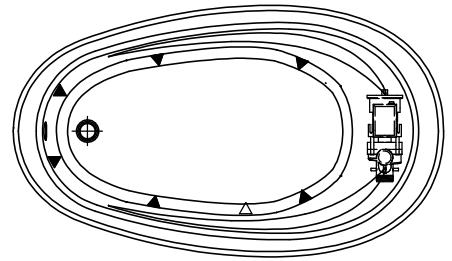
# Talma 7242

MODEL NUMBER 106169

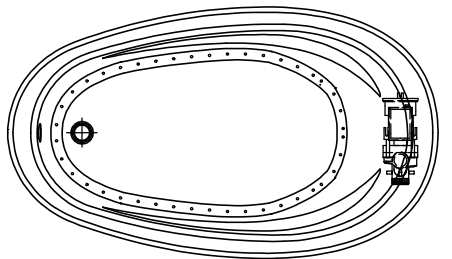
## TECHNICAL DRAWINGS



WHIRLPOOL SYSTEM



AIR SYSTEM



- : Indicates optional grab bar positioning
- ( ▲ ) : Indicates whirlpool jets positioning
- ( △ ) : Indicates suction positioning
- ( ● ) : Indicates airjets positioning

All dimensions are approximate.  
 Structure measurement must be verified against the unit to ensure proper fit.