

## MAAX SUBMITTAL SPECIFICATIONS

# Tempo (1-Piece)

**MODEL NUMBER 200024**

DIMENSIONS: 51" x 34" x 85" Acrylic



### STANDARD FEATURES

- Built-in shelves
- Soap dishes
- Towel bar
- Built-in seat (optional)
- Roof cap

### OPTIONS

- Recessed light

### UNIQUE FEATURES

- None

### SYSTEMS

- None

### DOOR SELECTION

Combine with MAAX's complete shower door offering visit [www.maax.com](http://www.maax.com)

Project : .....  
Contractor : .....  
MAAX Representative : ..... Tel : .....  
Date : .....

### CERTIFICATIONS

Maax products adhere to one or more of the following certifications:



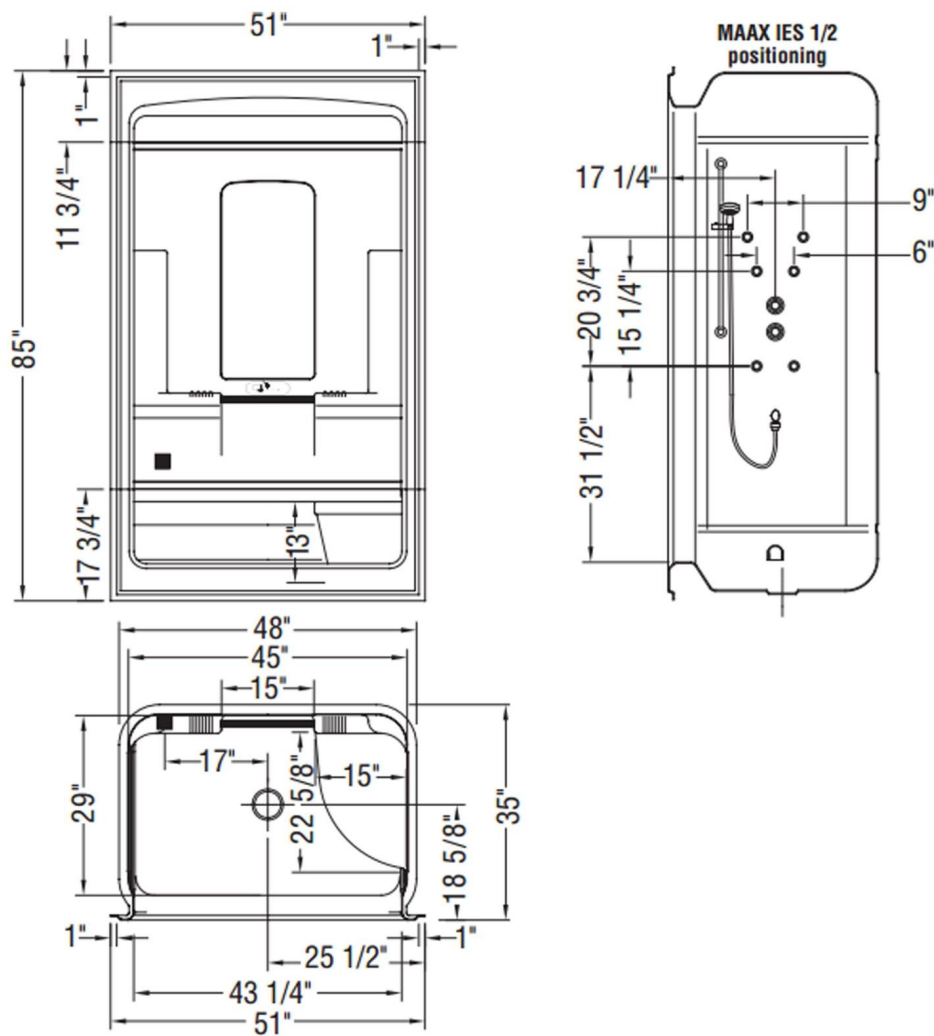
## MAAX SUBMITTAL SPECIFICATIONS

# Tempo (1-Piece)

MODEL NUMBER 200024

## TECHNICAL DRAWINGS

Tempo 3 Piece



All dimensions are approximate. Structure measurements must be verified against the unit to ensure proper fit

2018-01-08