

MAAX SUBMITTAL SPECIFICATIONS

Vivez l'expérience

MAAX®

Enjoy the experience

TS-3660

MODEL NUMBER 141267

DIMENSIONS: 60" x 37" x 78" Fiberglass



STANDARD FEATURES

- 1-piece tub shower
- Integrated top corner shelves and soap dish
- 18 ½" apron, 14 ½" deep bathing well
- Right or left-hand drain
- Above-the-Floor Rough (AFR)

OPTIONS

- All walls reinforced
- Wall reinforcement (one wall)
- Cable-operated waste and overflow
- Foam pillow with 2 suction pads
- Waste and overflow

UNIQUE FEATURES

- Above-the-Floor Rough (AFR)

SYSTEMS

- None

DOOR SELECTION

Combine with MAAX's complete shower door offering visit www.maax.com

CERTIFICATIONS

Maax products adhere to one or more of the following certifications:



Project :
Contractor :
MAAX Representative : Tel :
Date :

www.maax.com

2018-01-08

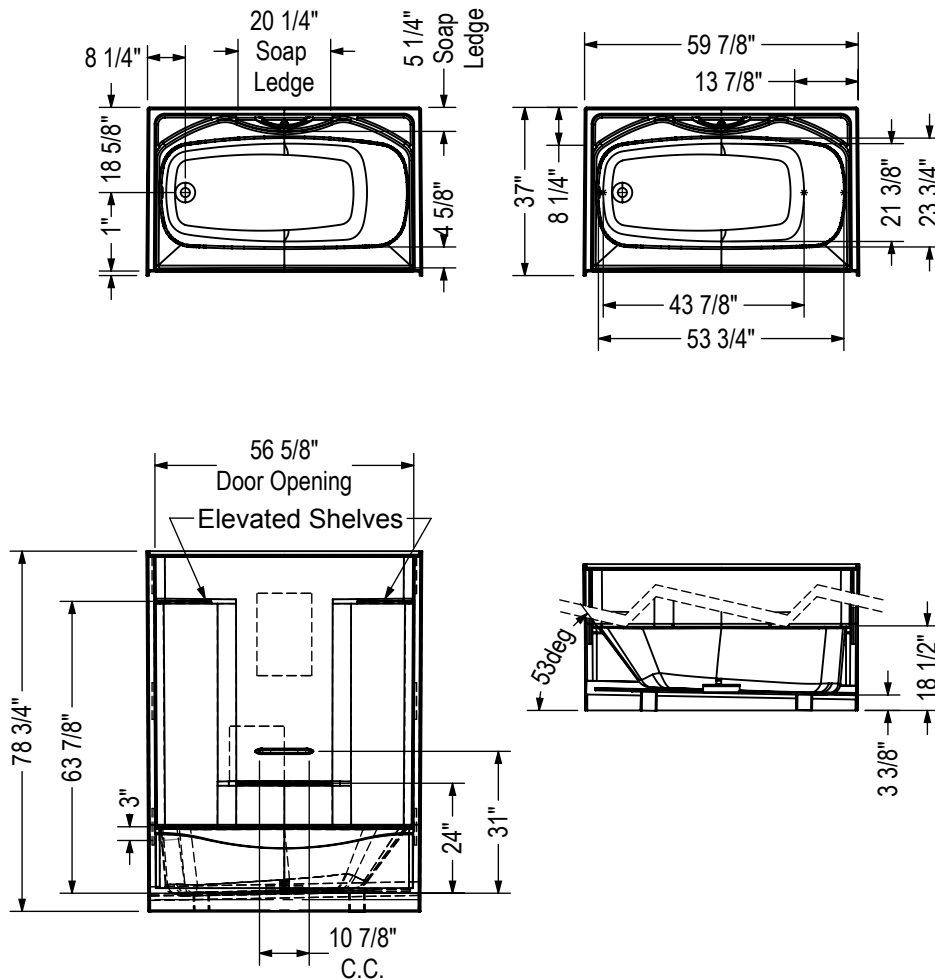
MAAX SUBMITTAL SPECIFICATIONS

TS-3660

MODEL NUMBER 141267

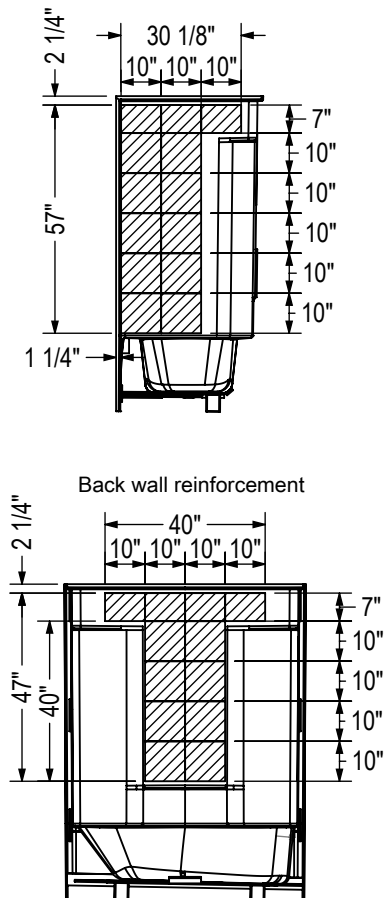
TECHNICAL DRAWINGS

STANDARD



REINFORCEMENT BACKING

Right wall reinforcement shown
 Left wall reinforcement symmetrical



All dimensions are approximate. Structure measurements must be verified against the unit to ensure proper fit.

*