

MAAX SUBMITTAL SPECIFICATIONS

TST-3660

MODEL NUMBER 105931

DIMENSIONS: 60" x 37" x 78" Fiberglass



STANDARD FEATURES

- 1-piece tub shower
- Integrated top corner shelves and soap dish
- 18 ½" apron, 14 ½" deep bathing well
- Right or left-hand drain / Above-the-Floor Rough (AFR)
- Unique feature: 8" x 8" tile pattern finish

OPTIONS

- Wall reinforcement (one wall)
- All walls reinforced
- Foam pillow with 2 suction pads
- Waste and overflow

UNIQUE FEATURES

- Above-the-Floor Rough (AFR)

SYSTEMS

- None

DOOR SELECTION

Combine with MAAX's complete shower door offering visit www.maax.com

CERTIFICATIONS

Maax products adhere to one or more of the following certifications:



Project :
Contractor :
MAAX Representative : Tel :
Date :

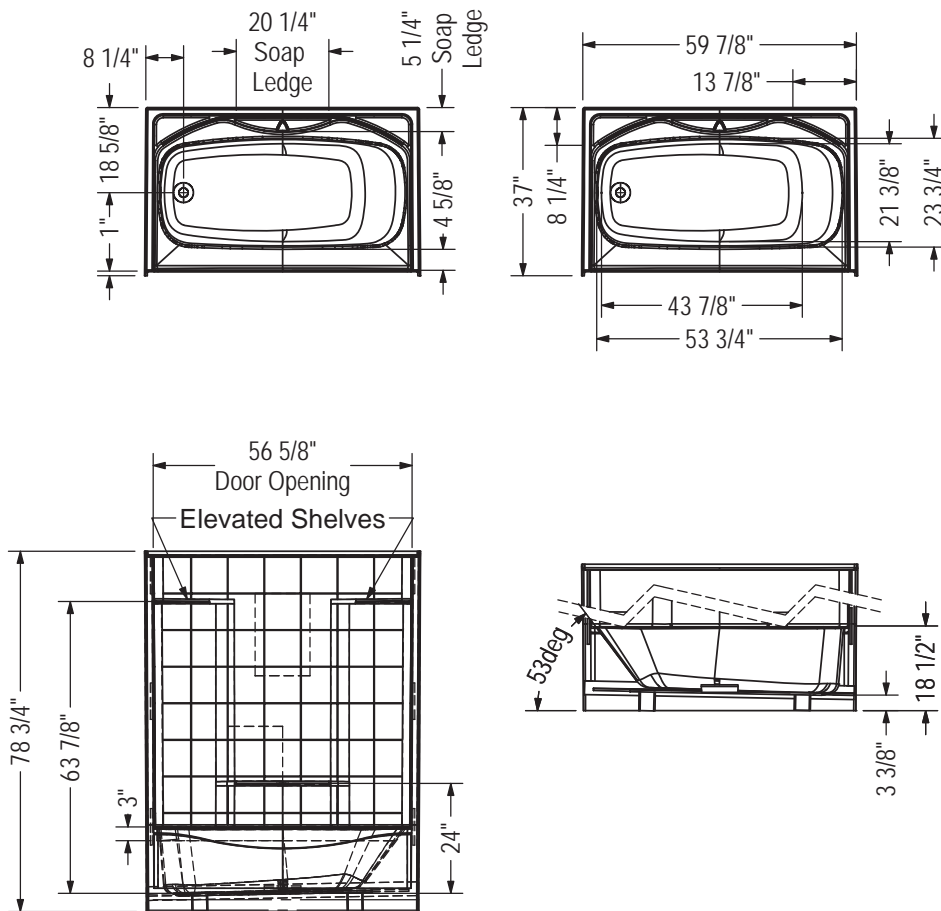
MAAX SUBMITTAL SPECIFICATIONS

TST-3660

MODEL NUMBER 105931

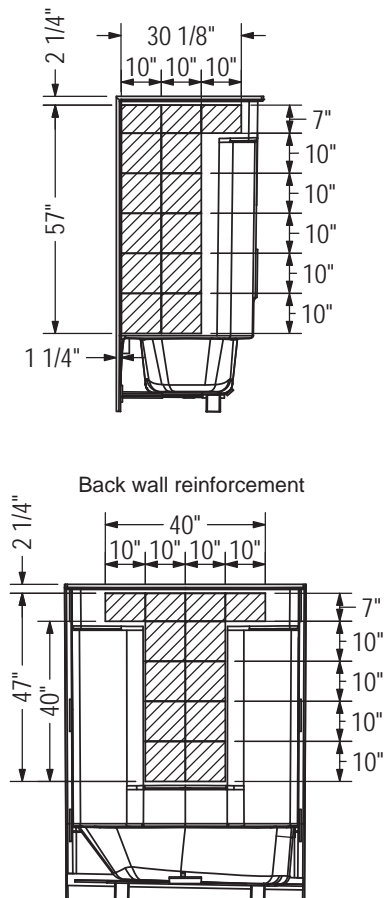
TECHNICAL DRAWINGS

STANDARD



REINFORCEMENT BACKING

Right wall reinforcement shown
 Left wall reinforcement symmetrical



All dimensions are approximate. Structure measurements must be verified against the unit to ensure proper fit.