

MAAX SUBMITTAL SPECIFICATIONS

VO6042 5 FT

MODEL NUMBER 140112

DIMENSIONS: 60" x 42" x 18" Fiberglass



Vivez l'expérience

MAAX®

Enjoy the experience

STANDARD FEATURES

- Classic oval bathtub
- Integrated apron
- 6 inch integrated back splash and tiling flange
- Center drain
- Alcove installation

OPTIONS

- Chromatherapy
- Water heater assembly (factory installed)
- Metal trim kit
- Cable-operated waste and overflow
- Foam pillow with 2 suction pads
- Metal trim kit for Whirlpools and combined systems

UNIQUE FEATURES

- None

SYSTEMS

- None

DOOR SELECTION

Combine with MAAX's complete shower door offering visit www.maax.com

CERTIFICATIONS

Maax products adhere to one or more of the following certifications:



Project :
Contractor :
MAAX Representative : Tel :
Date :

www.maax.com

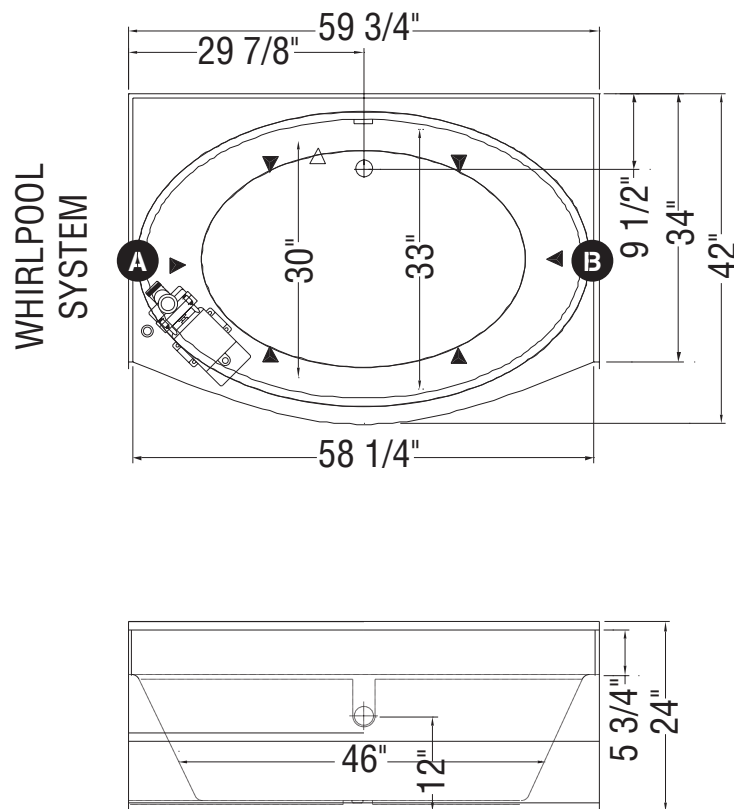
2018-01-08

MAAX SUBMITTAL SPECIFICATIONS

VO6042 5 FT

MODEL NUMBER 140112

TECHNICAL DRAWINGS



A : Specify blower and/or pump position when ordering
B : Specify blower and/or pump position when ordering

(\blacktriangle) : Indicates Whirlpool jets positioning

(\triangle) : Indicates suction positioning

All dimensions are approximate. Structure measurements must be verified against the unit to ensure proper fit.