

TO COMPLETE YOUR ORDER, THIS DOCUMENT MUST BE SIGNED AND FAXED TO MAAX ORDER DESK
FAX: 1-800-527-3368 • PHONE: 1-800-523-4093

DATE:		JOB NAME:	
CUSTOMER:		QUOTE#:	
SHIP TO:			
P.O. #:		PHONE:	
QUANTITY:		SPECIAL NOTES:	
	/ /		/ /
PLUMBING CONTRACTOR APPROVAL	DATE	GENERAL CONTRACTOR APPROVAL	DATE
	/ /		/ /
ENGINEER APPROVAL	DATE	ARCHITECT APPROVAL	DATE

IMPORTANT NOTES:

1. MAAX assumes no responsibility for final code compliance. Information and specifications taken from this document must be confirmed with appropriate authorities.
2. Units are code compliant when fully equipped and installed according to guidelines.

INTERIOR DIMENSIONS	57" L x 31 ½" W x 69 ¾" H
EXTERIOR DIMENSIONS	59 ¾" L x 34" W x 74 ½" H
APRON HEIGHT	17 ¾"
WEIGHT	154 LB
MATERIAL	FIBERGLASS
WARRANTY	5 YEARS

STANDARD FEATURES

- 1-piece tub shower
- Reinforced according to Fair Housing Act accessibility requirements
- Right or left-hand drain
- Textured bottom
- Above-the-Floor Rough (AFR)
- Available in standard and non-standard colors

COMPLIANT PACKAGE

Fully equipped - ADA compliant

Tub shower base model with complete ADA package

- 4 x 24" Horizontal straight textured stainless steel grab bars
- Removable Phenolic white seat
- Chrome pressure balance mixing valve with hand-held shower
- Chrome 24" slide bar & 60" flexible hose

Specify colors

☐ White ☐ Bone ☐ Biscuit

Non-standard color: _____

Options

- ☐ 56" Chrome curtain rod (factory-installed)
- ☐ Chrome recessed soap dish (drilled, not installed)

Accessories (sold separately)

- ☐ 60" White vinyl shower curtain with stainless steel hooks

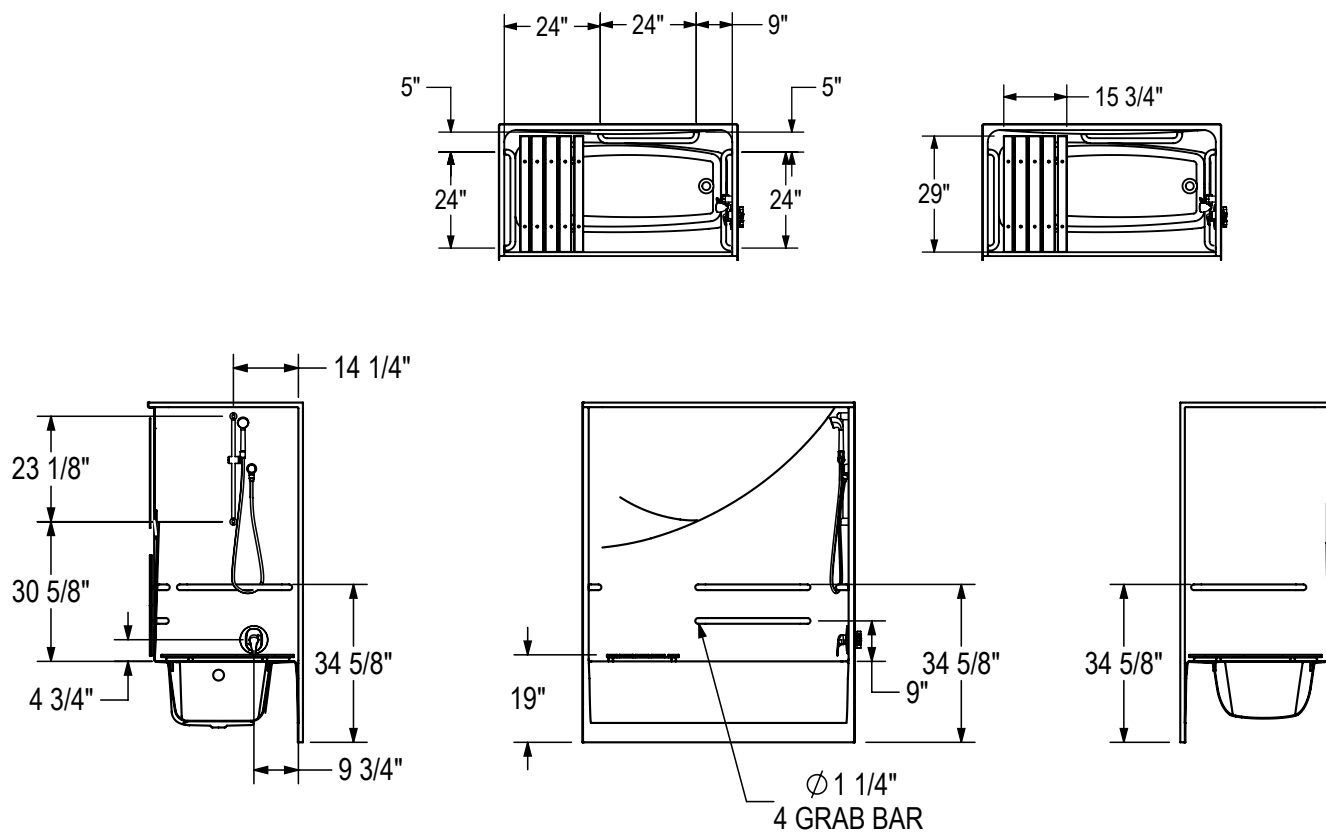
(106062-R/L)



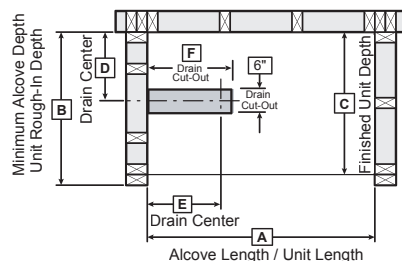
TO COMPLETE YOUR ORDER, THIS DOCUMENT MUST BE SIGNED AND FAXED TO MAAX ORDER DESK
FAX: 1-800-527-3368 • PHONE: 1-800-523-4093

TECHNICAL DRAWINGS

Right side shown
Left side symmetrical



FRAMING DIMENSIONS



Model	A	B	C	D	E	F
106062	59 3/4"	34"	33"	15 1/2"	8"	10 1/2"

MINIMUM CLEARANCE

TUB SHOWER 60" X 32"	
ADA	
G	60"
H	30"

Clearance zone from the control wall and adjacent to the open face.

