

## OUTLOOK<sup>™</sup> BFS-48F SHOWER

### ADA COMPLIANT



DATE: \_\_\_\_\_

JOB NAME: \_\_\_\_\_

CUSTOMER: \_\_\_\_\_

QUOTE #: \_\_\_\_\_

SHIP TO: \_\_\_\_\_

PO #: \_\_\_\_\_

PHONE #: \_\_\_\_\_

QTY: \_\_\_\_\_

SPECIAL NOTES: \_\_\_\_\_

\_\_\_\_\_/\_\_\_\_\_/\_\_\_\_\_  
PLUMBING CONTRACTOR APPROVAL DATE

\_\_\_\_\_/\_\_\_\_\_/\_\_\_\_\_  
GENERAL CONTRACTOR APPROVAL DATE

\_\_\_\_\_/\_\_\_\_\_/\_\_\_\_\_  
ENGINEER APPROVAL DATE

\_\_\_\_\_/\_\_\_\_\_/\_\_\_\_\_  
ARCHITECT APPROVAL DATE

**To complete your order, this document must be signed and faxed to the MAAX Order Desk nearest you.  
Please see reverse for fax number.**

INT. DIM.	48 X 36 X 76-3/4 (1219 X 914 X 1950)
EXT. DIM.	50-3/4 X 39-1/2 X 78-3/4 (1289 X 1003 X 2000)
THRESHOLD HT.	1" (25 mm) skirt, No interior threshold
WEIGHT	186 lbs (84 kg) gross
WARRANTY	Fiberglass - Three years
CODE LISTED	ADA
STANDARD FEATURES	<ul style="list-style-type: none"> <li>• Reinforced unit</li> <li>• Center drain</li> <li>• Textured bottom</li> </ul>

#### INCLUDED OPTIONS

*Please specify colors/finishes when ordering*

- L-Shaped Fold-Up Seat:
  - ☐ Naugahyde (381) ☐ Phenolic (382) ☐ Left ☐ Right
- 18-in. Straight Grab Bar:
  - ☐ White (001) ☐ Stainless Steel (106)
- 30-in. Straight Grab Bar:
  - ☐ White (001) ☐ Stainless Steel (106)
- 48-in. Curtain Rod with Grommets: Stainless Steel (106)
- 48-in. White Vinyl Shower Curtain with Stainless Steel Hooks (106)
- Solid brass drain with stainless steel grid. Quick caulk seal fits a 2 in. schedule 40 steel or plastic pipe.

#### ADDITIONAL ACCESSORIES AND OPTIONS<sup>1</sup>

*Please specify colors/finishes when ordering*

- ☐ **Straight Grab Bar**
  - ☐ 12 in. ☐ 18 in. ☐ 24 in. ☐ 30 in. ☐ 42 in. ☐ 48 in.
  - ☐ White (001) ☐ Stainless Steel (106)
- ☐ **Horizontal L-Shaped Grab Bar**
  - ☐ White (001) ☐ Stainless Steel (106)
- ☐ **Built-In Soap Dish\***
  - ☐ White (001) ☐ Stainless Steel (106)
- ☐ **Pressure Balance Mixing Valve with**
  - 1-function Hand-Held Shower including Slide Bar with 60-in. Hose and Vacuum Breaker: Chrome (084)\*
  - ☐ 24-in. Slide Bar ☐ 36-in. Slide Bar

\* Pressure balance mixing valve and soap dish are not factory installed.

<sup>1</sup>Please indicate custom positionings on reverse side drawings.  
Additional charges may apply.

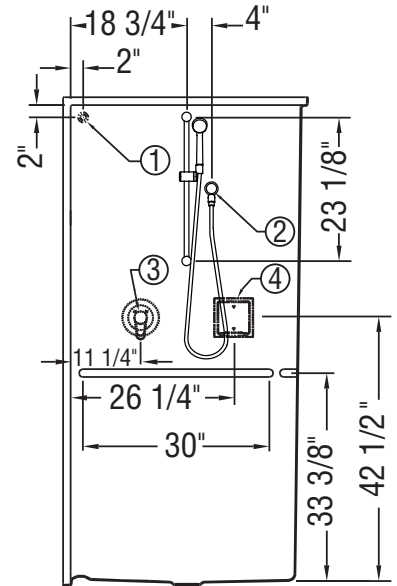
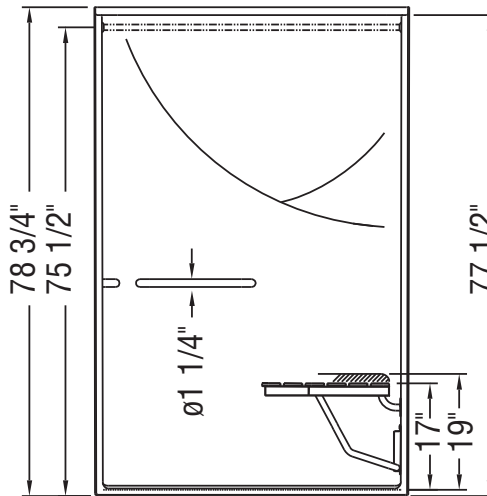
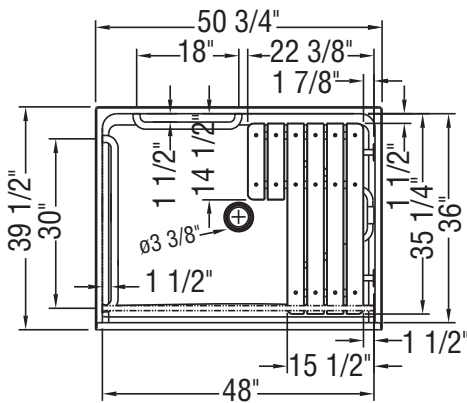


## Please indicate custom positionings\*

\* Repositioning the grab bar or seat outside of the compliant zones render the unit no longer compliant. Consult code regulations.

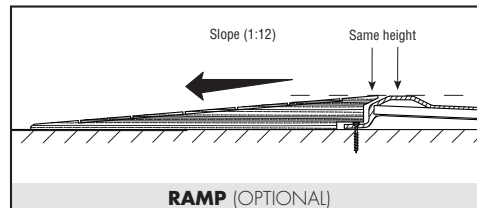
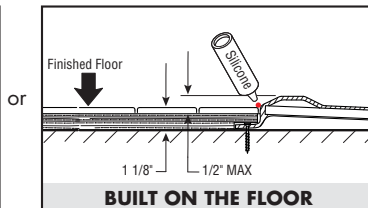
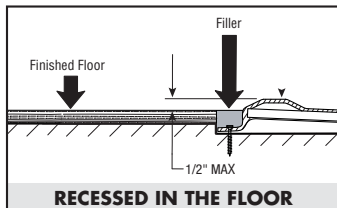
## Right-hand model shown.

Unless otherwise specified, the option and grab bar positioning is pre-determined by the seat location; please specify seat location when ordering (R/L).

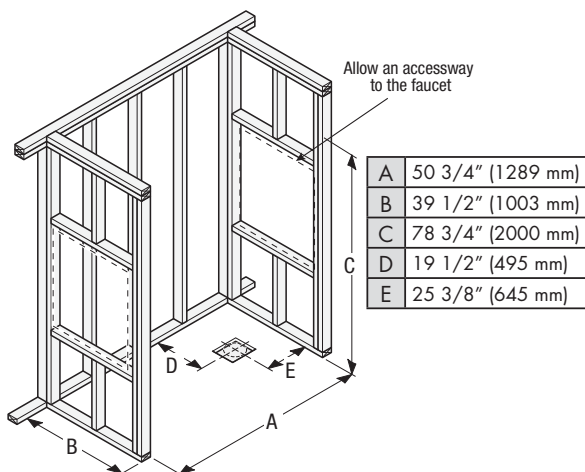


- ① Curtain rod (included)      ③ Pressure valve (not factory installed)  
② Hand-held shower (slide bar factory installed)      ④ Soap dish (not factory installed)

## THRESHOLD INSTALLATIONS



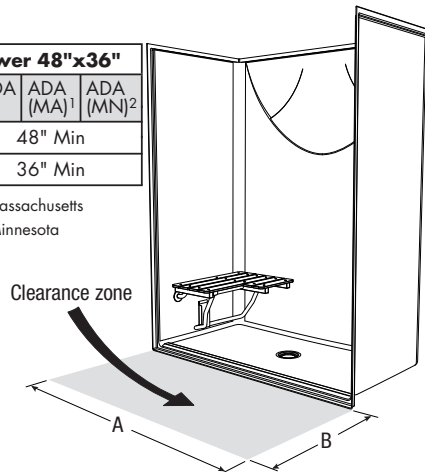
## FRAMING



## CLEARANCE

Shower 48"x36"			
	ADA	ADA (MA) <sup>1</sup>	ADA (MN) <sup>2</sup>
A	48" Min		
B	36" Min		

<sup>1</sup> (MA) Massachusetts  
<sup>2</sup> (MN) Minnesota



## INSTALLATION WARNING

Due to possible water leaks between the lip of the shower and the curtain, MAAX recommends the installation of a floor drain outside the unit, in rooms where the units will be installed. All our showers have an inside curb of 1/2" (13mm) height applicable to a transfer type use, precisely for the ADA standards.

**Important:** The finished height of the threshold must comply with the following Canadian and American standards;

- Canada: height from 6 mm to 13 mm according to CAN/CSA B651 (Accessible and Usable Buildings and facilities).
- U.S.: 1/2" maximum height according to ADA/ANSI A117.1 (Accessible and Usable Buildings and facilities).

This standard does not apply to tub-showers.

Please fax to:

**MAAX Beauce, Quebec:** 1-800-201-8308

**MAAX Lachine, Quebec:** 1-888-361-2045

**MAAX Armstrong, British Columbia:** 1-888-514-4442