

## OUTLOOK™ BFS-48F SHOWER BASE MODEL



DATE: \_\_\_\_\_

JOB NAME: \_\_\_\_\_

CUSTOMER: \_\_\_\_\_

QUOTE #: \_\_\_\_\_

SHIP TO: \_\_\_\_\_

PO #: \_\_\_\_\_

PHONE #: \_\_\_\_\_

QTY: \_\_\_\_\_

SPECIAL NOTES: \_\_\_\_\_

APPLICABLE CODE: ADA ☐ CSA ☐ ANSI ☐

OTHER REGIONAL CODE: \_\_\_\_\_

\_\_\_\_\_/\_\_\_\_\_/\_\_\_\_\_  
PLUMBING CONTRACTOR APPROVAL DATE

\_\_\_\_\_/\_\_\_\_\_/\_\_\_\_\_  
GENERAL CONTRACTOR APPROVAL DATE

\_\_\_\_\_/\_\_\_\_\_/\_\_\_\_\_  
ENGINEER APPROVAL DATE

\_\_\_\_\_/\_\_\_\_\_/\_\_\_\_\_  
ARCHITECT APPROVAL DATE

**To complete your order, this document must be signed and faxed to the MAAX Order Desk nearest you.  
Please see reverse for fax number.**

INT. DIM.	48 X 36 X 76-3/4 (1219 X 914 X 1950)
EXT. DIM.	50-3/4 X 39-1/2 X 78-3/4 (1289 X 1003 X 2000)
THRESHOLD HT.	1" (25 mm) skirt, No interior threshold
WEIGHT	186 lbs (84 kg) gross
WARRANTY	Fiberglass - Three years
CODE LISTED	None
STANDARD FEATURES	<ul style="list-style-type: none"> <li>• Reinforced unit</li> <li>• Center drain</li> <li>• Textured bottom</li> </ul>

### ACCESSORIES AND OPTIONS<sup>1</sup>

*Please specify colors/finishes when ordering*

☐ **L-Shaped Fold-Up Seat:**

☐ Naugahyde (381) ☐ Phenolic (382) ☐ Left ☐ Right

☐ **Rectangular Fold-up Seat:**

☐ Naugahyde (381) ☐ Phenolic (382) ☐ Left ☐ Right

☐ **Horizontal L-Shaped Grab Bar:**

☐ White (001) ☐ Stainless Steel (106)

☐ **Straight Grab Bar**

☐ 12 in. ☐ 18 in. ☐ 24 in. ☐ 30 in. ☐ 42 in.

☐ White (001) ☐ Stainless Steel (106)

☐ **Built-In Soap Dish\***

☐ White (001) ☐ Stainless Steel (106)

☐ **Pressure Balance Mixing Valve with**

1-function Hand-Held Shower including Slide Bar with 60-in.

Hose and Vacuum Breaker: Chrome (084)\*

☐ 24-in. Slide Bar ☐ 36-in. Slide Bar

☐ **48-in. Curtain Rod with Grommets: Stainless Steel (106)**

☐ **48-in. White Vinyl Shower Curtain with  
Stainless Steel Hooks (106)**

☐ **Solid brass drain with stainless steel grid. Quick caulk  
seal fits a 2 in. schedule 40 steel or plastic pipe.**

\* Pressure balance mixing valve and soap dish are not factory installed.

<sup>1</sup>Please indicate custom positionings on reverse side drawings.

Additional charges may apply.

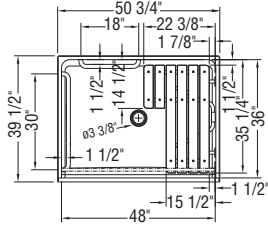


## Select from the possible option positionings:

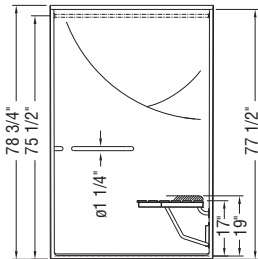
For custom see below.

### ❑ ADA compliant

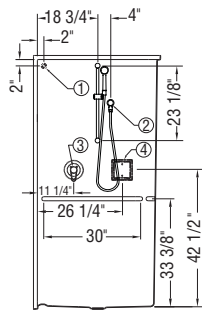
TOP



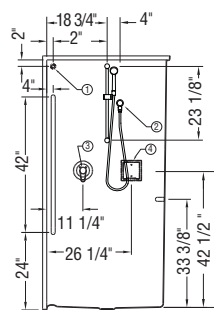
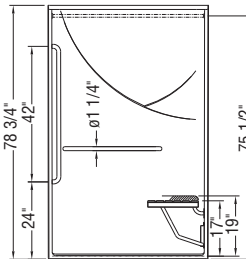
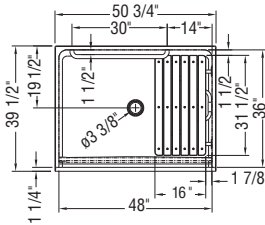
FRONT



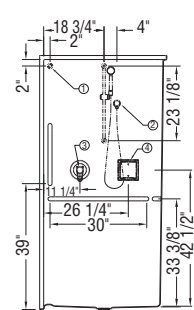
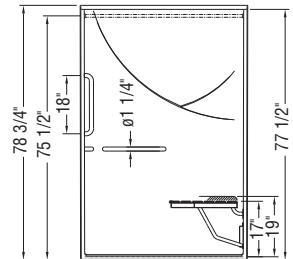
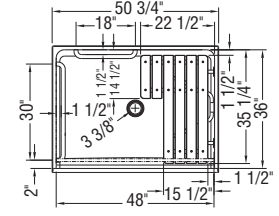
LEFT SIDE



### ❑ CSA compliant \*



### ❑ ANSI compliant



\* Available in Canada only

## If you require custom positioning, specify measurements here:

Additional charge applies. MAAX reserves the right to refuse to manufacture a custom unit that is not in compliance with the applicable code specified above. Consult code regulations.

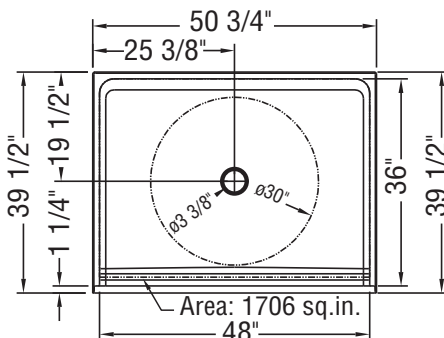
① Curtain rod

② Hand-held shower (slide bar factory installed)

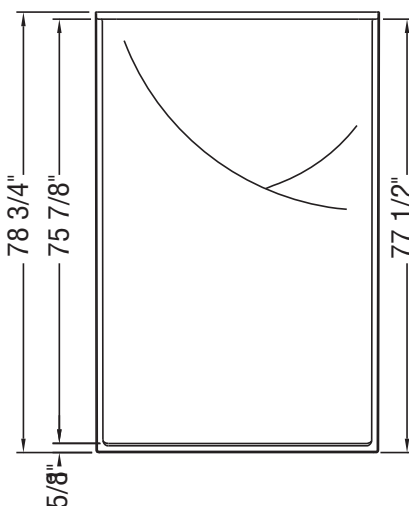
③ Pressure valve (not factory installed)

④ Soap dish (not factory installed)

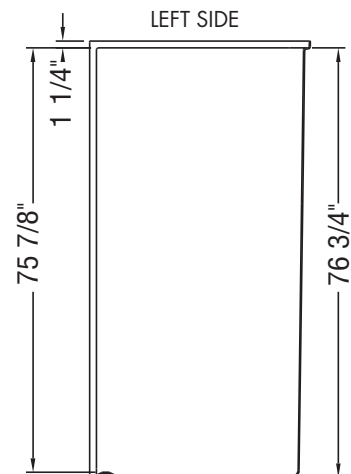
TOP



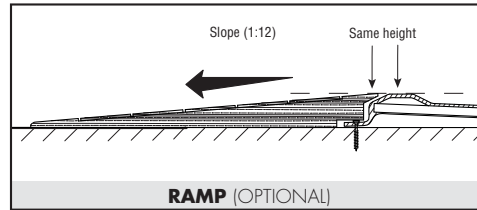
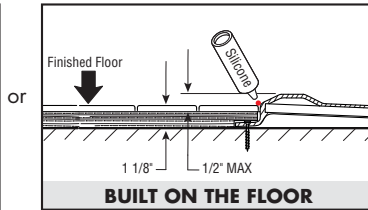
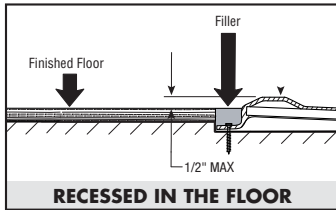
FRONT



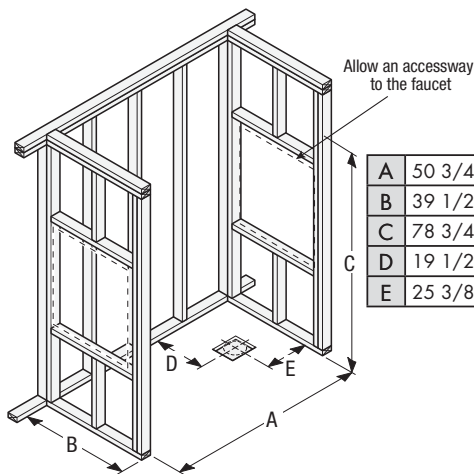
LEFT SIDE



## THRESHOLD INSTALLATIONS



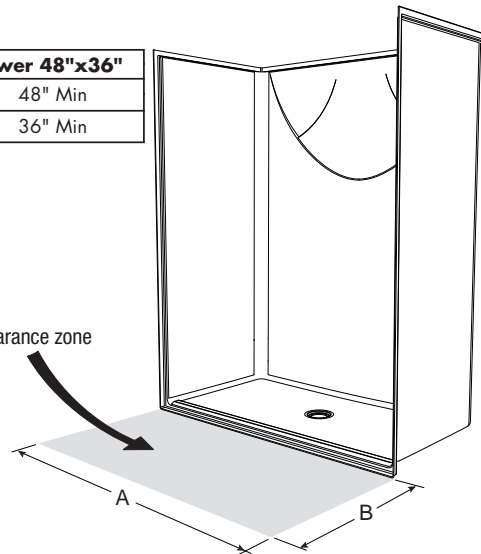
## FRAMING



Shower 48"x36"	
A	48" Min
B	36" Min

A	50 3/4" (1289 mm)
B	39 1/2" (1003 mm)
C	78 3/4" (2000 mm)
D	19 1/2" (495 mm)
E	25 3/8" (645 mm)

Clearance zone



## INSTALLATION WARNING

Due to possible water leaks between the lip of the shower and the curtain, MAAX recommends the installation of a floor drain outside the unit, in rooms where the units will be installed. All our showers have an inside curb of 1/2" (13mm) height applicable to a transfer type use, precisely for the ADA standards.

**Important:** The finished height of the threshold must comply with the following canadian and american standards;

- Canada: height from 6 mm to 13 mm according to CAN/CSA B651 (Accessible and Usable Buildings and facilities).
- U.S.: 1/2" maximum height according to ADA/ANSI A117.1 (Accessible and Usable Buildings and facilities).

This standard does not apply to tub-showers.

Please fax to:

**MAAX Beauce, Quebec:** 1-800-201-8308

**MAAX Lachine, Quebec:** 1-888-361-2045

**MAAX Armstrong, British Columbia:** 1-888-514-4442