

PEX-0514R

Effective May 5, 2014 • Supercedes PEX-0514 May 5, 2014

Revision Date: April 26, 2016

Prices subject to change without notice.

Visit our website for the most current information

NIBCO® PEX-C Tubing

RED COILS - N1



Figure Number	Material Number	Size	List Price Per Foot	List Price per Coil	Weight/ Foot	Weight/ Coil	Feet/ Pallet	Coils/ Pallet	UPC
NP60	PX40014	1/2" x 100'	0.70	70.00	0.0540	5.40	2,000	20	039923236463
NP60	PX40018	1/2" x 250'	0.70	175.00	0.0540	13.50	2,500	10	039923236470
NP60	PX40019	1/2" x 300'	0.70	210.00	0.0540	16.20	3,000	10	039923271341
NP60	PX40020	1/2" x 500'	0.70	350.00	0.0540	27.00	4,000	8	039923236487
NP60	PX40022	1/2" x 1000'	0.70	700.00	0.0540	54.00	5,000	5	039923236494
NP60	PX40030	3/4" x 100'	1.27	127.00	0.1025	10.25	1,300	13	039923236562
NP60	PX40035	3/4" x 300'	1.27	381.00	0.1025	30.75	2,100	7	039923271358
NP60	PX40038	3/4" x 500'	1.27	635.00	0.1025	51.25	5,000	5	039923236586
NP60	PX40042	1" x 100'	2.72	272.00	0.1670	16.70	800	8	039923236593
NP60	PX40048	1" x 300'	2.72	816.00	0.1670	50.10	900	3	039923236609
NP60	PX40051	1" x 500'	2.72	1,360.00	0.1670	83.50	1,500	3	039923271273

RED STICKS - N1



Figure Number	Material Number	Size	List Price Per Foot	List Price per Stick	Weight/ Foot	Weight/ Stick	Sticks/ Pallet	Sticks/ Bundle	UPC
NP60	PX60012R	1/2" x 5'	0.70	3.50	0.0540	0.27	50	10	039923271235
NP60	PX60013R	1/2" x 10'	0.70	7.00	0.0540	0.54	100	10	039923271242
NP60	PX60014	1/2" x 20'	0.70	14.00	0.0540	1.08	1,000	50	039923271259
NP60	PX60019R	3/4" x 5'	1.27	6.35	0.1025	0.51	50	10	039923236470
NP60	PX60020R	3/4" x 10'	1.27	12.70	0.1025	1.03	100	10	039923271341
NP60	PX60021	3/4" x 20'	1.27	25.40	0.1025	2.05	500	25	039923236487
NP60	PX60026R	1" x 10'	2.72	27.20	0.1670	1.67	50	5	039923236562
NP60	PX60027	1" x 20'	2.72	54.40	0.1670	3.34	300	15	039923236579

NIBCO®
AHEAD OF THE FLOW®

NIBCO INC.
WORLD HEADQUARTERS
WEB: www.nibco.com

1516 MIDDLEBURY STREET
ELKHART, IN 46516-4740
USA

DOMESTIC CUSTOMER SERVICE
PHONE: 800.234.0227
FAX: 800.234.0557

TECHNICAL SERVICE
PHONE: 888.446.4226
FAX: 888.336.4226

INTERNATIONAL OFFICE
PHONE: +1/574.295.3327
FAX: +1/574.295.3455

NIBCO® PEX-C Tubing (Cont.)

BLUE COILS - N1



Figure Number	Material Number	Size	List Price Per Foot	List Price per Coil	Weight/ Foot	Weight/ Coil	Feet/ Pallet	Coils/ Pallet	UPC
NP70	PX60115	1/2" x 25'	0.70	17.50	0.0540	1.35	1,250	50	039923257871
NP70	PX40114	1/2" x 100'	0.70	70.00	0.0540	5.40	2,000	20	039923236616
NP70	PX40118	1/2" x 250'	0.70	175.00	0.0540	13.50	2,500	10	039923236623
NP70	PX40119	1/2" x 300'	0.70	210.00	0.0540	16.20	3,000	10	039923256553
NP70	PX40120	1/2" x 500'	0.70	350.00	0.0540	27.00	4,000	8	039923236630
NP70	PX40122	1/2" x 1000'	0.70	700.00	0.0540	54.00	5,000	5	039923236647
NP70	PX60122	3/4" x 25'	1.27	31.75	0.1025	2.56	1,000	40	039923294296
NP70	PX60124	3/4" x 50'	1.27	63.50	0.1025	5.13	1,250	25	039923257949
NP70	PX40130	3/4" x 100'	1.27	127.00	0.1025	10.25	1,300	13	039923236654
NP70	PX40135	3/4" x 300'	1.27	381.00	0.1025	30.75	2,100	7	039923256621
NP70	PX40138	3/4" x 500'	1.27	635.00	0.1025	51.25	5,000	5	039923236678
NP70	PX40142	1" x 100'	2.72	272.00	0.1670	16.70	800	8	039923236685
NP70	PX40148	1" x 300'	2.72	816.00	0.1670	50.10	900	3	039923236692
NP70	PX40151	1" x 500'	2.72	1,360.00	0.1670	83.50	1,000	2	039923264947

BLUE STICKS - N1



Figure Number	Material Number	Size	List Price Per Foot	List Price per Stick	Weight/ Foot	Weight/ Stick	Sticks/ Pallet	Sticks/ Bundle	UPC
NP70	PX60112R	1/2" x 5'	0.70	3.50	0.0540	0.27	50	10	039923257833
NP70	PX60113R	1/2" x 10'	0.70	7.00	0.0540	0.54	100	10	039923257840
NP70	PX60114	1/2" x 20'	0.70	14.00	0.0540	1.08	1,000	50	039923236852
NP70	PX60119R	3/4" x 5'	1.27	6.35	0.1025	0.51	50	10	039923257895
NP70	PX60120R	3/4" x 10'	1.27	12.70	0.1025	1.03	100	10	039923257901
NP70	PX60121	3/4" x 20'	1.27	25.40	0.1025	2.05	500	25	039923236869
NP70	PX60125R	1" x 5'	2.72	13.60	0.1670	0.84	25	5	039923276827
NP70	PX60117R	1" x 10'	2.72	27.20	0.1670	1.67	50	5	039923276025
NP70	PX60127	1" x 20'	2.72	54.40	0.1670	3.34	300	15	039923236876

NIBCO® PEX-C Tubing (Cont.)

WHITE COILS - N1



Figure Number	Material Number	Size	List Price Per Foot	List Price per Coil	Weight/ Foot	Weight/ Coil	Feet/ Pallet	Coils/ Pallet	UPC
NP80	PX60204	1/4" x 25'	\$ 0.68	\$ 17.00	0.0300	0.75	2,500	100	039923257987
NP80	PX40201	1/4" x 100'	0.68	68.00	0.0300	3.00	4,000	40	039923265036
NP80	PX40203	1/4" x 500'	0.68	340.00	0.0300	15.00	7,500	15	039923256683
NP80	PX60210	3/8" x 50'	0.70	35.00	0.0410	2.05	2,500	50	039923258038
NP80	PX40205	3/8" x 100'	0.70	70.00	0.0410	4.10	3,500	35	039923265050
NP80	PX40210	3/8" x 500'	0.70	350.00	0.0410	20.50	5,000	10	039923236715
NP80	PX40212	3/8" x 1000'	0.70	700.00	0.0410	41.00	6,000	6	039923236722
NP80	PX60217	1/2" x 50'	0.70	35.00	0.0540	2.70	1,500	30	039923258106
NP80	PX40214	1/2" x 100'	0.70	70.00	0.0540	5.40	2,000	20	039923236739
NP80	PX40219	1/2" x 300'	0.70	210.00	0.0540	16.20	3,000	10	039923256751
NP80	PX40220	1/2" x 500'	0.70	350.00	0.0540	27.00	4,000	8	039923236753
NP80	PX40222	1/2" x 1000'	0.70	700.00	0.0540	54.00	5,000	5	039923236760
NP80	PX40230	3/4" x 100'	1.27	127.00	0.1025	10.25	1,300	13	039923236777
NP80	PX40235	3/4" x 300'	1.27	381.00	0.1025	30.75	2,100	7	039923256829
NP80	PX40238	3/4" x 500'	1.27	635.00	0.1025	51.25	5,000	5	039923236791
NP80	PX40242	1" x 100'	2.72	272.00	0.1670	16.70	800	8	039923236807
NP80	PX40248	1" x 300'	2.72	816.00	0.1670	50.10	1,500	5	039923236814
NP80	PX40251	1" x 500'	2.72	1,360.00	0.1670	83.50	1,000	2	039923235299
NP80	PX40254	1-1/4" x 100'	4.61	461.00	0.2530	25.30	800	8	039923265074
NP80	PX40255	1-1/4" x 250'	4.61	1,152.50	0.2530	63.25	1,000	4	039923265081

WHITE STICKS - N1

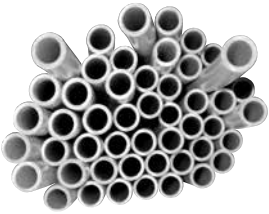


Figure Number	Material Number	Size	List Price Per Foot	List Price per Stick	Weight/ Foot	Weight/ Stick	Sticks/ Pallet	Sticks/ Bundle	UPC
NP80	PX60201	1/4" x 5'	\$ 0.68	\$ 3.40	0.0300	0.15	250	50	039923257963
NP80	PX60202	1/4" x 10'	0.68	6.80	0.0300	0.30	500	50	039923257970
NP80	PX60203	1/4" x 20'	0.68	13.60	0.0300	0.60	1,000	50	039923265029
NP80	PX60206	3/8" x 5'	0.70	3.50	0.0410	2.05	250	50	039923258007
NP80	PX60207	3/8" x 10'	0.70	7.00	0.0410	0.41	500	50	039923258014
NP80	PX60208	3/8" x 20'	0.70	14.00	0.4100	8.20	1,000	50	039923265043
NP80	PX60212	1/2" x 5'	0.70	3.50	0.0540	0.27	250	50	039923258045
NP80	PX60213	1/2" x 10'	0.70	7.00	0.0540	0.54	500	50	039923258052
NP80	PX60214	1/2" x 20'	0.70	14.00	0.0540	1.08	1,000	50	039923236883
NP80	PX60219	3/4" x 5'	1.27	6.35	0.1025	0.51	125	25	039923258113
NP80	PX60220	3/4" x 10'	1.27	12.70	0.1025	1.03	250	25	039923258120
NP80	PX60221	3/4" x 20'	1.27	25.40	0.1025	2.05	500	25	039923236890
NP80	PX60226R	1" x 10'	2.72	27.20	0.1670	1.67	50	5	039923258199
NP80	PX60227	1" x 20'	2.72	54.40	0.1670	3.34	300	15	039923236906
NP80	PX60231	1-1/4" x 20'	4.61	92.20	0.2530	5.06	200	10	039923265067

NIBCO® PEX-C Tubing (Cont.)

TERRA COTTA COILS - N1



Figure Number	Material Number	Size	List Price Per Foot	List Price per Coil	Weight/ Foot	Weight/ Coil	Feet/ Pallet	Coils/ Pallet	UPC
NP65	PX60509	3/8" x 25'	0.70	17.50	0.0410	1.03	1,750	70	039923258465
NP65	PX40508	3/8" x 300'	0.70	210.00	0.0410	12.30	3,000	10	039923256973
NP65	PX40510	3/8" x 500'	0.70	350.00	0.0410	20.50	5,000	10	039923264886
NP65	PX60515	1/2" x 25'	0.70	17.50	0.0540	1.35	1,250	50	039923258557
NP65	PX40514	1/2" x 100'	0.70	70.00	0.0540	5.40	2,000	20	039923264749
NP65	PX40518	1/2" x 250'	0.70	175.00	0.0540	13.50	2,500	10	039923264756
NP65	PX40519	1/2" x 300'	0.70	210.00	0.0540	16.20	3,000	10	039923257079
NP65	PX40520	1/2" x 500'	0.70	350.00	0.0540	27.00	4,000	8	039923264763
NP65	PX60522	3/4" x 25'	1.27	31.75	0.1025	2.56	1,000	40	039923258649
NP65	PX40530	3/4" x 100'	1.27	127.00	0.1025	10.25	1,300	13	039923264817
NP65	PX40534	3/4" x 250'	1.27	317.50	0.1025	25.63	2,250	9	039923264824
NP65	PX60528	1" x 25'	2.72	68.00	0.1670	4.18	625	25	039923258694
NP65	PX60530	1" x 50'	2.72	136.00	0.1670	8.35	750	15	039923258700
NP65	PX40542	1" x 100'	2.72	272.00	0.1670	16.70	800	8	039923264701
NP65	PX40544	1" x 150'	2.72	408.00	0.1670	25.05	900	6	039923257321
NP65	PX40548	1" x 300'	2.72	816.00	0.1670	50.10	900	3	039923257352



TERRA COTTA STICKS - N1

Figure Number	Material Number	Size	List Price Per Foot	List Price per Stick	Weight/ Foot	Weight/ Stick	Sticks/ Pallet	Sticks/ Bundle	UPC
NP65	PX60506	3/8" x 5'	0.70	3.50	0.0410	0.21	250	50	039923258441
NP65	PX60512R	1/2" x 5'	0.70	3.50	0.0540	0.27	50	10	039923258496
NP65	PX60513R	1/2" x 10'	0.70	7.00	0.0540	0.54	100	10	039923258502
NP65	PX60514	1/2" x 20'	0.70	14.00	0.0540	1.08	1,000	50	039923264732
NP65	PX60519R	3/4" x 5'	1.27	6.35	0.1025	0.51	50	10	039923258588
NP65	PX60520R	3/4" x 10'	1.27	12.70	0.1025	1.03	100	10	039923258595
NP65	PX60521	3/4" x 20'	1.27	25.40	0.1025	2.05	500	25	039923264800
NP65	PX60525	1" x 5'	2.72	13.60	0.1670	0.84	25	5	039923258663
NP65	PX60526	1" x 10'	2.72	27.20	0.1670	1.67	150	15	039923258670
NP65	PX60527	1" x 20'	2.72	54.40	0.1670	3.34	300	15	039923264695



NIBCO® PEX Spools

PEX SPOOLS - N1

Figure Number	Material Number	Size/Description	List Price Per Foot	List Price per Spool	Weight/ Foot	Weight/ Spool	UPC
NP60	PX40019SP	1/2" x 300' RED	0.83	249.00	0.0540	16.20	039923256492
NP70	PX40119SP	1/2" x 300' BLUE	0.83	249.00	0.0540	16.20	039923256560

NIBCO® PEX Tubing (Cont.)

BARRIER-PEX COILS - N4



Figure Number	Material Number	Size	List Price Per Foot	List Price per Coil	Weight/ Foot	Weight/ Coil	Feet/ Pallet	Coils/ Pallet	UPC
NP75	PX50014	1/2" x 100'	\$ 0.98	\$ 98.00	0.0540	5.40	2,000	20	039923264497
NP75	PX50018	1/2" x 250'	0.98	245.00	0.0540	13.50	2,500	10	039923264572
NP75	PX50019	1/2" x 300'	0.98	294.00	0.0540	16.20	3,000	10	039923264503
NP75	PX50020	1/2" x 500'	0.98	490.00	0.0540	27.00	4,000	8	039923264688
NP75	PX50021	1/2" x 600'	0.98	588.00	0.0540	32.40	4,200	7	039923264510
NP75	PX50022	1/2" x 1000'	0.98	980.00	0.0540	54.00	3,000	3	039923264534
NP75	PX50023	1/2" x 1200'	0.98	1,176.00	0.0540	64.80	2,400	2	039923264527
NP75	PX50029	5/8" x 100'	1.42	142.00	0.0760	7.60	2,000	20	039923297990
NP75	PX50024	5/8" x 250'	1.42	355.00	0.0760	19.00	2,500	10	039923264565
NP75	PX50025	5/8" x 300'	1.42	426.00	0.0760	22.80	3,000	10	039923257635
NP75	PX50026	5/8" x 500'	1.42	710.00	0.0760	38.00	3,500	7	039923264541
NP75	PX50028	5/8" x 1000'	1.42	1,420.00	0.0760	76.00	3,000	3	039923264558
NP75	PX50030	3/4" x 100'	1.77	177.00	0.1025	10.25	1,300	13	039923264589
NP75	PX50034	3/4" x 250'	1.77	442.50	0.1025	25.63	2,250	9	039923264626
NP75	PX50035	3/4" x 300'	1.77	531.00	0.1025	30.75	2,100	7	039923264596
NP75	PX50038	3/4" x 500'	1.77	885.00	0.1025	51.25	5,000	5	039923264602
NP75	PX50039	3/4" x 600'	1.77	1,062.00	0.1025	61.50	1,800	3	039923264619
NP75	PX50040	3/4" x 1000'	1.77	1,770.00	0.1025	102.50	2,000	2	039923257666
NP75	PX50041	3/4" x 1200'	1.77	2,124.00	0.1025	122.76	2,400	2	039923257673
NP75	PX50042	1" x 100'	2.89	289.00	0.1670	16.70	1,000	10	039923264466
NP75	PX50048	1" x 300'	2.89	867.00	0.1670	50.10	900	3	039923264473
NP75	PX50051	1" x 500'	2.89	1,445.00	0.1670	83.50	1,000	2	039923264480

BARRIER-PEX STICKS - N4



Figure Number	Material Number	Size	List Price Per Foot	List Price per Stick	Weight/ Foot	Weight/ Stick	Sticks/ Pallet	Sticks/ Bundle	UPC
NP75	PX50076	1/2" x 5'	0.98	4.90	0.0535	0.27	125	25	039923313188
NP75	PX50068	1/2" x 20'	0.98	19.60	0.0535	1.07	500	25	039923293374
NP75	PX50071	3/4" x 5'	1.77	8.85	0.1023	0.51	50	10	039923313195
NP75	PX50069	3/4" x 20'	1.77	35.40	0.1023	2.05	200	10	039923293398
NP75	PX50073	1" x 5'	2.89	14.45	0.1750	0.88	25	5	039923313201
NP75	PX50064	1" x 20'	2.89	57.80	0.1750	3.50	100	5	039923264459

*Weighted average lead content ≤ 0.25%



NIBCO® PEX-C Tubing - N1 (Cont.)

WHITE ICEMAKER TUBING

Figure Number	Material Number	Size	List Price Per Foot	List Price per Coil	Weight/Foot	Weight/Coil	Feet/Pallet	Coils/Pallet	UPC
NP80	PX40700	1/8" x 100'	\$ 0.46	\$ 46.00	0.0300	0.88	2,500	25	039923264244



NIBCO® PEX Risers - N1

PEX LAV & CLOSET TUBES

Figure Number	Material Number	Description	List Price	Weight	Box Quantity	Master Ctn Qty	UPC
NP45F	PX01212	3/8" OD x 20" PEX Lav Tube w/Ferrule	\$ 1.87	0.0460	50	50	039923242730
NP45	PX01222	3/8" OD x 30" PEX Lav Tube w/Ferrule	2.37	0.0690	50	50	039923242747
NP45F	PX01232	3/8" OD x 36" PEX Lav Tube w/Ferrule	2.80	0.0830	50	50	039923242754
NP46F	PX01242	3/8" OD x 12" Closet Tube w/Ferrule	1.58	0.0280	50	50	039923242761
NP46F	PX01252	3/8" OD x 20" Closet Tube w/Ferrule	1.87	0.0510	50	50	039923242778
NP47	PX01260	3/8" OD Nominal Poly Ferrule	0.16	0.0010	50	3,000	039923232953

NIBCO® PEX-C Insulated Tubing - N1

INSULATED TUBING



Figure Number	Material Number	Size	List Price Per Foot	List Price per Coil	Weight/Foot(Ea.)	Weight/Coil	Feet/Pallet	Coils/Pallet	UPC
NP90	PX41010	2 x 1" x 75' Insulated PEX Terra Cotta & Blue	\$ 25.33	\$ 1,899.75	0.8000	60.00	75	1	039923333711
NP90	PX41015	2 x 1" x 100' Insulated PEX Terra Cotta & Blue	25.33	2,533.00	0.8000	80.00	100	1	039923333728
NP90	PX41020	2 x 1" x 125' Insulated PEX Terra Cotta & Blue	25.33	3,166.25	0.8000	100.00	125	1	039923333735
NP90	PX41025	2 x 1" x 150' Insulated PEX Terra Cotta & Blue	25.33	3,799.50	0.8000	120.00	150	1	039923333742

NIBCO® PEX-C Insulated Tubing Accessories - N9

INSULATED TUBING ACCESSORIES



Figure Number	Material Number	Description	List Price	Weight	Box Quantity	Master Ctn Qty	UPC
NP90CAP	PX41005	Insulated PEX End Cap 2 x 1"	\$ 24.47	0.4000	1	25	039923333759

*Weighted average lead content ≤ 0.25%

NIBCO® PEX-B Tubing

RED COILS - N1



Figure Number	Material Number	Size	List Price Per Foot	List Price per Stick	Weight/Foot	Weight/Stick	Sticks/Pallet	Sticks/Bundle	UPC
PR60	PG40014	1/2 x 100	\$ 0.70	\$ 70.00	0.0540	5.40	2,000	20	039923236463
PR60	PG40018	1/2 x 250	0.70	175.00	0.0540	13.50	2,500	10	039923236470
PR60	PG40019	1/2 x 300	0.70	210.00	0.0540	16.20	3,000	10	039923271341
PR60	PG40020	1/2 x 500	0.70	350.00	0.0540	27.00	4,000	8	039923236487
PR60	PG40022	1/2 x 1000	0.70	700.00	0.0540	54.00	3,000	3	039923236494
PR60	PG40030	3/4 x 100	1.27	127.00	0.1025	10.25	1,300	13	039923236562
PR60	PG40034	3/4 x 250	1.27	317.50	0.1025	25.63	2,250	9	039923371416
PR60	PG40035	3/4 x 300	1.27	381.00	0.1025	30.75	2,100	7	039923271358
PR60	PG40038	3/4 x 500	1.27	635.00	0.1025	51.25	2,000	4	039923236586
PR60	PG40042	1 x 100	2.72	272.00	0.1670	16.70	800	8	039923236593
PR60	PG40048	1 x 300	2.72	816.00	0.1670	50.10	900	3	039923236609
PR60	PG40051	1 x 500	2.72	1,360.00	0.1670	83.50	1,500	3	039923271273

RED STICKS - N1



Figure Number	Material Number	Size	List Price Per Foot	List Price per Coil	Weight/Foot	Weight/Coil	Feet/Pallet	Coils/Pallet	UPC
PR60	PG60014	1/2 x 20	\$ 0.70	\$ 14.00	0.0540	1.08	1,000	50	039923236821
PR60	PG60021	3/4 x 20	1.27	25.40	0.1025	2.05	500	25	039923236838
PR60	PG60027	1 x 20	2.72	54.40	0.1670	3.34	300	15	039923236845

WHITE COILS - N1



Figure Number	Material Number	Size	List Price Per Foot	List Price per Coil	Weight/Foot	Weight/Coil	Feet/Pallet	Coils/Pallet	UPC
PR80	PG40214	1/2 x 100	\$ 0.70	\$ 70.00	0.0540	5.40	2,000	20	039923236739
PR80	PG40219	1/2 x 300	0.70	210.00	0.0540	16.20	3,000	10	039923256751
PR80	PG40220	1/2 x 500	0.70	350.00	0.0540	27.00	4,000	8	039923236753
PR80	PG40222	1/2 x 1000	0.70	700.00	0.0540	54.00	5,000	3	039923236760
PR80	PG40230	3/4 x 100	1.27	127.00	0.1025	10.25	1,300	13	039923236777
PR80	PG40235	3/4 x 300	1.27	381.00	0.1025	30.75	2,100	7	039923256829
PR80	PG40238	3/4 x 500	1.27	635.00	0.1025	51.25	2,500	4	039923236791
PR80	PG40242	1 x 100	2.72	272.00	0.1670	16.70	800	8	039923236807
PR80	PG40248	1 x 300	2.72	816.00	0.1670	50.10	1,500	5	039923236814
PR80	PG40251	1 x 500	2.72	1,360.00	0.1670	83.50	1,000	2	039923235299
PR80	PG40254	1-1/4 x 100	4.61	461.00	0.2530	25.30	800	8	039923265074
PR80	PG40255	1-1/4 x 250	4.61	1,152.50	0.2530	63.25	1,000	4	039923265081

WHITE STICKS - N1



Figure Number	Material Number	Size	List Price Per Foot	List Price per Stick	Weight/Foot	Weight/Stick	Sticks/Pallet	Sticks/Bundle	UPC
PR80	PG60214	1/2 x 20	\$ 0.70	\$ 14.00	0.0540	1.08	1,000	50	039923236883
PR80	PG60221	3/4 x 20	1.27	25.40	0.1025	2.05	500	25	039923236890
PR80	PG60227	1 x 20	2.72	54.40	0.1670	3.34	300	15	039923236906
PR80	PG60231	1-1/4 x 20	4.61	92.20	0.2530	5.06	200	10	039923265067

*Weighted average lead content ≤ 0.25%

NIBCO® PEX-B Tubing (Cont.)

BLUE COILS - N1



Figure Number	Material Number	Size	List Price Per Foot	List Price per Coil	Weight/Foot	Weight/Coil	Feet/Pallet	Coils/Pallet	UPC
PR70	PG40114	1/2 x 100	\$ 0.70	\$ 70.00	0.0540	5.40	2,000	20	039923236616
PR70	PG40118	1/2 x 250	0.70	175.00	0.0540	13.50	2,500	10	039923236623
PR70	PG40119	1/2 x 300	0.70	210.00	0.0540	16.20	3,000	10	039923256553
PR70	PG40120	1/2 x 500	0.70	350.00	0.0540	27.00	4,000	8	039923236630
PR70	PG40122	1/2 x 1000	0.70	700.00	0.0540	54.00	3,000	3	039923236647
PR70	PG40130	3/4 x 100	1.27	127.00	0.1025	10.25	1,300	13	039923236654
PR70	PG40135	3/4 x 300	1.27	381.00	0.1025	30.75	2,100	7	039923256621
PR70	PG40138	3/4 x 500	1.27	635.00	0.1025	51.25	2,000	4	039923236678
PR70	PG40142	1 x 100	2.72	272.00	0.1670	16.70	800	8	039923236685
PR70	PG40148	1 x 300	2.72	816.00	0.1670	50.10	900	3	039923236692
PR70	PG40151	1 x 500	2.72	1,360.00	0.1670	83.50	1,000	2	039923264947

BLUE STICKS - N1



Figure Number	Material Number	Size	List Price Per Foot	List Price per Stick	Weight/Foot	Weight/Stick	Sticks/Pallet	Sticks/Bundle	UPC
PR70	PG60114	1/2 x 20	\$ 0.70	\$ 14.00	0.0540	1.08	1,000	50	039923236852
PR70	PG60121	3/4 x 20	1.27	25.40	0.1025	2.05	500	25	039923236869
PR70	PG60127	1 x 20	2.72	54.40	0.1670	3.34	300	15	039923236876

*Weighted average lead content ≤ 0.25%

NIBCO® PEX Metal Insert Fittings

PEX LEAD-FREE* BRONZE INSERT COUPLINGS - N2



Figure Number	Material Number	Size	List Price Each	Weight	Bag Quantity	Master Ctn Qty	UPC
NP01-LF	PX80521A	1/2"	\$ 2.40	0.0260	50	1,000	039923364012
NP01R-LF	PX80540A	3/4" x 1/2"	4.27	0.0410	25	500	039923364029
NP01-LF	PX80550A	3/4"	3.64	0.0440	25	500	039923364036
NP01R-LF	PX80560E	1" x 3/4"	6.57	0.0720	15	120	039923300249
NP01-LF	PX80570A	1"	6.75	0.0810	15	120	039923364050
NP01R-LF	PX80590E	1-1/4" x 3/4"	15.99	0.0950	10	80	039923325754
NP01R-LF	PX80600X	1-1/4" x 1"	16.16	0.1260	10	80	039923357175
NP01-LF	PX80580E	1-1/4"	15.20	0.1260	25	150	039923325730

PEX LEAD-FREE* BRONZE INSERT ELBOWS - N2



Figure Number	Material Number	Size	List Price Each	Weight	Bag Quantity	Master Ctn Qty	UPC
NP07LF	PX80631A	1/2"	\$ 4.04	0.0350	50	750	039923364111
NP07RLF	PX80640E	3/4" x 1/2"	6.55	0.0660	25	300	039923300287
NP07LF	PX80650E	3/4"	6.35	0.0730	25	300	039923300270
NP07LF	PX80660X	1"	13.35	0.1580	15	150	039923357236
NP07LF	PX80670E	1-1/4"	32.17	0.2730	10	100	039923325785

PEX LEAD-FREE* BRONZE INSERT TEES - N2



Figure Number	Material Number	Size	List Price Each	Weight	Bag Quantity	Master Ctn Qty	UPC
NP11-LF	PX80710X	1/2"	\$ 5.17	0.0790	50	500	039923356451
NP11R-LF	PX80720E	1/2" x 1/2" x 3/4"	9.06	0.0820	25	250	039923300355
NP11R-LF	PX80730E	3/4" x 1/2" x 1/2"	8.15	0.0800	25	250	039923300324
NP11R-LF	PX80740E	3/4" x 1/2" x 3/4"	8.40	0.1110	25	250	039923300331
NP11R-LF	PX80750A	3/4" x 3/4" x 1/2"	8.15	0.0620	25	250	039923364173
NP11-LF	PX80760E	3/4"	8.36	0.0970	25	250	039923300300
NP11-LF	PX80820X	1"	16.18	0.1980	10	120	039923356574
NP11-LF	PX80800E	1" x 1" x 1/2"	18.36	0.1300	15	120	039923325860
NP11R-LF	PX80810E	1" x 1" x 3/4"	14.12	0.1590	15	120	039923300348
NP11-LF	PX80860X	1-1/4"	36.67	0.3550	10	60	039923374424
NP11R-LF	PX80880X	1-1/4" x 1" x 1"	26.45	0.2890	10	60	039923374448
NP11-LF	PX80870E	1-1/4" x 1-1/4" x 1"	34.67	0.2750	10	80	039923325877

*Weighted average lead content ≤ 0.25%

NIBCO® PEX Stub Out Elbows and Adapters



PEX COPPER STUB OUT ELBOWS* - NC

Figure Number	Material Number	Size	List Price Each	Weight	Bag Quantity	Master Ctn Qty	UPC
NP21	PX80950	1/2" PEX Stub Out Elbow (3-1/2" x 8")	\$ 11.93	0.2580		25	039923272942
NP21	PX80960	3/4" PEX Stub Out Elbow (4" x 8")	17.09	0.4120		25	039923272959
NP21S	PX80970	1/2" Stub Out Elbow w/ Sq O Strap (3-1/2" - 8")	17.20	0.0820		25	039923300270
NP21S	PX80990	3/4" Stub Out Elbow w/ Sq O Strap (4" - 8")	31.24	0.4860		25	039923272980

*Not recommended for use with stainless steel clamp



PEX COPPER STRAIGHT STUB OUTS* - NC

Figure Number	Material Number	Size	List Price Each	Weight	Bag Quantity	Master Ctn Qty	UPC
NP43	PX80980	1/2" x 8" PEX Straight Stub Out	\$ 21.03	0.1780	25	1,200	039923232281

*Not recommended for use with stainless steel clamp



PEX LEAD-FREE* BRONZE PEX x SWEAT ELBOW ADAPTERS - N2

Figure Number	Material Number	Size	List Price Each	Weight	Bag Quantity	Master Ctn Qty	UPC
NP22F-LF	PX81030E	3/4" PEX x 3/4" Female Sweat Elbow Adapter	\$ 14.90	0.1080	10	50	039923325921

NIBCO® PEX Adapters



PEX LEAD-FREE* BRONZE PEX x SWEAT ADAPTERS - N2

Figure Number	Material Number	Size	List Price Each	Weight	Bag Quantity	Master Ctn Qty	UPC
NP23-LF	PX81070E	1/2" PEX x 1/2" Male Sweat Adapter	\$ 2.96	0.0350	50	500	039923300386
NP23-LF	PX81090E	3/4" PEX x 3/4" Male Sweat Adapter	5.33	0.0710	25	250	039923300393
NP23-LF	PX81100A	1" PEX x 1" Male Sweat Adapter	11.86	0.1160	15	120	039923357298
NP23F-LF	PX81120E	1/2" PEX x 1/2" Female Sweat Adapter	3.33	0.0430	50	500	039923300409
NP23F-LF	PX01676E	1/2" PEX x 3/4" Female Sweat Adapter	7.89	0.0840	50	500	039923325983
NP23F-LF	PX81130A	3/4" PEX x 3/4" Female Sweat Adapter	6.76	0.0860	25	250	039923364241
NP23F-LF	PX81140E	1" PEX x 1" Female Sweat Adapter	11.25	0.1540	15	120	039923300423

*Weighted average lead content ≤ 0.25%

NIBCO® PEX Adapters (Cont.)

PEX LEAD-FREE* BRONZE PEX x MIP ADAPTERS - N2



Figure Number	Material Number	Size	List Price Each	Weight	Bag Quantity	Master Ctn Qty	UPC
NP25B-LF	PX81190X	1/2" PEX x 1/2" MIP Brass Adapter	\$ 8.54	0.0810	50	500	039923356680
NP25B-LF	PX81200E	1/2" PEX x 3/4" MIP Brass Adapter	9.77	0.1230	25	250	039923300485
NP25B-LF	PX81210E	3/4" PEX x 1/2" MIP Brass Adapter	9.64	0.0930	25	250	039923300461
NP25B-LF	PX81220E	3/4" PEX x 3/4" MIP Brass Adapter	10.34	0.1400	10	300	039923300430
NP25B-LF	PX81240E	1" PEX x 3/4" MIP Brass Adapter	15.99	0.137	15	120	039923326034
NP25B-LF	PX81250E	3/4" PEX x 1" MIP Brass Adapter	21.50	0.209	25	200	039923326010
NP25B-LF	PX81260E	1" PEX x 1" MIP Brass Adapter	15.70	0.2310	15	120	039923300454

PEX LEAD-FREE* BRONZE BARB MIP ELBOWS - N2



Figure Number	Material Number	Size	List Price Each	Weight	Bag Quantity	Master Ctn Qty	UPC
NP25BE-LF	PX81500X	1/2" PEX x 1/2" MIP Elbow	\$ 9.91	0.0990	50	250	039923356888
NP25BE-LF	PX81502E	3/4" PEX x 1/2" MIP Elbow	22.30	0.1900	25	250	039923353290

PEX LEAD-FREE* BRONZE SWIVEL ADAPTERS - N2



Figure Number	Material Number	Size	List Price Each	Weight	Bag Quantity	Master Ctn Qty	UPC
NP26PS-LF	PX81330A	3/8" PEX x Faucet Swivel Adapter Plastic Nut	\$ 7.84	0.0440	25	50	039923364319
NP26PS-LF	PX02345A	1/2" PEX x Faucet Swivel Adapter Plastic Nut	4.41	0.0480	50	500	039923363992
NP26BS-LF	PX81340A	1/2" PEX x 3/4" NPSM Swivel Adapter Brass Nut	15.70	0.1700	25	50	039923364326
NP26BS-LF	PX81360E	3/4" PEX x 3/4" NPSM Swivel Adapter Brass Nut	13.70	0.1490	25	250	039923300515
NP44-LF	PX81380A	1/2" PEX x Closet Swivel Adapter	8.48	0.0620	10	50	039923364340
NP27P-LF	PX02245A	1/2" PEX x Faucet Swivel Elbow	8.81	0.0490	50	250	039923363961

PEX LEAD-FREE* BRONZE FIP NON-SWIVEL ADAPTERS - N2



Figure Number	Material Number	Size	List Price Each	Weight	Bag Quantity	Master Ctn Qty	UPC
NP26B-LF	PX81270X	1/2" x 1/2" FIP Non-Swivel Adapter	\$ 8.26	0.0940	50	250	039923356772
NP26B-LF	PX81280X	1/2" x 3/4" FIP Non-Swivel Adapter	18.18	0.1320	25	250	039923356789
NP26B-LF	PX81300X	3/4" x 3/4" FIP Non-Swivel Adapter	9.92	0.1450	25	250	039923356802
NP26B-LF	PX81305X	3/4" x 1" FIP Non-Swivel Adapter	23.05	0.1500	15	120	039923356895
NP26B-LF	PX81310E	1" x 1" FIP Non-Swivel Adapter	24.55	0.2280	15	120	039923326072
NP26B-LF	PX81313E	1-1/4" x 1" FIP Non-Swivel Adapter	26.90	0.2290	10	80	039923326294

*Weighted average lead content ≤ 0.25%

NIBCO® PEX Miscellaneous Fittings

PEX LEAD-FREE* BRONZE INSERT PLUG - N2



Figure Number	Material Number	Size	List Price Each	Weight	Bag Quantity	Master Ctn Qty	UPC
NP18-LF	PX81450E	1/2"	\$ 2.06	0.0230	50	1,500	039923300362
NP18-LF	PX81460A	3/4"	3.36	0.0350	25	1,000	039923364371
NP18-LF	PX81480E	1"	9.43	0.0710	15	120	039923325907
NP18-LF	PX81470E	1-1/4"	12.00	0.0660	15	120	039923325914

PEX COPPER TUB/SHOWER PRESSURE CONNECTIONS - NC



Figure Number	Material Number	Size	List Price Each	Weight	Bag Quantity	Master Ctn Qty	UPC
NP24A	PX81170	1/2" PEX x 1/2" M Sweat (6x3) Tub/Shw	\$ 7.22	0.2000	25	25	039923266903

*Not recommended for use with stainless steel clamps

PEX LEAD-FREE* BRONZE FIP DROP EAR ELBOWS - N2



Figure Number	Material Number	Size	List Price Each	Weight	Bag Quantity	Master Ctn Qty	UPC
NP28-LF	PX81400E	1/2" PEX x 1/2" FIP Drop Ear Elbow	\$ 15.70	0.1650	25	200	039923300546
NP28-LF	PX81420E	3/4" PEX x 3/4" FIP Drop Ear Elbow	25.05	0.2870	25	100	039923326218

PEX LEAD-FREE* BRONZE TRANSITION FITTINGS - N2



Figure Number	Material Number	Size	List Price Each	Weight	Bag Quantity	Master Ctn Qty	UPC
NP29R-LF	PX02283E	1/2" PEX x 1/2" PB Transition Fitting w/ Rings	\$ 5.26	0.0500	25	250	039923326430
NP29R-LF	PX02293E	3/4" PEX x 3/4" PB Transition Fitting w/ Rings	7.25	0.1000	25	100	039923326454

PEX COMPRESSION FITTINGS - N2

Figure Number	Material Number	Size/Description	List Price Each	Weight	Bag Quantity	Master Ctn Qty	UPC
NP01WT083	PX81610	5/8" PEX Compression Coupling	\$ 17.96	0.1800	10	80	039923271945
NP25WT083	PX81600	5/8" PEX Compression x 3/4" Male Sweat Adapter	12.20	0.1880	10	80	039923271938
NP100SW	PX81650	1/2" PEX Compression Coupling	9.24	0.0300	10	80	039923276575
NP100SWM	PX81640	1/2" PEX Compression x 3/4" Male Sweat Adapter	9.08	0.0300	10	80	039923276568

*Weighted average lead content ≤ 0.25%

NIBCO® PEX Plastic Insert Fittings

Note: If poly fittings come in contact with glues, chemicals, sealers, or solvents; they should be discarded.

PEX POLY INSERT COUPLINGS - N5



Figure Number	Material Number	Size	List Price Each	Weight	Bag Quantity	Master Ctn Qty	UPC
NPD01	PX00508C	3/8"	\$ 0.87	0.0070	50	2500	039923335128
NPD01R	PX00518C	1/2" x 3/8"	0.79	0.0070	50	2000	039923335135
NPD01	PX00528C	1/2"	0.78	0.0070	50	500	039923320933
NPD01R	PX00538C	3/4" x 1/2"	0.99	0.0100	50	500	039923320957
NPD01	PX00548C	3/4"	1.15	0.0120	50	500	039923320971
NPD01R	PX00558C	3/4" x 1"	1.63	0.0500	25	500	039923320988
NPD01	PX00578C	1"	1.89	0.0500	25	500	039923320995

PEX POLY INSERT ELBOWS - N5



Figure Number	Material Number	Size	List Price Each	Weight	Bag Quantity	Master Ctn Qty	UPC
NPD07	PX00588C	1/2"	\$ 0.98	0.0100	50	500	039923321008
NPD07R	PX00598C	3/4" x 1/2"	1.21	0.0200	25	250	039923321015
NPD07	PX00608C	3/4"	1.43	0.0200	25	400	039923321039
NPD07R	PX00612C	1" x 3/4"	2.80	0.0370	25	250	039923364869
NPD07	PX00618C	1"	3.98	0.0500	25	250	039923321053

PEX POLY INSERT TEES - N5



Figure Number	Material Number	Size	List Price Each	Weight	Bag Quantity	Master Ctn Qty	UPC
NPD11	PX00628C	3/8"	\$ 1.21	0.0160	25	1,200	039923335142
NPD11	PX00638C	1/2"	1.26	0.0100	50	500	039923321077
NPD11R	PX00648C	1/2" x 1/2" x 3/4"	1.76	0.0200	25	500	039923321091
NPD11R	PX00658C	3/4" x 1/2" x 1/2"	1.76	0.0200	25	300	039923321114
NPD11R	PX00668C	3/4" x 1/2" x 3/4"	1.76	0.0200	25	400	039923321121
NPD11R	PX00678C	3/4" x 3/4" x 1/2"	1.76	0.0200	25	400	039923321138
NPD11R	PX00698C	3/4" x 3/4" x 1"	3.47	0.0500	25	300	039923336347
NPD11	PX00688C	3/4"	1.80	0.0300	25	300	039923321152
NPD11R	PX00708C	1" x 3/4" x 3/4"	3.86	0.0500	25	250	039923321176
NPD11R	PX00718C	1" x 3/4" X 1"	3.86	0.0500	25	200	039923321190
NPD11R	PX00728C	1" x 1" x 1/2"	3.86	0.0400	25	250	039923321213
NPD11R	PX00738C	1" x 1" x 3/4"	3.86	0.0500	25	250	039923321220
NPD11	PX00748C	1"	4.76	0.0600	25	150	039923321237

PEX POLY INSERT PLUGS* - N5



Figure Number	Material Number	Size	List Price Each	Weight	Bag Quantity	Master Ctn Qty	UPC
NP18P	PX01975C	3/8"	\$ 0.53	0.0060	20	3,000	039923335302
NP18P	PX01980C	1/2"	0.59	0.0060	100	1,000	039923368423
NP18P	PX01990C	3/4"	1.01	0.0130	100	1,000	039923321343
NP18P	PX01995C	1"	1.73	0.1690	25	250	039923321350

*For pressure test only

NIBCO® PEX Plastic Insert Fittings (Cont.)

Note: If poly fittings come in contact with glues, chemicals, sealers, or solvents; they should be discarded.

PEX MALE POLY ADAPTERS - N5



Figure Number	Material Number	Size/Description	List Price Each	Weight	Bag Quantity	Master Ctn Qty	UPC
NPD22	PX01758C	1/2" PEX x 1/2" MIP Poly Adapter	\$ 1.21	0.0200	50	500	039923321244
NPD22	PX01778C	1/2" PEX x 3/4" MIP Poly Adapter	1.63	0.0180	25	700	039923336361
NPD22	PX01788C	3/4" PEX x 1/2" MIP Poly Adapter	1.63	0.0180	25	600	039923336378
NPD22	PX01768C	3/4" PEX x 3/4" MIP Poly Adapter	1.60	0.0200	25	400	039923321251
NPD22	PX01798C	1" PEX x 1" MIP Poly Adapter	3.30	0.0200	25	300	039923336354

PEX MALE POLY ADAPTER ELBOWS - N5

Figure Number	Material Number	Size/Description	List Price Each	Weight	Bag Quantity	Master Ctn Qty	UPC
NPD25BE	PX01948C	1/2" x 3/8" MIP Poly Adapter Elbow	1.56	0.0180	25	900	039923335197
NPD25BE	PX01958C	1/2" x 1/2" MIP Poly Adapter Elbow	1.65	0.0180	50	800	039923336392
NPD25BE	PX01968C	3/4" x 1/2" MIP Poly Adapter Elbow	1.99	0.0180	25	500	039923336415
NPD25BE	PX01978C	3/4" x 3/4" MIP Poly Adapter Elbow	2.22	0.0180	25	400	039923336408
NPD25BE	PX01988C	1" x 3/4" MIP Poly Adapter Elbow	3.39	0.0180	25	500	039923355539

PEX FEMALE POLY SWIVELS - N5



Figure Number	Material Number	Size/Description	List Price Each	Weight	Bag Quantity	Master Ctn Qty	UPC
NPD26	PX02148C	3/8" PEX x 1/2" NPSM Poly Swivel Adapter (Faucet)	\$ 2.52	0.0300	50	600	039923335296
NPD26	PX01888C	1/2" PEX" x 1/2" NPSM Poly Swivel Adapter (Faucet)	2.24	0.0260	25	500	039923321312
NPD26	PX01898C	3/4" PEX x 3/4" NPSM Poly Swivel Adapter	2.53	0.0400	50	500	039923321336
NPD26C	PX02358C	1/2" PEX x 7/8" Poly Swivel Adapter (Closet / Ballcock)	3.65	0.0300	25	400	039923336439
NPD26E	PX02248C	1/2" PEX x 1/2" NPSM Poly Swivel Elbow (Faucet)	2.76	0.0300	10	500	039923321374
NPD26E	PX02348C	3/4" PEX x 3/4" NPSM Poly Swivel Elbow	3.65	0.0300	25	400	039923336439

PEX MULTIPORT TEES - N5



Figure Number	Material Number	Size/Description	List Price Each	Weight	Bag Quantity	Master Ctn Qty	UPC
NPDCMT102	PX30500	3/4" PEX Inlet x (2) 1/2" PEX Ports Closed End	\$ 6.51	0.036	18	18	039923375421
NPDCMT103	PX30501	3/4" PEX Inlet x (3) 1/2" PEX Ports Closed End	8.81	0.054	15	15	039923375438
NPDCMT104	PX30502	3/4" PEX Inlet x (4) 1/2" PEX Ports Closed End	11.18	0.072	12	12	039923375445
NPDCMT106	PX30503	1" PEX Inlet x (6) 1/2" PEX Ports Closed End	20.33	0.143	12	12	039923375469
NPDOMT102	PX30504	3/4" PEX Inlet and Outlet x (2) 1/2" PEX Ports Open	6.99	0.039	18	18	039923375490
NPDOMT103	PX30505	3/4" PEX Inlet and Outlet x (3) 1/2" PEX Ports Open	9.51	0.058	15	15	039923375506
NPDOMT104	PX30506	3/4" PEX Inlet and Outlet x (4) 1/2" PEX Ports Open	11.83	0.076	12	12	039923375513
NPDOMT106	PX30507	3/4" PEX Inlet and Outlet x (6) 1/2" PEX Ports Open	16.84	0.112	12	12	039923375520



PUSH 'N GO® Fittings*

PUSH 'N GO COUPLINGS - N6



Figure Number	Material Number	Size	List Price Each	Weight	Bag Quantity	Master Ctn Qty	UPC
PG01	PX20100	1/2"	\$ 7.22	0.0500	10	500	717796795132
PG01	PX20110	3/4"	10.07	0.0950	10	250	717796795149
PG01F	PX20140	1/2" Female	6.39	0.0500	10	500	717796795736
PG01F	PX20150	3/4" Female	8.99	0.0800	10	300	717796795743
PG01M	PX20120	1/2" Male	5.84	0.0350	10	600	717796795538
PG01M	PX20130	3/4" Male	7.80	0.0650	10	400	717796795545
PG01RS	PX20530	1/2" Stack x 3/8" Reducer	5.89	0.0250	10	600	717796798133
PG01RS	PX20540	3/4" Stack x 1/2" Reducer	8.01	0.0400	10	500	717796798140

PUSH 'N GO ELBOWS - N6



Figure Number	Material Number	Size	List Price Each	Weight	Bag Quantity	Master Ctn Qty	UPC
PG07	PX20200	1/2"	\$ 7.09	0.0600	10	500	717796795330
PG07	PX20210	3/4"	10.88	0.1100	10	200	717796795347
PG07F	PX20230	1/2" Female	6.52	0.0600	10	450	717796795637
PG07M	PX20220	1/2" Male	6.28	0.0400	10	500	717796795439

PUSH 'N GO STACK ELBOWS - N6



Figure Number	Material Number	Size	List Price Each	Weight	Bag Quantity	Master Ctn Qty	UPC
PG07S	PX20420	1/2" Elbow	\$ 6.54	0.0800	10	350	717796796139
PG07S	PX20430	3/4" Elbow	8.45	0.0800	10	250	717796796146

PUSH 'N GO TEES - N6



Figure Number	Material Number	Size	List Price Each	Weight	Bag Quantity	Master Ctn Qty	UPC
PG11	PX20030	1/2" Icemaker Tee (1/2" x 1/2" x 1/4" OD)	\$ 9.03	0.0750	10	300	717796797839
PG11	PX20000	1/2" x 1/2" x 1/2"	9.01	0.0800	10	300	717796795231
PG11R	PX20010	3/4" x 3/4" x 3/4"	14.42	0.1600	10	160	717796795248
PG11R	PX20020	3/4" x 3/4" x 1/2"	13.00	0.1300	10	200	717796797945

PUSH 'N GO STACK TEES - N6



Figure Number	Material Number	Size	List Price Each	Weight	Bag Quantity	Master Ctn Qty	UPC
PG11S	PX20400	1/2" Tee	\$ 7.10	0.0700	10	350	717796795934
PG11S	PX20410	3/4" Tee	11.44	0.1200	10	150	717796795941

*PUSH 'N GO® Fittings are recommended for use with plastic CTS tubing only

PUSH 'N GO® Fittings* (Cont.)

PUSH 'N GO END CAPS - N6



Figure Number	Material Number	Size	List Price Each	Weight	Bag Quantity	Master Ctn Qty	UPC
PG17	PX20501	3/4"	\$ 5.06	0.0300	10	500	717796795842

PUSH 'N GO ADAPTERS - N6



Figure Number	Material Number	Size	List Price Each	Weight	Bag Quantity	Master Ctn Qty	UPC
PG35	PX20300	1/2" Closet Adapter	\$ 6.08	0.0600	10	300	717796796337
PG35E	PX20240	1/2" Closet Adapter	7.07	0.0700	10	400	717796796436
PG36	PX20310	1/2" Garden Hose Adapter Elbow	8.63	0.0550	10	400	717796796535
PG36E	PX20320	1/2" Garden Hose Adapter Elbow	7.43	0.0650	10	300	717796796634

PUSH 'N GO LOCKING CLIPS - N6



Figure Number	Material Number	Size	List Price Each	Weight	Bag Quantity	Master Ctn Qty	UPC
PGLC	PX20550	1/4" Ice maker	\$ 0.45	0.0100	10	1,000	039923244727
PGLC	PX20560	3/8"	0.45	0.0100	100	2,000	039923244734
PGLC	PX20570	1/2"	0.63	0.0100	100	2,000	039923244741
PGLC	PX20580	3/4"	0.63	0.0100	100	3,000	039923244758
PGLC	PX20590	1"	0.75	0.0100	100	—	039923263520

PUSH 'N GO MISCELLANEOUS - N6



Figure Number	Material Number	Size	List Price Each	Weight	Bag Quantity	Master Ctn Qty	UPC
PGV	PX20510	1/2" In-Line Valve	\$ 12.82	0.1050	10	200	717796796238
PG97	PX20520	1/2" In-Line Union	7.03	0.0500	10	300	717796797730

*PUSH 'N GO® Fittings are recommended for use with plastic CTS tubing only

NIBCO® PEX Connections

PEX COPPER CRIMP RINGS - NC



Figure Number	Material Number	Size	List Price Each	Weight	Bag Quantity	Master Ctn Qty	UPC
NP19	PX80905	3/8" Copper Crimp Ring (black)	\$ 0.61	0.0110	25	250	039923267313
NP19	PX80915	1/2" Copper Crimp Ring (black)	0.63	0.0130	100	1,000	039923267320
NP19	PX80925	3/4" Copper Crimp Ring (black)	0.86	0.0170	50	500	039923267337
NP19	PX80935	1" Copper Crimp Ring (black)	1.11	0.0220	50	250	039923267344
NP19	PX80945	1-1/4" Copper Crimp Ring (black)	2.53	0.2530	25	125	039923269829

PEX COPPER CRIMP SLEEVES - NC



Figure Number	Material Number	Size	List Price Each	Weight	Bag Quantity	Master Ctn Qty	UPC
NP19CS	PX80911	1/2" Copper Crimp Sleeve	\$ 1.13	0.0190	50	600	039923320254
NP19CS	PX80921	3/4" Copper Crimp Sleeve	1.55	0.0280	50	500	039923320278
NP19CS	PX80931	1" Copper Crimp Sleeve	2.22	0.0310	50	250	039923320285

PEX STAINLESS STEEL SLEEVES - N2



Figure Number	Material Number	Size	List Price Each	Weight	Bag Quantity	Master Ctn Qty	UPC
NP50	PX02110	1/2" Stainless Steel Sleeve	\$ 0.60	0.0060	50	5,000	039923007766
NP50	PX02120	3/4" Stainless Steel Sleeve	1.00	0.0100	50	2,500	039923234841
NP50	PX02130	1" Stainless Steel Sleeve	1.50	0.0100	50	2,500	039923234858

NIBCO® PEX Home Run Manifold®

PEX 6-PORT - ONE SIDED MANIFOLDS - NB

Figure Number	Material Number	Trunk Size	Description	List Price Ea.	Weight	Trunk Joints		Valves 1/2"
						End 1	End 2	
PM6-A	PX90002	1"	6 Port Manifold	\$ 35.00	0.2600	None	None	No
PM6-LF	PX90003E	1"	6 Port Manifold 1" PEX	61.00	0.4430	1" PEX	1" Plug	No
PM6-LF	PX90004E	1"	6 Port Manifold 3/4" PEX	61.00	0.4370	3/4" PEX	1" Plug	No
PM6-V1-LF	PX90005E	1"	6 Port Manifold 1" PEX w/valves	110.00	0.4570	1" PEX	1" Plug	6
PM6-V1-LF	PX90006E	1"	6 Port Manifold 3/4" PEX w/valves	110.00	1.4510	3/4" PEX	1" Plug	6
PM6-B	PX90069	1"	6 Port Manifold - BULK	29.15	0.3170	None	None	No
PM6-P-LF	PX90067E	1"	6 Port Manifold 1" Plug Ends	54.75	0.7530	1" Plug	1" Plug	No

PEX 12-PORT - ONE SIDED MANIFOLDS - NB

Figure Number	Material Number	Trunk Size	Description	List Price Ea.	Weight	Trunk Joints		Valves 1/2"
						End 1	End 2	
PM12-LF	PX90007E	1"	12 Port Manifold 1" PEX	\$ 98.00	1.2000	1" PEX	1" Plug	No
PM12-LF	PX90008E	1"	12 Port Manifold 3/4" PEX	98.00	1.1900	3/4" PEX	1" Plug	No
PM12-V1-LF	PX90009E	1"	12 Port Manifold 1" PEX w/valves	192.00	3.0720	1" PEX	1" Plug	12
PM12-V1-LF	PX90010E	1"	12 Port Manifold 3/4" PEX w/valves	192.00	3.0620	3/4" PEX	1" Plug	12
PM12-P-LF	PX90068E	1"	12 Port Manifold 1" Plug Ends	95.50	1.4320	1" Plug	1" Plug	No

PEX 8-PORT - TWO SIDED MANIFOLDS - NB

Figure Number	Material Number	Trunk Size	Description	List Price Ea.	Weight	Trunk Joints		Valves 1/2"
						End 1	End 2	
PH8-A	PX90011	1 1/4"	8 Port Manifold	\$ 45.00	0.2580	None	None	No
PH8-LF	PX90012E	1 1/4"	8 Port Manifold	90.00	0.6700	1 1/4" PEX	1 1/4" Plug	No
PH8-LF	PX90013E	1 1/4"	8 Port Manifold	80.00	0.6280	1" PEX	1 1/4" Plug	No
PH8-LF	PX90014E	1 1/4"	8 Port Manifold	80.00	0.6080	3/4" PEX	1 1/4" Plug	No
PH8-V1-LF	PX90015E	1 1/4"	8 Port Manifold w/valves	127.00	2.0220	1 1/4" PEX	1 1/4" Plug	8
PH8-V1-LF	PX90016E	1 1/4"	8 Port Manifold w/valves	127.00	1.9800	1" PEX	1 1/4" Plug	8
PH8-V1-LF	PX90017E	1 1/4"	8 Port Manifold w/valves	127.00	1.9600	3/4" PEX	1 1/4" Plug	8

PEX 16-PORT - TWO SIDED MANIFOLDS - NB

Figure Number	Material Number	Trunk Size	Description	List Price Ea.	Weight	Trunk Joints		Valves 1/2"
						End 1	End 2	
PH16-A	PX90021	1 1/4"	16 Port Manifold	\$ 65.00	0.5160	None	None	No
PH16-LF	PX90022E	1 1/4"	16 Port Manifold	86.00	0.9280	1 1/4" PEX	1 1/4" Plug	No
PH16-LF	PX90023E	1 1/4"	16 Port Manifold	86.00	0.8860	1" PEX	1 1/4" Plug	No
PH16-LF	PX90024E	1 1/4"	16 Port Manifold	86.00	0.8660	3/4" PEX	1 1/4" Plug	No
PH16-LF	PX90088E	1 1/4"	16 Port Manifold 1" FIP	104.00	1.3960	1" FIP	1 1/4" Plug	No
PH16-V1-LF	PX90025E	1 1/4"	16 Port Manifold w/valves	206.38	3.6320	1 1/4" PEX	1 1/4" Plug	16
PH16-V1-LF	PX90026E	1 1/4"	16 Port Manifold w/valves	206.38	3.5900	1" PEX	1 1/4" Plug	16
PH16-V1-LF	PX90027E	1 1/4"	16 Port Manifold w/valves	206.38	3.5700	3/4" PEX	1 1/4" Plug	16

*Weighted average lead content ≤ 0.25%

NIBCO® PEX Home Run Manifold®

PEX 16, 24, 32 & 40-PORT - DUAL TEMPERATURE MANIFOLDS - NB

Figure Number	Material Number	Trunk Size	Description	List Price Ea.	Weight	Trunk Joints		Valves 1/2"
						End 1	End 2	
PH16D-LF	PX90031E	1 1/4"	16 Port DUAL TEMP	\$ 117.00	1.9280	1 1/4" PEX	1 1/4" PEX	No
PH16D-LF	PX90032E	1 1/4"	16 Port DUAL TEMP	117.00	1.4400	1" PEX	1" PEX	No
PH16D-LF	PX90033E	1 1/4"	16 Port DUAL TEMP	117.00	1.3920	3/4" PEX	3/4" PEX	No
PH16D-V1-LF	PX90034E	1 1/4"	16 Port DUAL TEMP w/valves	238.00	3.6320	1 1/4" PEX	1 1/4" PEX	16
PH16D-V1-LF	PX90035E	1 1/4"	16 Port DUAL TEMP w/valves	238.00	3.5900	1" PEX	1" PEX	16
PH16D-V1-LF	PX90036E	1 1/4"	16 Port DUAL TEMP w/valves	238.00	3.5700	3/4" PEX	3/4" PEX	16
PH24D-LF	PX90040E	1 1/4"	24 Port DUAL TEMP	127.00	1.2610	1 1/4" PEX	1 1/4" PEX	No
PH24D-LF	PX90041E	1 1/4"	24 Port DUAL TEMP	127.00	1.2190	1" PEX	1" PEX	No
PH24D-LF	PX90042E	1 1/4"	24 Port DUAL TEMP	127.00	1.1990	3/4" PEX	3/4" PEX	No
PH24D-V1-LF	PX90043E	1 1/4"	24 Port DUAL TEMP w/valves	316.00	5.3170	1 1/4" PEX	1 1/4" PEX	24
PH24D-V1-LF	PX90044E	1 1/4"	24 Port DUAL TEMP w/valves	316.00	5.2750	1" PEX	1" PEX	24
PH24D-V1-LF	PX90045E	1 1/4"	24 Port DUAL TEMP w/valves	316.00	5.2550	3/4" PEX	3/4" PEX	24
PH32D-LF	PX90049E	1 1/4"	32 Port DUAL TEMP	142.50	1.5190	1 1/4" PEX	1 1/4" PEX	No
PH32D-LF	PX90050E	1 1/4"	32 Port DUAL TEMP	142.50	1.4770	1" PEX	1" PEX	No
PH32D-LF	PX90051E	1 1/4"	32 Port DUAL TEMP	142.50	1.4570	3/4" PEX	3/4" PEX	No
PH32D-V1-LF	PX90052E	1 1/4"	32 Port DUAL TEMP w/valves	389.00	6.9270	1 1/4" PEX	1 1/4" PEX	32
PH32D-V1-LF	PX90053E	1 1/4"	32 Port DUAL TEMP w/valves	389.00	6.8850	1" PEX	1" PEX	32
PH32D-V1-LF	PX90054E	1 1/4"	32 Port DUAL TEMP w/valves	389.00	6.8650	3/4" PEX	3/4" PEX	32
PH40D-LF	PX90058E	1 1/4"	40 Port DUAL TEMP	185.75	1.9400	1 1/4" PEX	1 1/4" PEX	No
PH40D-LF	PX90059E	1 1/4"	40 Port DUAL TEMP	185.75	1.8980	1" PEX	1" PEX	No
PH40D-LF	PX90060E	1 1/4"	40 Port DUAL TEMP	185.75	1.8780	3/4" PEX	3/4" PEX	No
PH40D-V1-LF	PX90061E	1 1/4"	40 Port DUAL TEMP w/valves	498.78	8.7000	1 1/4" PEX	1 1/4" PEX	40
PH40D-V1-LF	PX90062E	1 1/4"	40 Port DUAL TEMP w/valves	498.78	8.6580	1" PEX	1" PEX	40
PH40D-V1-LF	PX90063E	1 1/4"	40 Port DUAL TEMP w/valves	498.78	8.6380	3/4" PEX	3/4" PEX	40

HOME RUN MANIFOLD® ACCESSORIES

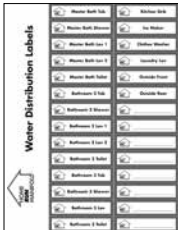


Figure Number	Material Number	Description	List Price Per Foot	Weight	Box Quantity	Master Ctn Qty	UPC
NP200	PX14151	14 x 29 Access Panel	116.30	4.1500	1	10	039923273048
NP200	PX14152	14 x 38 Access Panel	139.72	4.3500	1	10	039923273055
PHSTRAP	PX90080	PH Manifold Stud Strap	2.85	0.0550	50	500	039923310477
PHB	PX90074	PEX Manifold Mounting Clip - 1"	7.50	0.0380	15	15	039923322401
PHB	PX90075	PEX Manifold Mounting Clip - 1 1/4"	7.50	0.0380	15	15	039923322418
PMLC	PX90072	Home Run Manifold Sheet of ID Labels - COLD	0.99	0.0030	100	1000	039923311894
PMLH	PX90073	Home Run Manifold Sheet of ID Labels - HOT	0.99	0.0030	100	1000	039923311917

*Weighted average lead content ≤ 0.25%

NIBCO® PEX Copper Manifolds

PEX BRANCH MANIFOLDS - N8

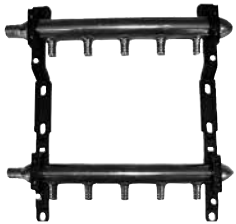


Figure Number	Material Number	Size	List Price Each	Weight	Bag Quantity	Master Ctn Qty	UPC
NP203	PX01000	3 Branch Copper Manifold Open 3/4" x 1/2" Out	\$ 34.68	0.5120		25	039923232083
NP203C	PX01009	3 Branch Copper Manifold Closed 3/4" x 1/2" Out	33.96	0.4520		25	039923232090
NP204	PX01012	4 Branch Copper Manifold Open 3/4" x 1/2" Out	42.53	0.5600		25	039923232106
NP204C	PX01013	4 Branch Copper Manifold Closed 3/4" x 1/2" Out	40.62	0.6580		25	039923232113
NP205	PX01014	5 Branch Copper Manifold Open 3/4" x 1/2" Out	50.55	0.7120		25	039923232120
NP205C	PX01015	5 Branch Copper Manifold Closed 3/4" x 1/2" Out	48.85	0.6800		25	039923232137
NP206C	PX01018	6 Branch Copper Manifold Closed 3/4" x 1/2" Out	51.87	0.8960		25	039923232151
NP208	PX01022	8 Branch Copper Manifold Open 3/4" x 1/2" Out	69.47	1.0080		25	039923232168

PEX BRANCH MANIFOLDS with VALVES - N8



Figure Number	Material Number	Size	List Price Each	Weight	Bag Quantity	Master Ctn Qty	UPC
NP203V	PX01027	3 Branch Manifold w/Valves Open 3/4" x 3/4" x 1/2"	\$ 171.62	1.6000	1	10	039923263032
NP204V	PX01130	4 Branch Manifold w/Valves Open 3/4" x 3/4" x 1/2"	128.18	1.8460	1	10	039923232212
NP204VC	PX01100	4 Branch Manifold w/Valves Closed 3/4" x 3/4" x 1/2"	123.81	1.8040	1	10	039923232182
NP205V	PX01029	5 Branch Manifold w/Valves Open 3/4" x 3/4" x 1/2"	257.25	2.3000	1	10	039923263056



PEX MANIFOLD ACCESSORIES - N7

Figure Number	Material Number	Description	List Price Per Foot	Weight	Box Quantity	Master Ctn Qty	UPC
NPR60A	PX10299	Manifold Bracket	\$ 32.17	0.5000	1	10	039923267597

NIBCO® PEX Valves

PEX LEAD-FREE* BALL VALVES - N3

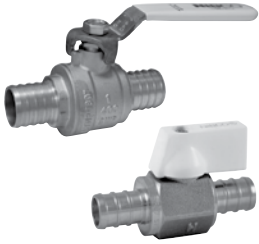


Figure Number	Material Number	Size/Description	List Price Each	Weight	Bag Quantity	Master Ctn Qty	UPC
PXCP400LH-LF	PX01526X	1/2" PEX Brass Ball Valve w/ LH	\$ 18.37	0.2500	18	18	039923357014
PXCP400LH-LF	PX01546X	3/4" PEX Brass Ball Valve w /LH	25.45	0.4100	12	12	039923357021
PXCP400LH-LF	PX01566X	1" PEX Brass Ball Valve w/ LH	44.18	0.5700	6	6	039923357038
NPR50A- LF	PX10297E	1/2" PEX Mini Brass Ball Valve	14.23	0.1600	20	200	039923308481

PEX SUPPLY STOP VALVES



Figure Number	Material Number	Size/Description	List Price Each	Weight	Bag Quantity	Master Ctn Qty	UPC
7160LF	ND618L6	1/2" PEX x 1/2" PEX Straight Supply Stop	For pricing, please see the NIBCO Plumbing Specialty Products (PSP) price sheet.	0.1520	10	10	039923292025
7165LF	ND619L6	1/2" PEX x 3/8" OD Angle Supply Stop		0.1640	10	10	039923291837

NIBCO® PEX Radiant



RADIANT HEAT MANIFOLDS - N7

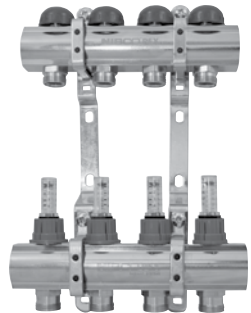


Figure Number	Material Number	Size/Description	List Price Each	Weight	Bag Quantity	Master Ctn Qty	UPC
NR1	PX10502	NR 2 PORT 1" Radiant Heat Manifold	\$ 248.25	7.7000	1	1	039923329035
NR1	PX10503	NR 3 PORT 1" Radiant Heat Manifold	303.70	8.9500	1	1	039923329059
NR1	PX10504	NR 4 PORT 1" Radiant Heat Manifold	376.57	11.1600	1	1	039923329066
NR1	PX10505	NR 5 PORT 1" Radiant Heat Manifold	449.41	12.3700	1	1	039923329073
NR1	PX10506	NR 6 PORT 1" Radiant Heat Manifold	522.28	13.8000	1	1	039923329080
NR1	PX10507	NR 7 PORT 1" Radiant Heat Manifold	595.12	14.7000	1	1	039923329097
NR1	PX10508	NR 8 PORT 1" Radiant Heat Manifold	667.99	15.6700	1	1	039923329110
NR1	PX10509	NR 9 PORT 1" Radiant Heat Manifold	740.83	18.2100	1	1	039923329134
NR1	PX10510	NR 10 PORT 1" Radiant Heat Manifold	813.70	20.1700	1	1	039923329158
NR1	PX10541	NR Valve Set for Manifold 1" FIP Straight	128.23	3.1700	1	1	039923329332
NR1	PX10542	NR Valve Set for Manifold 1" FIP Angle	153.23	2.9420	1	1	039923329349
NR1	PX10552	NR Manifold 1/2" PEX Connector	7.10	0.1280	10	10	039923329417
NR1	PX10554	NR Manifold 5/8" PEX Connector	14.18	0.1280	10	10	039923329431
NR1	PX10546	NR Fill & Purge Set w/ Air Vents	32.38	1.2800	1	1	039923329370
NR1	PX10548	NR Actuator 24VAC NC - 2 Wire	95.00	0.3200	1	1	039923329394

*Weighted average lead content ≤ 0.25%

PEX RADIANT HEAT PANELS - N7

Figure Number	Material Number	Description	List Price Each	Weight	Bag Quantity	Master Ctn Qty	UPC
NPRHP	PX10231	RHP Radiant Heat Panel	\$ 1,833.04	11.8000	1	1	039923267511
NPRHP	PX10232	RHP-1 Radiant Heat Panel	2,383.41	18.4000	1	1	039923268037
NPRHP	PX10233	RHP-2 Radiant Heat Panel	2,756.84	22.4000	1	1	039923268044
NPRHP	PX10234	RHP-2-4 Radiant Heat Panel	3,231.02	25.6500	1	1	039923267535
NPRHP	PX10235	RHP-3 Radiant Heat Panel	5,315.79	43.0500	1	1	039923267528
NPRHP	PX10247	RHP-2-T Radiant Heat Panel	2,871.22	23.0000	1	1	039923294357

PEX RADIANT PARTS & ACCESSORIES FOR PANELS - N7

Figure Number	Material Number	Description	List Price Each	Weight	Bag Quantity	Master Ctn Qty	UPC
NPR310ZV	PX10306	3/4" NPT Zone Valve	\$ 66.54	0.9500	1	10	039923263285
NPR315A	PX10308	Actuator 24 Volt for Zone Valve	107.05	0.3300	1	10	039923264022
NPR120TW	PX10312	FH Thermostat w/Floor Sensor	187.55	0.3500	1	10	039923262233
NPR285T	PX10313	FH Thermostat Only	153.44	0.1120	1	25	039923264053
NPR290TW	PX10314	Floor Sensor	80.08	0.0800	1	25	039923264060
PR180C	PX10246	Zone Kit for RHP 2-4	330.18	1.7000	1	1	039923262219

PEX RADIANT HEAT TRANSFER PLATES - N7

Figure Number	Material Number	Description	List Price Each	Weight	Bag Quantity	Master Ctn Qty	UPC
NPR120TP	PX10251	Rad Trax Easy Install Transfer Plate	11.58	1.700		20	039923263230

PEX RADIANT ACCESSORIES - N7

Figure Number	Material Number	Description	List Price Each	Weight	Bag Quantity	Master Ctn Qty	UPC
NPR10A	PX10296	Thermometer, Strap On	\$ 28.72	0.2500	1	25	039923267559
11032	PX10300R	Basic Radiant DVD/CD-ROM	41.31	0.3000		100	717796110324
NPPP	PX10328	PEX PAL Tube Holder 3/8-3/4	14.74	0.6560	40	1,000	039923319357
NPPPEP	PX10329	PEX PAL END PLATE	10.01	0.1480	10	1,000	039923319364

PEX RADIANT PEX CLIPS - N7

Figure Number	Material Number	Description	List Price Each	Weight	Bag Quantity	Master Ctn Qty	UPC
NPR170C	PX10271	1/2" Pex Clips	0.23	0.0100	100	10,000	039923268006
NPR170C	PX10272	3/4" Pex Clips	0.23	0.3500	100	10,000	039923268013
NPR145C	PX10273	REDDI-STRIP™ Stand Up Staple Gun	910.80	10.9500	1	1	039923267979
NPR150C	PX10274	REDDI-STRIP™ Staples (Box of 200)	66.79	0.6500	1	50	039923267986
NPR146	PX10276	Stand-up PEX Stapler up to 3/4"	722.47	6.7000	1	1	039923293770
NPR147	PX10277	PEX Staples for NPR146 (Box of 300)	56.12	0.0060	300	300	039923293787
NPR305FC	PX71250	1/2" PEX Clips for Styrofoam	0.24	0.0080	25	1,600	039923264107
NPR305WC	PX71251	1/2" PEX Clips for Wire Mesh	0.47	0.0160	25	1,000	039923264114

*REDDI-STRIP™ is a trademark of Peter Mangone, Inc.

*Weighted average lead content ≤ 0.25%

NIBCO® PEX Tools

PEX CRIMP RING TOOLS - COMPACT & STANDARD - N9



Figure Number	Material Number	Description	List Price Each	Weight	Bag Quantity	Master Ctn Qty	UPC
NP32C	PX02505	3/8" Compact Crimp Tool w/gauge (12")	\$ 260.09	2.1000	1	20	039923267900
NP32CH	PX02533	1" Standard PEX Crimp Tool - No Gauge	310.16	3.2500	1	10	039923368669
NP32S	PX02530	1/2" Compact PEX Crimp Tool - No Gauge	245.79	2.0000	1	10	039923292490
NP32C	PX02515	1/2" Compact Crimp Tool w/gauge (12")	260.09	2.0500	1	10	039923315762
NP32C	PX02540	3/4" Compact Crimp Tool w/gauge (12")	260.09	2.0000	1	10	039923344908
NP32LH	PX02545	1-1/4" Crimp Tool w/ Gauge (19")	517.33	6.0000	1	10	039923267931

PEX CRIMP RING TOOLS - ECONOMY CRIMP - N9



Figure Number	Material Number	Description	List Price Each	Weight	Bag Quantity	Master Ctn Qty	UPC
NP32B	PX02555	1/2" & 3/4" Block Combo Crimp Tool	\$ 28.20	0.8500	1	50	039923268440
NP32B	PX02565	3/8" & 1" Block Combo Crimp Tool	28.20	0.9000	10	40	039923268457
NP33C4IN1	PX01385	3/8", 1/2", 3/4" & 1" Block Tool w/Gauge	45.86	1.1500	1	50	039923291907

PEX CRIMP RING TOOLS - COMBO CRIMP - N9



Figure Number	Material Number	Description	List Price Each	Weight	Bag Quantity	Master Ctn Qty	UPC
NP32MH	PX02585	1/2" & 3/4" Combo Mid Handle Crimp Tool	245.79	3.4000	1	12	039923263193

PEX STAINLESS STEEL SLEEVE TOOLS - N9



Figure Number	Material Number	Description	List Price Each	Weight	Bag Quantity	Master Ctn Qty	UPC
NP52	PX01364C	1/2" PEX Sleeve Tool (12")	\$ 292.61	3.0000	1	10	039923365682
NP52C	PX01365	1/2" Compact PEX Sleeve Tool	292.61	2.0000	1	10	039923300195
NP52	PX01366	3/4" PEX Sleeve Tool (12")	292.61	4.0000	1	16	039923232960
NP52	PX01368	1" PEX Sleeve Tool (12")	339.43	4.5000	1	12	039923232892

*Weighted average lead content ≤ 0.25%

NIBCO® PEX Tools *(Cont.)*

PEX OTHER TOOLS & ACCESSORIES - N9

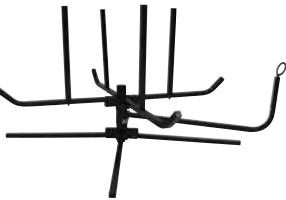


Figure Number	Material Number	Description	List Price Each	Weight	Bag Quantity	Master Ctn Qty	UPC
NP32DC	PX02575	Decrimping Tool For All Size Ring	\$ 107.14	0.6000	1	50	039923267948
NP33RG	PX01355	Clamp Tool Calibration Gauge	8.78	0.2500	1	1	039923241023
NP34	PX01380	1" GO/NO GO GAUGE	23.41	0.2000	1	50	039923232847
NP34	PX01381	1-1/4" GO/NO GAUGE	16.03	0.1000	1		039923267955
NP35	PX01360	1/2" - 3/4" PEX Easy Cut Tool	18.26	0.3000	1	50	039923232823
NP36	PX01400	Easy Cut Tool Replacement Blade	10.53	0.1000	1	50	039923232861
NP35	PX01390	3/8" - 1-1/4" Pipe Cutter	29.26	0.3400	1	50	039923232854
NP37	PX01410	Uncoiler For PEX Coils To 1000' w/Fold Out Case	1,254.69	65.000	1	1	039923232977
NP37	PX01415	Uncoiler For PEX Coils To 1000'	844.32	35.400	1	1	039923267962



PC-4M
9.6V, 1.3 Ah
NiMH Battery

PEX PC-10M ACCESSORIES

Figure Number	Material Number	Description	List Price Each	Weight	Box Quantity	UPC
PC-4M	R00240PC	1.3Ah NiCd 9.6V Battery for PC-100M	For pricing, please see the NIBCO PRESS price sheet.	1.85	1	039923241160
PCX-5M	R00250PC	120V Charger for PC-10M	For pricing, please see the NIBCO PRESS price sheet.	1.13	1	039923241177



PC-5M
120V Battery Charger

*Weighted average lead content ≤ 0.25%

NIBCO® PEX Tools (Cont.)

PEX PC-20M MINI PRESSING TOOL & CRIMP JAWS - NA

Figure Number	Material Number	Description	List Price Each	Weight	Box Quantity	UPC
PCX-200M	R00205PCX	Mini Pressing Tool, 3 Crimp Jaws (1/2", 3/4" & 1"), 1/2", 3/4", & 1" Gauge, 2 - 18V, 1.3 Ah Lithium-ion batteries, 110V charger & case	\$ 2,380.00	18.05	1	039923325716
PCX-1M	R00215PCX	1/2" Crimp Jaw for PC-10M (Includes 1/2", 3/4" & 1" Gauge)	172.00	2.94	1	039923274076
PCX-6M	R00240PCX	5/8" Crimp Jaw for PC-10M (Includes 5/8", 1-1/4" Gauge)	172.00	2.97	1	039923274106
PCX-2M	R00220PCX	3/4" Crimp Jaw for PC-10M (Includes 1/2", 3/4" & 1" Gauge)	172.00	2.90	1	039923274083
PCX-3M	R00230PCX	1" Crimp Jaw for PC-10M (Includes 1/2", 3/4" & 1" Gauge)	172.00	2.92	1	039923274090
PCX-7M	R00250PCX	1-1/4" Crimp Jaw for PC-10M (Includes 5/8", 1-1/4" Gauge)	172.00	3.11	1	039923274113
PC-4ML	R00245PC	18V, 1.3Ah Lithium-ion Battery for PC-20M	For pricing, please see the NIBCO PRESS price sheet	0.80	1	039923316813
PC-7L	R00175PC	18V, 3.0Ah Lithium-ion Battery for PC-20M		1.30	1	039923316790
PC-8L	R00187PC	110V Battery Charger for PC-4ML and PC-7L		2.20	1	039923316820
PC-9L	R00195PC	AC Adapter for PC-20M		1.70	1	039923316837
NP34	PX01388	Go/No Go Crimp Gauge (1/2", 3/4" & 1")	25.00	0.85	1	039923277947
NP34	PX01389	Go/No Go Crimp Gauge (5/8", 1-1/4")	No Match!	0.85	1	039923277954
PC-4M	R00240PC	1.3 Ah NiCd 9.6V Battery for PC-10M	For pricing, please see the NIBCO PRESS	1.85	1	039923241160
PC-5M	R00250PC	120V Charger for PC-10M		1.13	1	039923241177



PCX-200M



PC-4ML
18V, 1.3 Ah
Lithium-ion Battery



PC-8L
110V Battery Charger



PCX-1M
PCX-2M
PCX-3M
PCX-6M
PCX-7M



PC-7L
18V, 3.0 Ah
Lithium-ion Battery



PC-9L
AC Adapter

*Weighted average lead content ≤ 0.25%

NIBCO® PEX Installation Accessories

PEX TUBE TALONS - N9



Figure Number	Material Number	Description	List Price Each	Weight	Bag Quantity	Master Ctn Qty	UPC
NP38	PX02000	3/8" CTS Tube Talon w/Nail	\$ 0.19	0.0080	100	1,000	039923232663
NP38	PX02010	1/2" CTS Tube Talon w/Nail	0.19	0.0110	100	1,000	039923232670
NP38	PX02020	3/4" CTS Tube Talon w/Nail	0.21	0.0160	100	1,000	039923232687
NP38	PX02030	1 CTS Tube Talon w/Nail	0.69	0.0240	50	500	039923232694

PEX INSULATOR CLAMPS - N9



Figure Number	Material Number	Description	List Price Each	Weight	Bag Quantity	Master Ctn Qty	UPC
NP39	PX02040	3/8" Tubing Insulator Clamp	\$ 0.55	0.0210	50	500	039923232700
NP39	PX02050	1/2" Tubing Insulator Clamp	0.49	0.0230	50	500	039923232717
NP39	PX02060	3/4" Tubing Insulator Clamp	0.49	0.0190	50	500	039923232724
NP39	PX02070	1" Tubing Insulator Clamp	0.83	0.0170	25	250	039923232731



Plastic Bend Support



Metal Bend Support

PEX BEND SUPPORTS - N9

Figure Number	Material Number	Description	List Price Each	Weight	Bag Quantity	Master Ctn Qty	UPC
NP40P	PX02083	1/2" PEX Plastic Bend Support	\$ 3.55	0.0800	10	100	039923300164
NP40P	PX02084	3/4" PEX Plastic Bend Support	4.62	0.1600	10	80	039923235022
NP40P	PX02086	1" PEX Plastic Bend Support	3.55	0.2600	5	50	039923347022
NP40	PX02080	1/2" PEX Metal Bend Support	2.77	0.1010		50	039923232748
NP40N	PX02090	1/2" PEX Metal Bend Support w/ Nail Plate	6.24	0.2050		25	039923232755

NIBCO®
AHEAD OF THE FLOW®

NIBCO INC.
WORLD HEADQUARTERS
WEB: www.nibco.com

1516 MIDDLEBURY STREET
ELKHART, IN 46516-4740
USA

DOMESTIC CUSTOMER SERVICE
PHONE: 800.234.0227
FAX: 800.234.0557

TECHNICAL SERVICE
PHONE: 888.446.4226
FAX: 888.336.4226

INTERNATIONAL OFFICE
PHONE: +1/574.295.3327
FAX: +1/574.295.3455