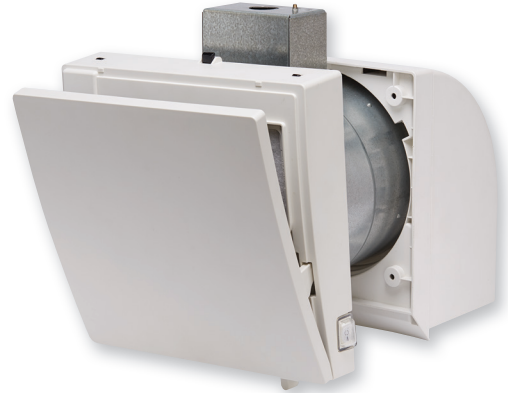


Panasonic

WhisperSupply Wall™ VENTILATION FAN

FV-01WS2
FV-04WS2



- Filtered supply air fan solution to meet ASHRAE 62.2 requirements for make-up/supply air
- Easy installation in new construction or retrofits
- Designed for use in conjunction with furnace blower in Combustion Appliance Zone (CAZ) depressurization situation
- Interior deflector enhances airflow for improved Indoor Air Quality (IAQ)
- FV-01WS2: 10 CFM/On/Off switch
FV-04WS2: 20 CFM/40 CFM/Off switch

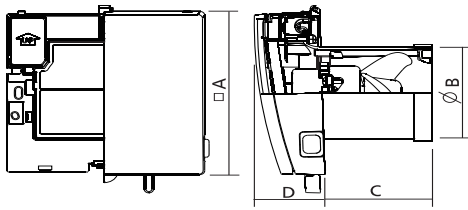
ADDITIONAL BENEFITS

- Can be used to comply with ASHRAE 62.2, LEED, CALGreen and California Title 24
- Merv 8 filter included
- Dual CFM settings on FV-04WS2 model
- Includes interior wall duct and exterior ventilation cap
- 3-year warranty

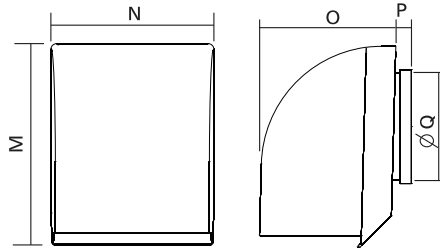
CALGreen

WhisperSupply Wall™ Ventilation Fans

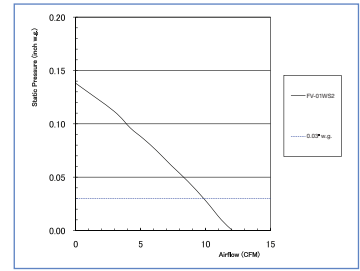
Main Unit



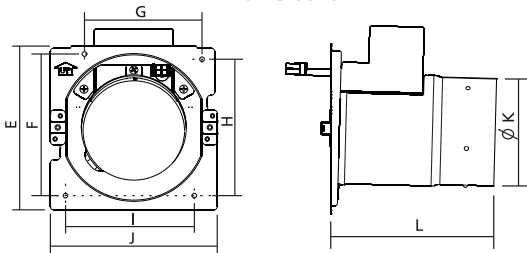
Exterior Hood



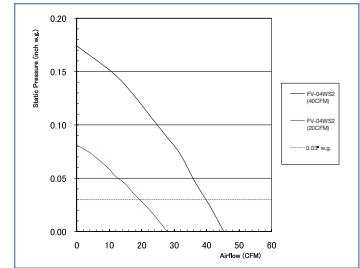
FV-01WS2



Wall Sleeve



FV-04WS2



Unit: inches (mm)

Model	A	B	C	D	E	F	G	H	I	J	K	L	M	N	O	P	Q
FV-01WS2	6-3/4 (171)	3-3/4 (95)	3-3/4 (95)	2-3/16 (56)	6-1/8 (156)	5-5/16 (135)	4-7/16 (113)	5-1/8 (130)	4-1/2 (115)	6-1/4 (159)	3-7/8 (98)	6 (152)	6-7/8 (175)	5-1/2 (140)	4-7/16 (113)	11/16 (17)	3-5/8 (92)
FV-04WS2	8-3/4 (222)	5-9/16 (141)	3-3/4 (95)	2-3/16 (55)	8 (203)	6-7/8 (175)	5-15/16 (151)	6-13/16 (173)	5-13/16 (148)	8-3/16 (208)	5-13/16 (148)	6-3/16 (157)	8-7/16 (214)	7-5/16 (186)	5-1/4 (133)	11/16 (17)	5-5/8 (143)

WhisperSupply Wall™	FV-01WS2		FV-04WS2	
Characteristics (HVI tested data for 0.1" S.P.)	Static Pressure in inches w.g.	0.3	0.3	0.3
	Air Volume (CFM)	10	20	40
	Noise (sones)	<0.3	<0.3	1.2
	Power Consumption (watts)	3	5.2	8.2
	Energy Efficiency (CFM/Watt)	4.7	4.8	5.6
	Speed (RPM)	2662	1738	2559
	Current (amps)	0.03	0.06	0.07
Specifications	Power Rating (V/Hz)	120/60	120/60	
	Motor Type	AC	AC	
	Type of Motor Bearing	Ball	Ball	
	Thermal Fuse Protection	Yes	Yes	
	Blower Wheel Type	Propeller	Propeller	
ENERGY STAR Qualified	No	No		
Installation	Duct Diameter (Inches)	4"	6"	
	Mounting Opening (Inches round)	Interior Wall	5-7/10"	7-1/2"
		Exterior Wall	4-1/2"	6-1/3"
Interior Grille Size (Inches sq.)	6-3/4"	8-3/4"		
Shipping	Gross Weight (lbs)	5.3	6.8	
Approved Code/Standard/ Regulation	UL tub/Shower Enclosure	N/A	N/A	
	Mfg in ISO 9001 Certified Facility	Yes	Yes	



**Panasonic Eco Solutions of North America
Eco Products Division**
Two Riverfront Plaza
Newark, NJ 07102
us.panasonic.com/ventfans

For Order Information
PHONE: 866-292-7299
FAX: 888-553-0723
ventfans@us.panasonic.com