

7160 Madison Round Front Toilet

- Reduce water consumption and save money
One flush performance at 1.6 gpf every time.
- 2" glazed trapway passes a 1-7/8" ball which results in smooth discharges without clogging after each flush.
- Flush valve 2".
- MaP rating Middle Range
- Low profile toilet height of 29-5/16" ideal for retrofit applications.
- Rim Height 15-7/8" with seat on for comfortable use.
- 12" Rough in .
- Vitreous china for easy cleaning.
- Easy installation.
- 2 bolt cap covers.
- Limited 5 year warranty on vitreous china and one year warranty on tank fittings.

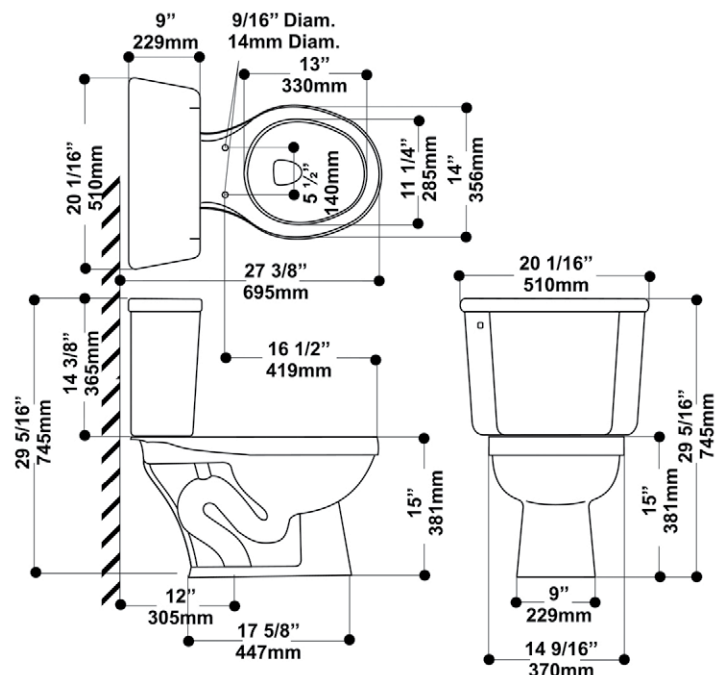
Colors Available: White, Biscuit and Bone

Recommended Seats: Bemis 6900 (closed front, with cover)
Bemis 655C (open front, less cover)

Model Numbers:

- 7160-12" Rough-in (#7 tank, #160 bowl)
- 7161-10" Rough-in (#7 tank, #161 bowl)
- 7164-14" Rough-in (#7 tank, #164 bowl)
- 9160-10" Rough-in (#9 tank, #160 bowl)
- 2160-14" Rough-in (#2 tank, #160 bowl)

Nominal Dimensions: 27-3/8" x 20-1/16" x 29-1/2"



Notes:

- This toilet is designed for a 12" (305 mm) rough installation.
- All fixture dimensions shown are nominal and may vary within industry accepted tolerances established BYASME / CSA Standard.
- Fixture only, seat, cover, and wax ring not included.
- Information and measurements shown are subject to changes or cancellation.
- Peerless Pottery assumes no responsibility or liability for local or state regulations different from federal standards.
- It is the responsibility of the installer to comply with local codes and standards prior to installation of bathroom fixtures.