

ROHL.

Authentic Luxury for Kitchen and Bath®

www.rohlhome.com



LOMBARDIA 5-HOLE DECK MOUNT BATH MIXER WITH C-SPOUT

Modern Bath

A2214LM (Metal Levers)

A2214XM (Cross Handles)

FEATURES

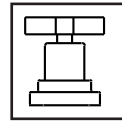
- Fixed spout
- 1/4-turn ceramic valves
- 5 x 1 3/8" cutouts
- 8 37/64" spout reach
- 7 31/64" spout height
- Single-function brass handshower
- 6 1/2' hose, 1/2" NPT connectors
- Matching lav set A2208
- 10-13 GPM at 45 PSI
- Solid brass

COLORS/FINISHES

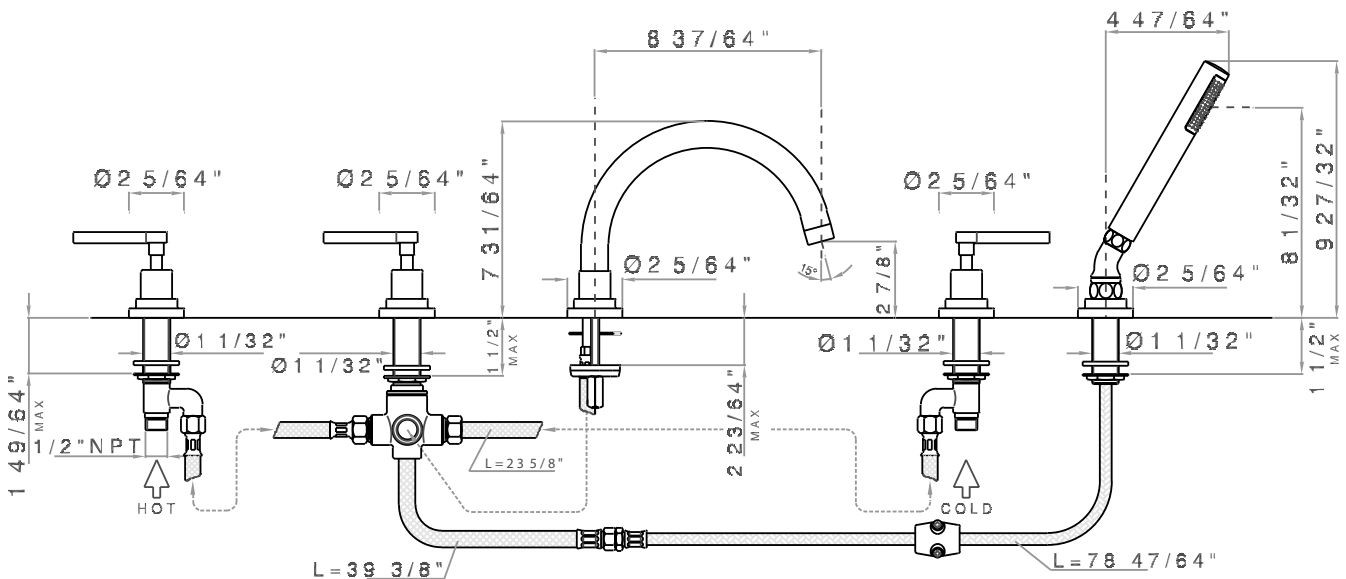
- Polished Chrome
- Polished Nickel
- Satin Nickel

WARRANTY

- Limited Lifetime



XM handle option



A2214 PARTS

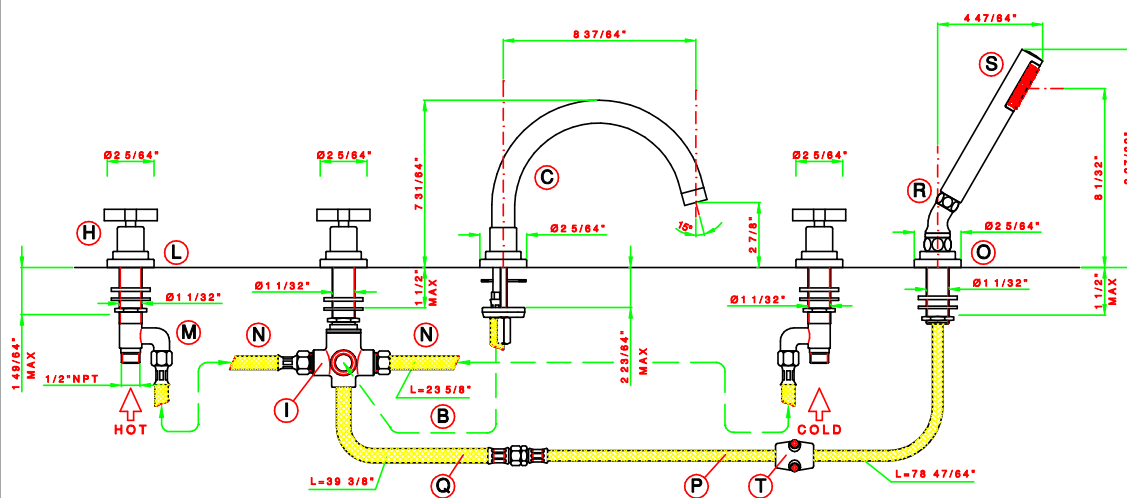
INSTALLATION AND CARE & MAINTENANCE GUIDE

Installation guide

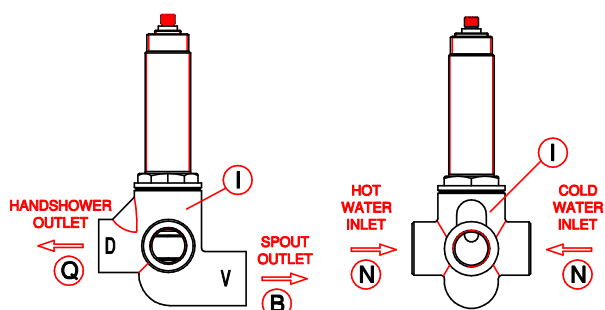
Bath mixer on edge type with 5 holes

Art. A2214XM--

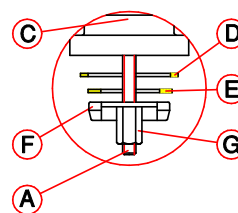
Art. A2214LM--



DIVERTER CONNECTIONS



BASE OF THE SPOUT



INSTALLATION AND CARE & MAINTENANCE GUIDE

INSTALLATION MUST COMPLY WITH LOCAL PLUMBING CODES

a - Preparation

Flush out the pipework to remove any foreign matter.

The hot supply should be on the left when viewed from the front of the fitting.

A2214 PARTS

b – Assembly

- Assemble the threaded pivot (A) and the flexible hoses (B) at the spout (C).
- Introduce the spout (C) in the central hole of the bathtub, placing before the rubber washer (D) between the spout (C) and the bathtub.
- Fix the spout (C) placing, before the shaped rubber washer (E) and then the half-moon plate (F) and the lengthen nut (G).
- Unscrew the handle set (H) and extract. Unscrew the cap (L).
- Assemble the valve body (M), placing before the nut, the metal disc and then the rubber washer.
- Introduce the valve body (M) in the hole of the bathtub and fix it, placing before the cap (L).
- Screwing the handle set (H). ATTENTION: Be sure that the handle has no play.
- Unscrew the cap (L) just to get in touch with the cover valve (H).
- Lock the valve body (M) underside with the brass fixing nut.

A T T E N T I O N

Maximum fixing nut torque value = 10 lbf.ft.

- Repeat this procedure for the cold valve and the diverter (I).
- Connect the side valves (M) to the diverter (I) using the flexible hoses (N).
- Unscrew the fixing kit of the shower holder on both edge (O).
- Introduce the shower holder in the hole of the deck and fix it, placing before the rubber washer and then the metal disk and the nut.
- Connect the nylon flex hose (P) to the stainless steel hose (Q), placing the washer between the two parts.
- Connect the stainless steel hose (Q) to the diverter (I) with the hexagonal nut, placing the washer between the two parts.
- Introduce the other end of hose in the shower holder (O).
- Connect the hose to the curved joint (R), placing the washer between the two parts.
- Connect the hand shower (S) to the curved joint (R), placing the washer between the two parts.
- Assemble counterweight (T) at the nylon flex hose (P).
- Connect hot and cold water supplies to side valve inlet.
- Ensure all connections are firmly tightened.

c – Before use

Turn on the Hot and Cold supplies to the faucet.

Maximum temperature for Hot water supply to the faucet is 145° F.

Minimum recommended pressure is 15 psi – Maximum recommended pressure is 75 psi.

Check the installation carefully for leaks.

If further building work is to be carried out in the vici of the faucet, it should be covered to prevent paint, adhesive, etc. from damaging the surface.

Cleaning

Clean the chromium plated surfaces with soap and water or with mild liquid detergent. Do not use any abrasive cleaners or chloride bleach.

The gold plated or nickel plated surfaces; even if make on thickness way; must be cleaned only with a damp cloth or with a non abrasive and acid fluid very diluted.

Use the same cleaning procedure for all other finishings including satin nickel, inca brass.

WARNING: the use of cleaning products not recommended might irreparably harm the surfaces of the faucets which in such case are not covered by our warranty.

Limescale

The faucet is fitted with an aeration device in the Hot/Cold water outlet.

This may need occasional cleaning especially in hard water areas.

This is accomplished by unscrewing the outlet in a counter clockwise direction, dismantling and leaving the inner screen mesh immersed over night in vinegar or lemon juice.

Do not use chemical descaling liquids for this purpose.

Nicolazzi S.p.A. reserves the propriety of this document, forbidding its total or partial reproduction

A2214 PARTS

