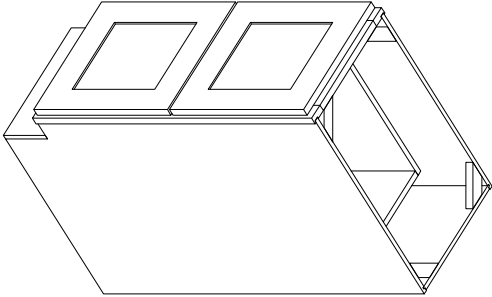






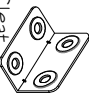

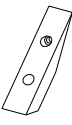

2DB18,2DB21,2DB24,2DB30,2DB36

ASSEMBLY INSTRUCTIONS

- STEP 1: Joint side panel with back panel
STEP 2: Joint bottom panel with side panel
STEP 3: Joint side panel with bottom & back panel
STEP 4: Attach frame on and toekick board
STEP 5: Joint the drawer together, then install the drawer guide.
STEP 6: Attach the wood block on the top corner, and put on the adjustable shelf
STEP 7: Fix drawer head on the drawer front and adjust the cover-space



PARTS LIST		
NO.	Description	QTY
A	BACK PANEL	1
B	SIDE PANEL	2
C	TOP&BOTTOM PANEL	1
D	TOE KICK	1
E	FACE FRAME	1
F	DRAWER BOX FRONT AND BACK	4
G	DRAWER BOX SIDE	4
H	DRAWER BOX BOTTOM	2
I	DRAWER HEAD	2

8	BUMPER	8	
7	1" ROUND HEAD SCREW 8		
6	21" SELF-CLOSE SLIDE	2	
5	9/16" ROUND HEAD SCREW 40		
4	CLEAT	10	
3	1" FLAT HEAD SCREW FOR CARCASS	2	
2	WOOD BLOCK	4	
1	1" FLAT HEAD SCREW FOR WOOD BLOCK	8	
NO.	Description	QTY	PICTURE

