

SB30-ADA,SB36-ADA,VS30-ADA,VS36-ADA

ASSEMBLY INSTUCTIONS

STEP 1: Joint side panel with back panel

STEP 2: Joint bottom panel with side panel

STEP 3: Joint side panel with bottom & back panel

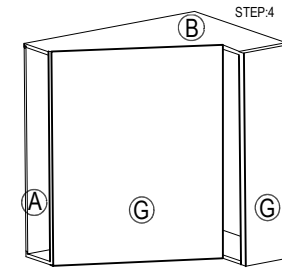
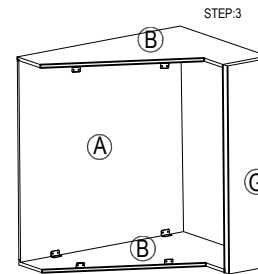
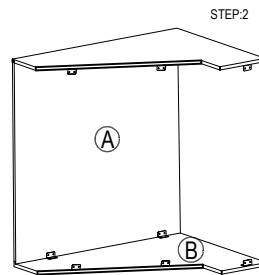
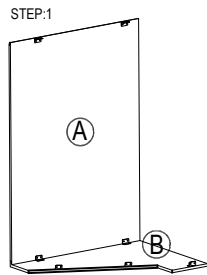
STEP 4: Attach frame on and toekick board

STEP 5: Attach the wood block on the top corner

STEP 6: Fix door&drawer head onto the frame and adjust the cover-space

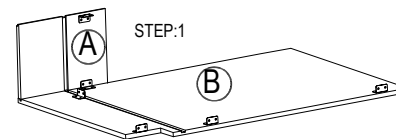
PARTS LIST

NO.	Description	QTY
A	BACK PANEL	1
B	SIDE PANEL	2
C	TOP&BOTTOM PANEL	1
D	TOE KICK	1
E	FACE FRAME	1
F	DRAWER HEAD	2
G	CABINETS DOOR	2

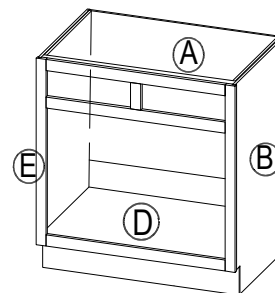
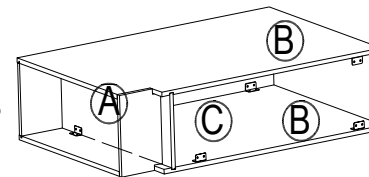


8	SOFTCLOSE HINGE	4	
7	3/4" ROUND HEAD SCREW	4	
6	BUMPER	4	
5	9/16"ROUND HEAD SCREW	84	
4	CLEAT	21	
3	1"FLAT HEAD SCREW FOR CARCASS	4	
2	WOOD BLOCK	4	
1	1" FLAT HEAD SCREW FOR WOOD BLOCK	8	
NO.	Description	QTY	PICTURE

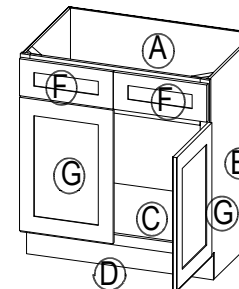
HARDWARE LIST



STEP:3

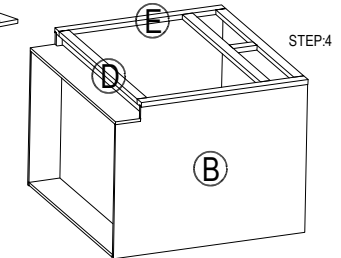
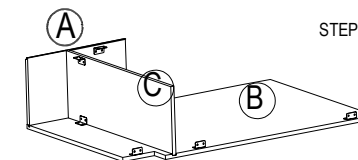


STEP:5



STEP:6

STEP:2



How To Fix Soft Close Hinge

