

**TRIM**

- Brass trim plate and handle
- 6" stainless steel shower arm with 7 function  
4-15/16" ABS showerhead
- Zinc tub spout
- 2.5 gpm
- ADA compliant lever handle

**VALVE**

- Pressure balance shower valve
- Single function
- 1/2" NPT male thread
- Screw stop to adjust water flow rate
- Solid brass material
- Plastic built-in box
- Ceramic cartridge

**Warranty:** Limited Lifetime Residential /  
1-Year Limited Commercial

**SERENITY KIT COLORS**

<input type="checkbox"/>	<b>PC</b> Polished Chrome
<input type="checkbox"/>	<b>BN</b> Brushed Nickel



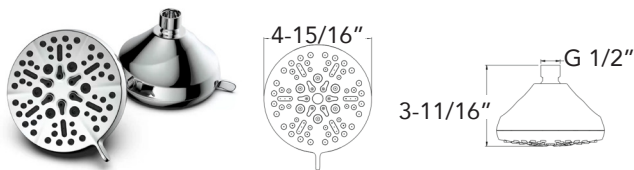
**PC** Polished  
Chrome



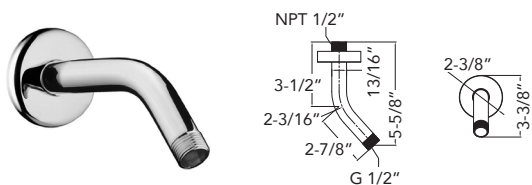
**BN** Brushed  
Nickel

**INCLUDED SHOWER COMPONENTS:**

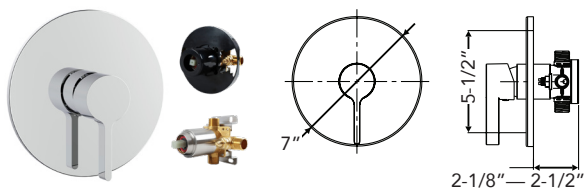
**GREYSON Seven Function Showerhead SMSGSH7F5-**



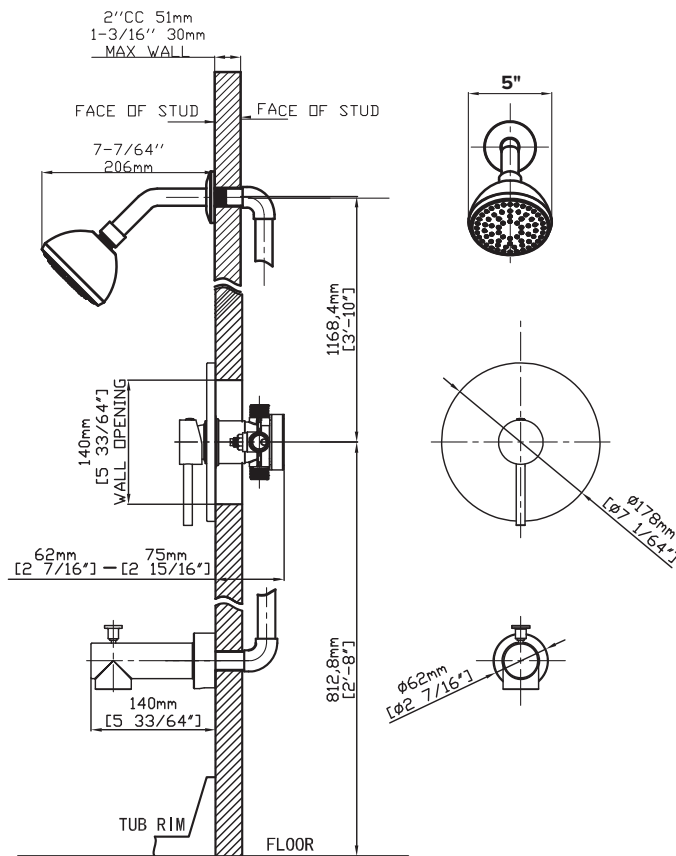
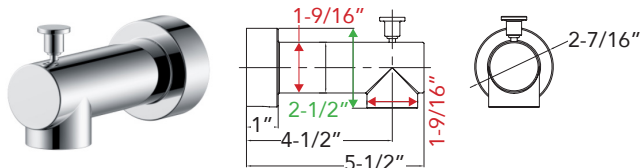
**Basic 6" Shower Arm w/ Round Escutcheon SMBSA6R-**



**THEO Single Function Pressure Balance Valve SMVTP1R-**



**ROWAN Diverting Tub Spout SMRTSD-**



**SERENITY**

**Compliance Certifications-**

**Meet or Exceed the Following Specifications**



Meets the Americans with Disabilities Act guidelines and ANSI A117.1 requirements for accessible and usable building facilities-check local codes when installed per accessibility guidelines of the act.