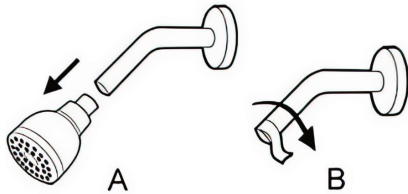


Instruction Manual

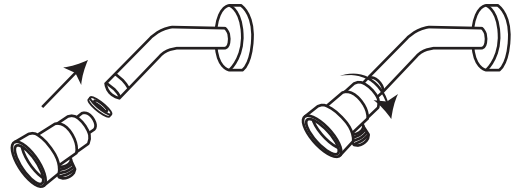
1 PREPARATION (see Fig 1)

- Remove old shower head, pipe tape & washer. Clean the shower arm grooves thoroughly. Use steel wool if necessary.
- Apply the teflon tape over the arm in a clockwise direction



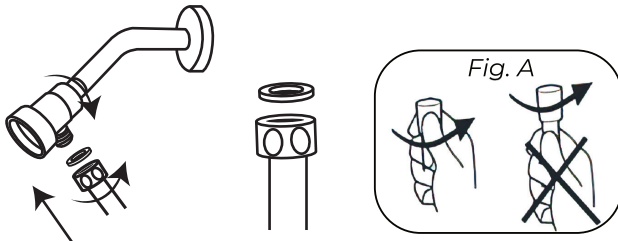
2 CONNECT THE BRACKET (see Fig 2)

- Check that the thick washer with mesh screen is flat and straight inside the supplied adjustable bracket connection nut
 - Tighten the Connection Nut onto the shower arm in a clockwise direction
- WARNING:** Hand-tighten only. Using tools may damage surfaces & washers.



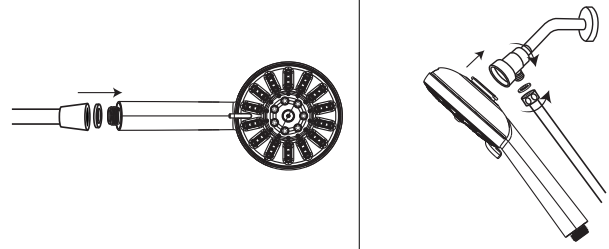
3 CONNECT THE HOSE TO BRACKET (see Fig 3)

Place a rubber washer inside the Hex Nut and connect onto the bracket, hold the bracket and only turn the nut to tighten. Do not turn the hose **(see fig A)**. Before connecting make sure the washer is completely flat. Hand tighten only.



4 CONNECT THE SHOWER HEAD & HOSE (see Fig 4)

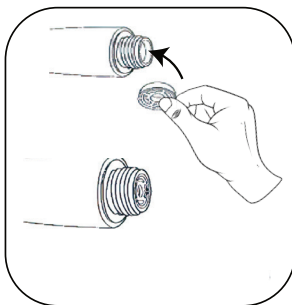
Connect the Shower Head with 1 rubber washer onto the Rounded Conical Hose Nut. Before connecting make sure the washer is completely flat. Hand tighten only.



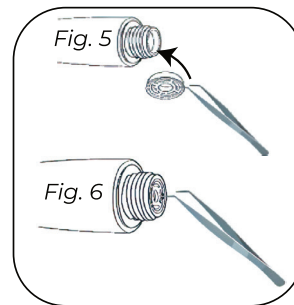
Restrictor:

Flow restrictors are small devices that restrict water flow as mandated by U.S. federal regulations to help conserve water. Users with low water pressure, however can remove or do not add the flow restrictor in hand shower to achieve higher flow rates.

A. Install restrictor, put the restrictor into the handle inlet.



B: Remove restrictor, to increase water pressure, simply take the restrictor out from the shower head handle, see below steps; Carefully pry the restrictor out using a pair of tweezers, a paperclip or a small nail/screw.



SETTINGS: To adjust the angle, loosen the Ball Joint Nut slightly, rotate the holder, then retighten the Ball Joint Nut.

CARE & CLEANING: Regularly clean mineral deposits to maintain a proper spray and to prevent damage.

For minor deposits: Gently massage the nozzles to remove minor deposits.

For major deposits: Remove the shower head and soak nozzles in 1-2 cups of white vinegar for 2-3 hours. Run water to flush out the vinegar.

DO NOT use harsh chemicals or abrasives to clean nozzles as this may cause damage and cancel warranty.