

## FEATURES

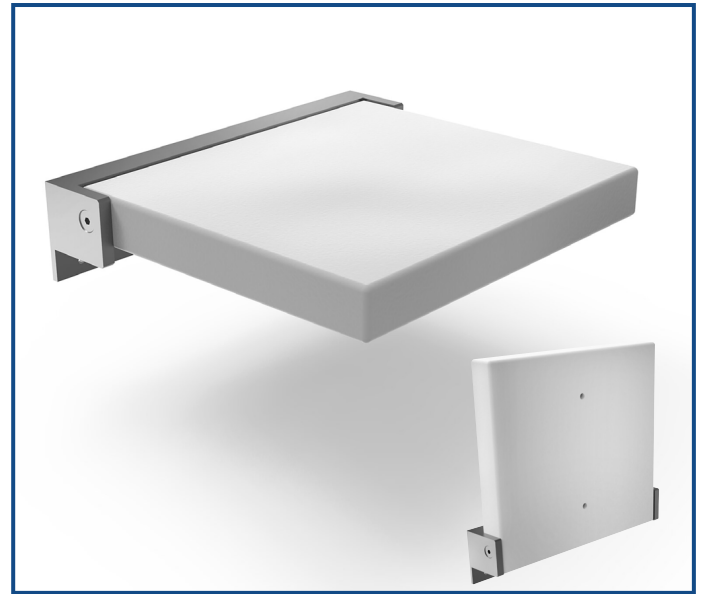
- Foldable Seat
- Seat material is anti-microbial
- Stainless steel mounting bracket for durability
- Holds up to 300 lbs. capacity

## WARRANTY

- Lifetime Limited Warranty for residential use
- 5 Year Limited Warranty for commercial use

## COLOR & FINISHES

- 2 seat colors available: White (01) & Black (09)
- 4 bracket finishes available (See below)



### To Be Specified:

	Model No.	Seat Size W x D x H	Bracket Size W x H	Ship Wt. (lbs)
<input type="checkbox"/>	*SMPPS1414UP-	14" x 13 $\frac{3}{4}$ " x 1 $\frac{3}{4}$ "	15" x 3 $\frac{9}{16}$ "	14
<input type="checkbox"/>	SMPPS1420UP-	20" x 15 $\frac{3}{4}$ " x 1 $\frac{3}{4}$ "	21" x 3 $\frac{9}{16}$ "	18
<input type="checkbox"/>	SMPPS1526UP-	26" x 15" x 1 $\frac{3}{4}$ "	26" x 3 $\frac{9}{16}$ "	26
<input type="checkbox"/>	SMPPS1534UP-	34" x 15" x 1 $\frac{3}{4}$ "	34" x 3 $\frac{9}{16}$ "	31

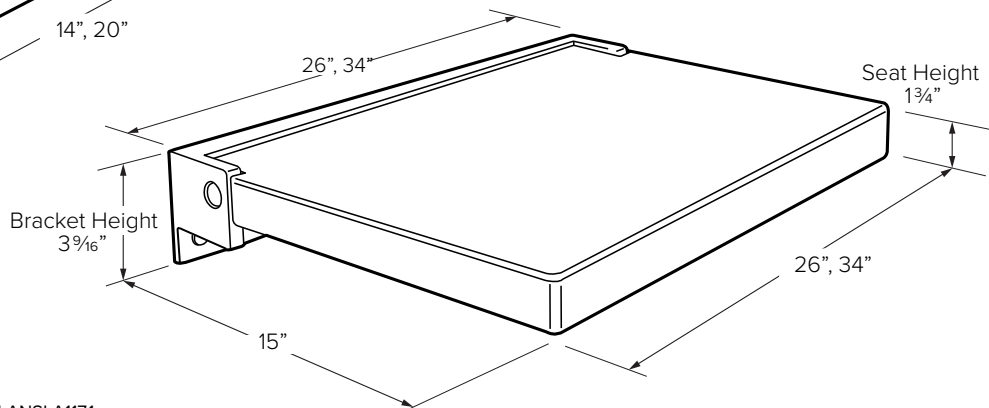
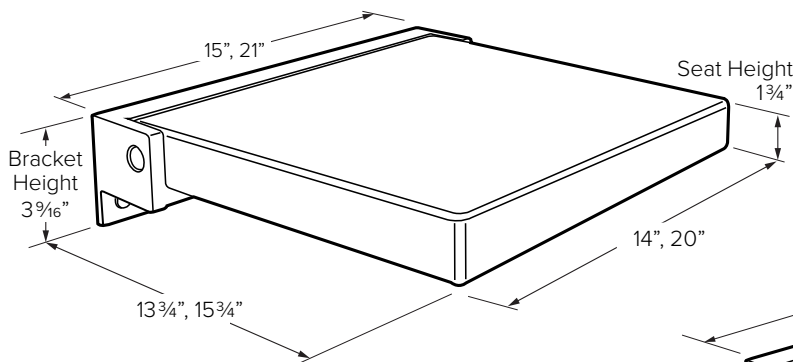
### To Be Specified: Finish

	BRACKET FINISHES	
<input type="checkbox"/>	PC	Polished Chrome
<input type="checkbox"/>	BS	Brushed Stainless
<input type="checkbox"/>	MB	Matte Black
<input type="checkbox"/>	CB	Champagne Bronze

\*SMPPS1414UP- only available in Polished Chrome and Brushed Stainless



**TO ORDER** add finish color after color code (ex. SMPPS1414IP-01PC)



Meets the Americans with Disabilities Act guidelines and ANSI A117.1 requirements for accessible and usable building facilities-check local codes when installed per accessibility guidelines of the act.