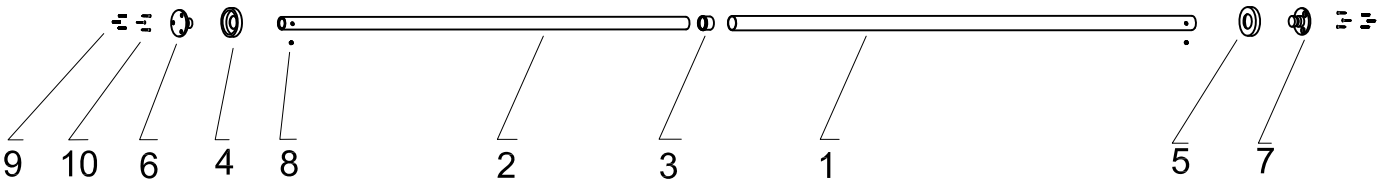


# Telescopic Shower Rod Installation Instructions

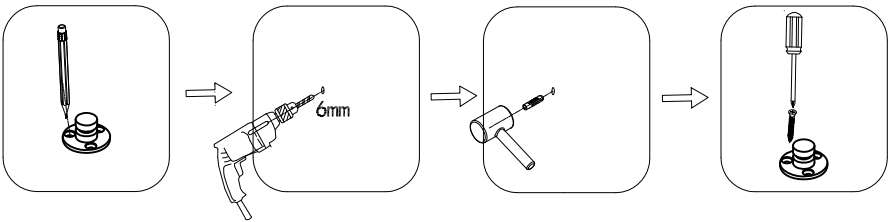
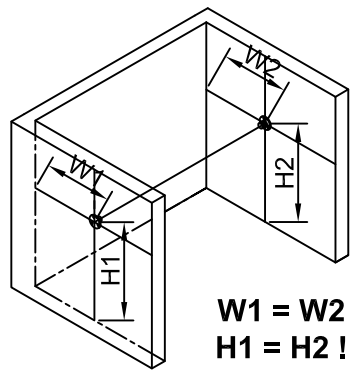


## Parts List

No.	Name	Drawings	Quantity	No.	Name	Drawings	Quantity
1	tube Ø25		1	7	fixing base for Ø25 tube		1
2	tube Ø22		1	8	grub screws		2
3	plastic sleeve		1	9	wall plugs		6
4	cover cap for Ø22 tube		1	10	ST screws		6
5	cover cap for Ø25 tube		1	11	Allen key		1
6	fixing base for Ø22 tube		1				

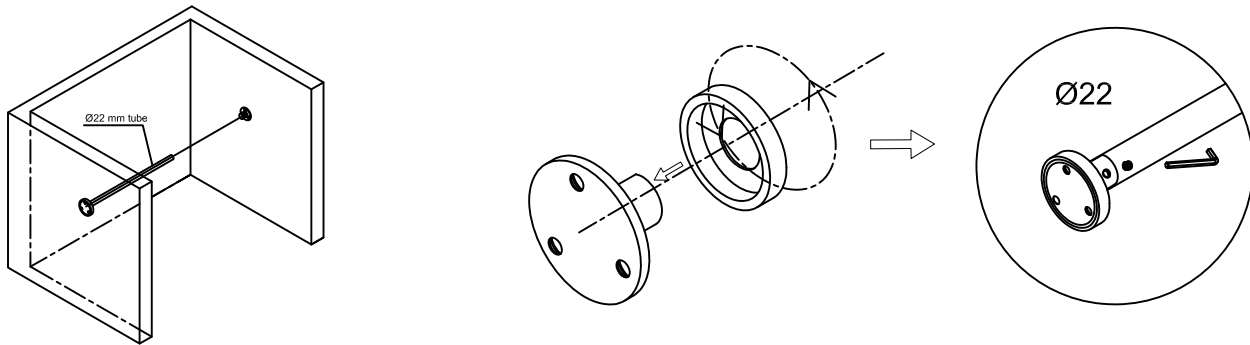
### Step 1: Fix two fixing bases

Make sure the positions of the two fixing bases as the following left drawings shows. Mark holes positions, drill holes, put in wall plugs. Fix two fixing bases to wall.



**Step 2: Fix caps and Ø22 mm tube.**

Screw the caps to the fixing bases respectively at the Ø25 mm tube end and the Ø22 mm tube end. Then insert the Ø22 mm tube into the fixing base. Tighten it with a grub screw.

**Step 3: Fix and tighten 25 mm tube.**

Insert the Ø25 mm tube into the fixing base and tighten with the grub screw.

